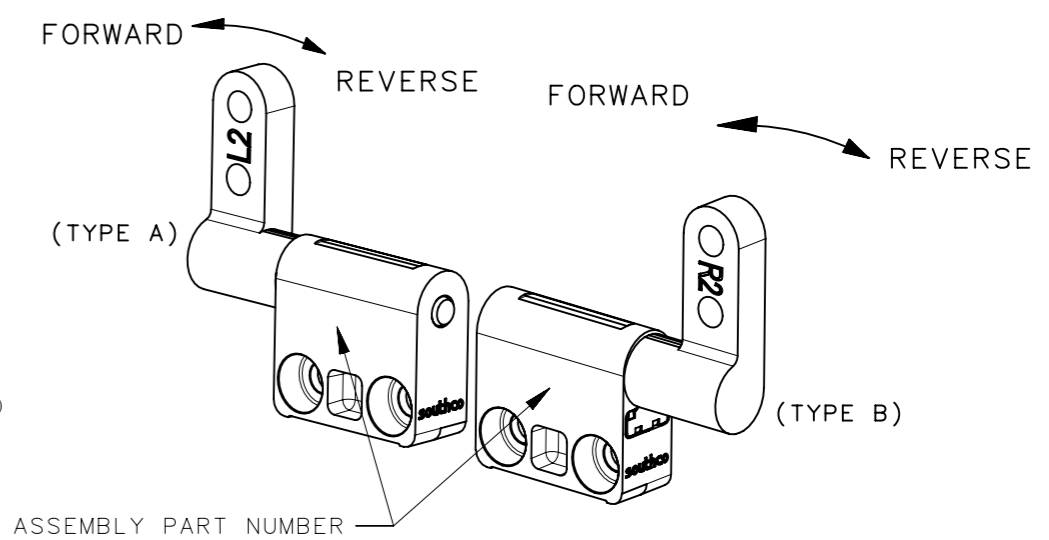
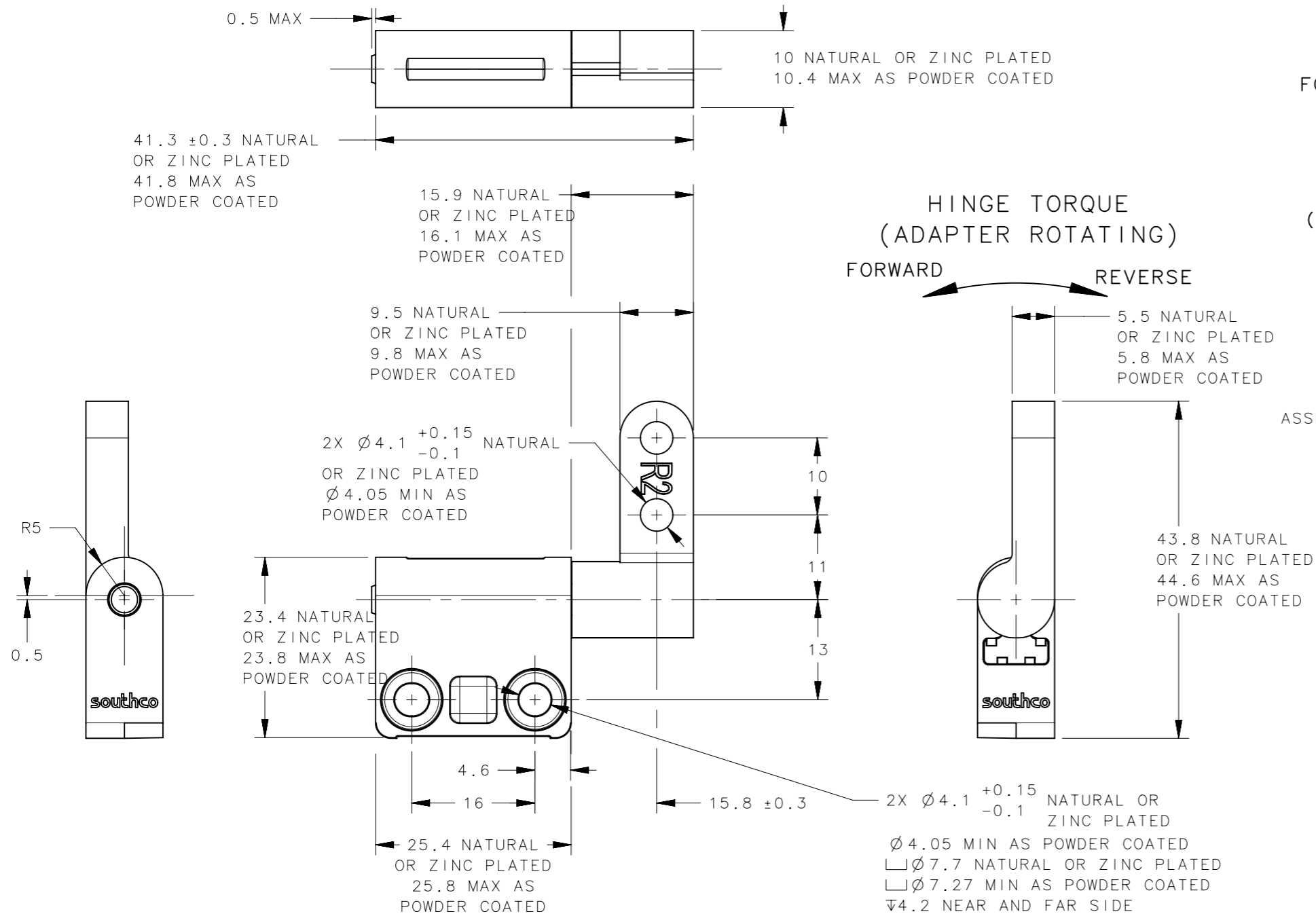


REVISION HISTORY			
REV	DATE	BY	DESCRIPTION
D	22APR2024	GEA/CMS	PRN: P2024-0632



PART NUMBER		STATIC TORQUE +/-20% *	
TYPE A (L2)	TYPE B (R2)	FORWARD TORQUE Lbf-in (N-m)	REARWARD TORQUE lbf-in (N-m)
ST-10A2-35SA-XX	ST-10A2-35SB-XX	3.0 (0.34)	3.0 (0.34)
ST-10A2-70SA-XX	ST-10A2-70SB-XX	6.0 (0.68)	6.0 (0.68)
ST-10A2-100SA-XX	ST-10A2-100SB-XX	9.0 (1.02)	9.0 (1.02)
ST-10A2-135SA-XX	ST-10A2-135SB-XX	12.0 (1.36)	12.0 (1.36)
ST-10A2-170SA-XX	ST-10A2-170SB-XX	15 (1.7)	15 (1.7)
ST-10A2-200SA-XX	ST-10A2-200SB-XX	18 (2.04)	18 (2.04)*
ST-10A2-80FA-XX	ST-10A2-80FB-XX	6.7 (0.76)	5.3 (0.6)*
ST-10A2-95FA-XX	ST-10A2-95FB-XX	8.4 (0.95)	6.6 (0.75)*
ST-10A2-115FA-XX	ST-10A2-115FB-XX	10.1 (1.14)	8.0 (0.9)*
ST-10A2-130FA-XX	ST-10A2-130FB-XX	11.8 (1.33)	9.3 (1.05)*
ST-10A2-150FA-XX	ST-10A2-150FB-XX	13.5 (1.52)	10.6 (1.2)*
ST-10A2-170FA-XX	ST-10A2-170FB-XX	15.1 (1.71)	11.9 (1.35)*
ST-10A2-190FA-XX	ST-10A2-190FB-XX	16.8 (1.9)	13.3 (1.5)*
ST-10A2-210FA-XX	ST-10A2-210FB-XX	18.5 (2.09)	14.6 (1.65)*
ST-10A2-225FA-XX	ST-10A2-225FB-XX	20.2 (2.28)	15.9 (1.8)*
ST-10A2-80RA-XX	ST-10A2-80RB-XX	5.3 (0.6)*	6.7 (0.76)
ST-10A2-95RA-XX	ST-10A2-95RB-XX	6.6 (0.75)*	8.4 (0.95)
ST-10A2-115RA-XX	ST-10A2-115RB-XX	8.0 (0.9)*	10.1 (1.14)
ST-10A2-130RA-XX	ST-10A2-130RB-XX	9.3 (1.05)*	11.8 (1.33)
ST-10A2-150RA-XX	ST-10A2-150RB-XX	10.6 (1.2)*	13.5 (1.52)
ST-10A2-170RA-XX	ST-10A2-170RB-XX	11.9 (1.35)*	15.1 (1.71)
ST-10A2-190RA-XX	ST-10A2-190RB-XX	13.3 (1.5)*	16.8 (1.9)
ST-10A2-210RA-XX	ST-10A2-210RB-XX	14.6 (1.65)*	18.5 (2.09)
ST-10A2-225RA-XX	ST-10A2-225RB-XX	15.9 (1.8)*	20.2 (2.28)

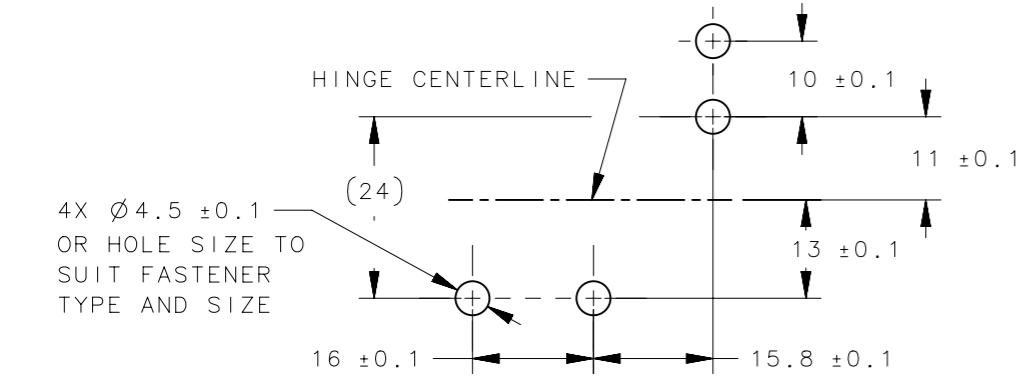
* TOLERANCE IN LOW TORQUE DIRECTION ±30%

PART NUMBER	DESCRIPTION	FINISH
ST-10A2-XXXXY-33	ASSEMBLY - AS CAST	NATURAL
ST-10A2-XXXXY-50	ASSEMBLY - POWDER COATED	BLACK
ST-10A2-XXXXY-53	ASSEMBLY - BLACK ZINC PLATED	BLACK

NOTES:

- MATERIAL AND FINISH:
HOUSING, ADAPTER AND END CAP - ZINC ALLOY, FOR FINISH, SEE TABLE
SHAFT AND TORQUE ELEMENTS - HARDENED STEEL
- INSTALL HINGE USING No.8 OR M4 SOCKET HEAD CAP SCREWS, OR EQUIVALENT, USE LOW PROFILE CAP SCREWS IF SCREW HEAD MUST BE SUBFLUSH.
- FOR PROPER FUNCTION, ASSEMBLY MUST INCLUDE 1 TYPE A AND 1 TYPE B HINGES.
- DIMENSIONS INDICATE AS BUILT CONDITON, LEAF TO LEAF SPACING WILL SELF-ADJUST DURING NORMAL OPERATION.
- PERFORMANCE TORQUE TOLERANCE OVER 30,000 CYCLES.
- TYPE B HINGE SHOWN ABOVE. DIMENSIONS ARE THE SAME BUT MIRRORED FOR TYPE A HINGE.

PANEL PREPARATION



CPB NUMBER 2021-0920	THIRD ANGLE PROJECTION	<p>CONNECT · CREATE · INNOVATE</p>
SURFACE AREA XXXXXmm ²	MILLIMETERS [IN]	
VOLUME XXXXXmm ³	TOLERANCES UNLESS OTHERWISE NOTED	DESCRIPTION HINGE & CONTROLLED MOTION DEVICE ST-10A2-A AND ST-10A2-B HINGE ASSEMBLY
PROPRIETARY ITEM	ALL DIMENSIONS WITHOUT TOLERANCES ARE FOR REFERENCE ONLY.	SIZE A3
EXCEPT FOR USES EXPRESSLY GRANTED IN WRITING, INFORMATION DISCLOSED HEREON IS CONFIDENTIAL AND ALL RIGHTS, PATENT AND OTHERWISE, ARE RESERVED BY SOUTHCO, INC.	PER ASME Y14.5M-2009	SYSTEM NX
		DWG NO. J-ST-10A2-A
		SCALE 1:1
		SHEET 1 OF 1
		DATE 22JUN2023
		DRAWN BY GEA/CMS