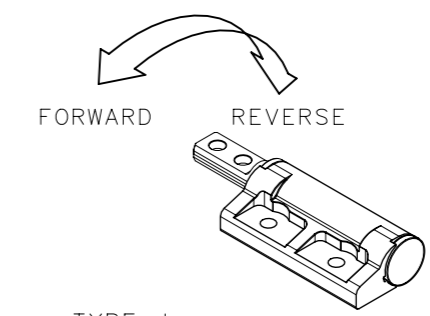
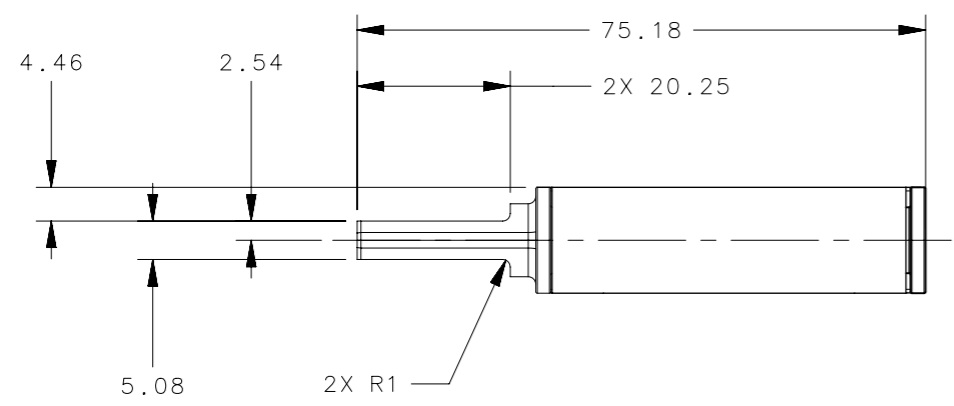
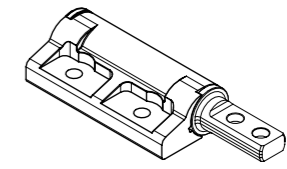


REVISION HISTORY			
REV	DATE	BY	DESCRIPTION
F	03DEC2018	RJV/MJS	PRN: P2018-2771

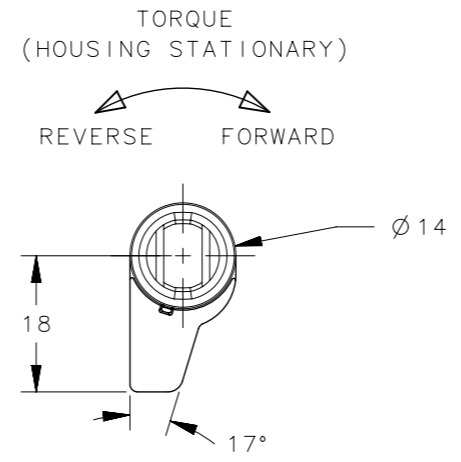


TYPE J
(SHOWN DIMENSIONED)

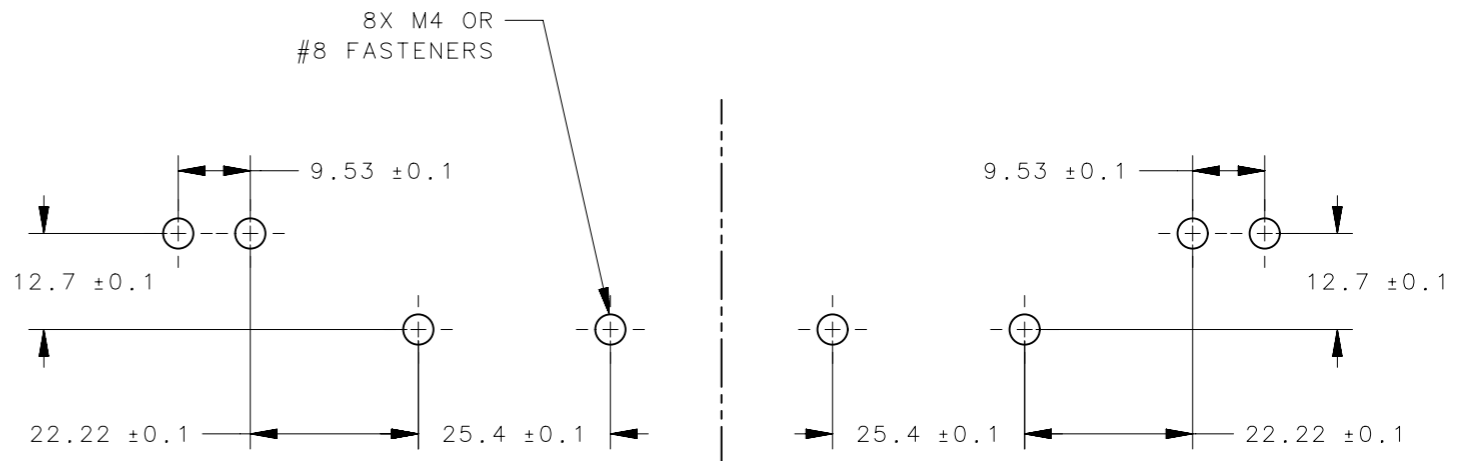


TYPE K

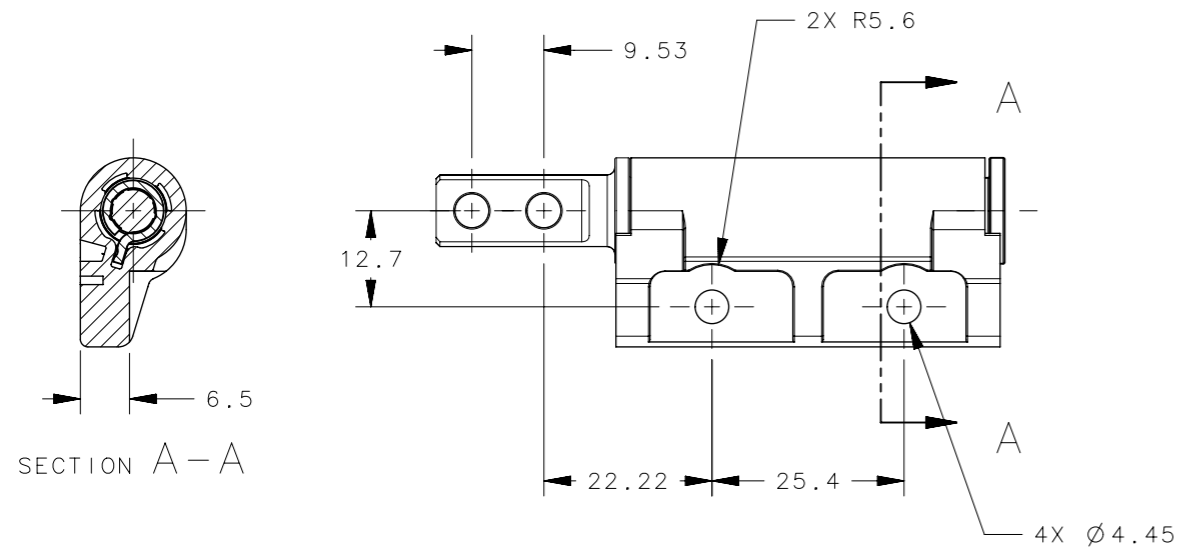
SCALE 1:2



TORQUE
(HOUSING STATIONARY)



PANEL PREPARATION



SECTION A-A

PART NUMBER		STATIC TORQUE	
TYPE J	TYPE K	FORWARD N*m (in-lbf)	REVERSE N*m (in-lbf)
ST-10E-120SJ-XX	ST-10E-120SK-XX	1.35 (12)	1.35 (12)
ST-10E-200SJ-XX	ST-10E-200SK-XX	2.26 (20)	2.26 (20)
ST-10E-280SJ-XX	ST-10E-280SK-XX	3.16 (28)	3.16 (28)
ST-10E-360SJ-XX	ST-10E-360SK-XX	4.06 (36)	4.06 (36)
ST-10E-200FJ-XX	ST-10E-200FK-XX	2.26 (20)	1.35 (12)
ST-10E-280FJ-XX	ST-10E-280FK-XX	3.16 (28)	1.89 (16.8)
ST-10E-360FJ-XX	ST-10E-360FK-XX	4.06 (36)	2.44 (21.6)
ST-10E-440FJ-XX	ST-10E-440FK-XX	4.97 (44)	2.93 (26)
ST-10E-200RJ-XX	ST-10E-200RK-XX	1.35 (12)	2.26 (20)
ST-10E-280RJ-XX	ST-10E-280RK-XX	1.89 (16.8)	3.16 (28)
ST-10E-360RJ-XX	ST-10E-360RK-XX	2.44 (21.6)	4.06 (36)
ST-10E-440RJ-XX	ST-10E-440RK-XX	2.93 (26)	4.97 (44)

TORQUE TOLERANCE ±20%

PART NUMBER	DESCRIPTION	FINISH
ST-10E-XXXXX-33	ASSEMBLY - "AS CAST"	NATURAL
ST-10E-XXXXX-50	ASSEMBLY - "COATED"	BLACK

NOTES:

- MATERIAL AND FINISH:
HOUSING AND END CAP - ZINC ALLOY
SHAFT AND TORQUE ELEMENTS - HARDENED STEEL
- INSTALL USING M4 SCREWS
- FOR PROPER FUNCTION, ASSEMBLY MUST INCLUDE
(1) TYPE "J" HINGE and (1) TYPE "K" HINGE
- DIMENSIONS INDICATE AS-BUILT CONDITION. ADAPTER TO
ADAPTER SPACING WILL SELF ADJUST DURING OPERATION.

THIRD ANGLE PROJECTION	MILLIMETERS [IN]	DESCRIPTION	
		HINGE ASSEMBLY (TYPE J & TYPE K)	
TOLERANCES UNLESS OTHERWISE NOTED		SIZE	SYSTEM
ALL DIMENSIONS WITHOUT TOLERANCES ARE FOR REFERENCE ONLY.		A3	NX
PER ASME Y14.5M-1994		DWG NO.	J-ST-10E-J
PROPRIETARY ITEM EXCEPT FOR USES EXPRESSLY GRANTED IN WRITING, INFORMATION DISCLOSED HEREON IS CONFIDENTIAL AND ALL RIGHTS, PATENT AND OTHERWISE, ARE RESERVED BY SOUTHCO, INC.		DRAWN BY	DATE
		GEA	07APR2008
		SCALE	SHEET
		1:1	1 OF 1