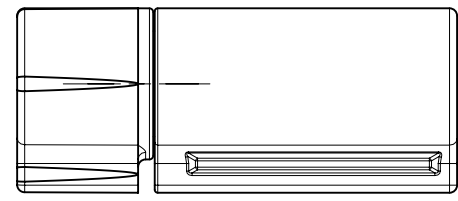
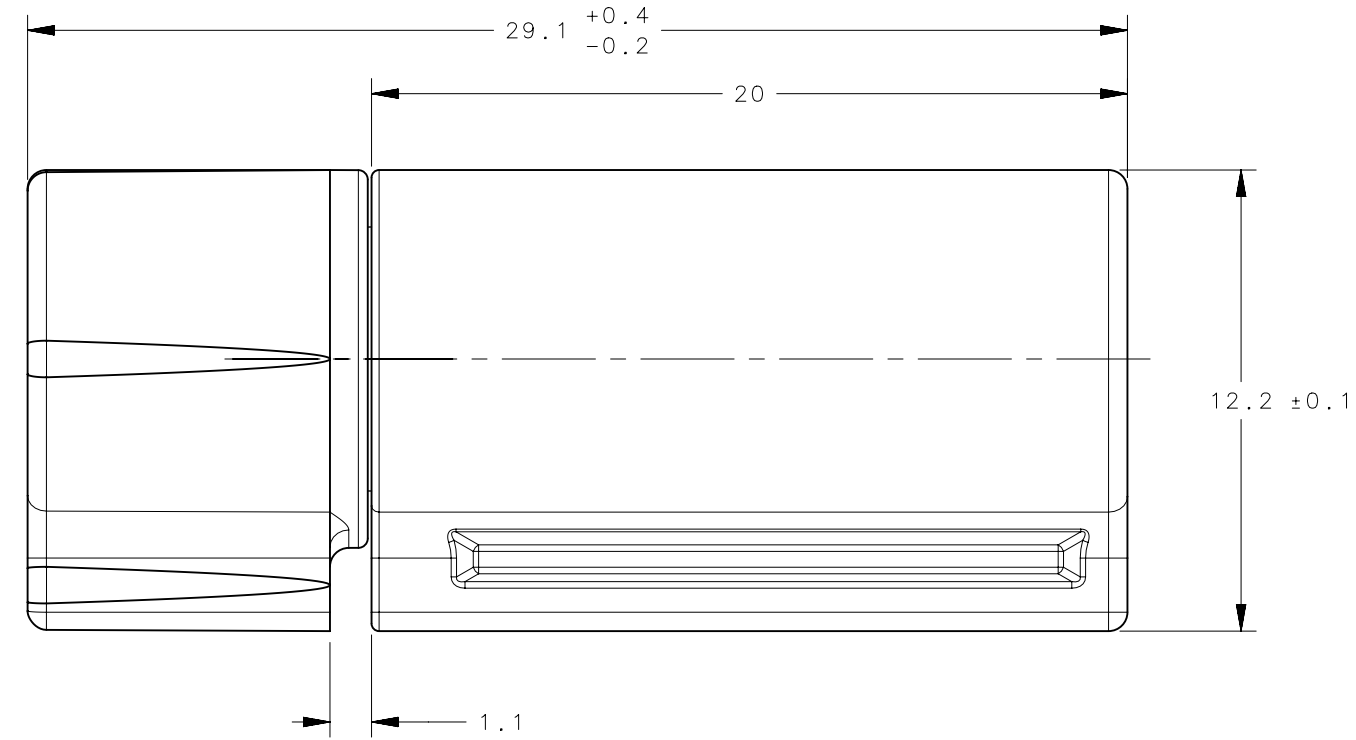
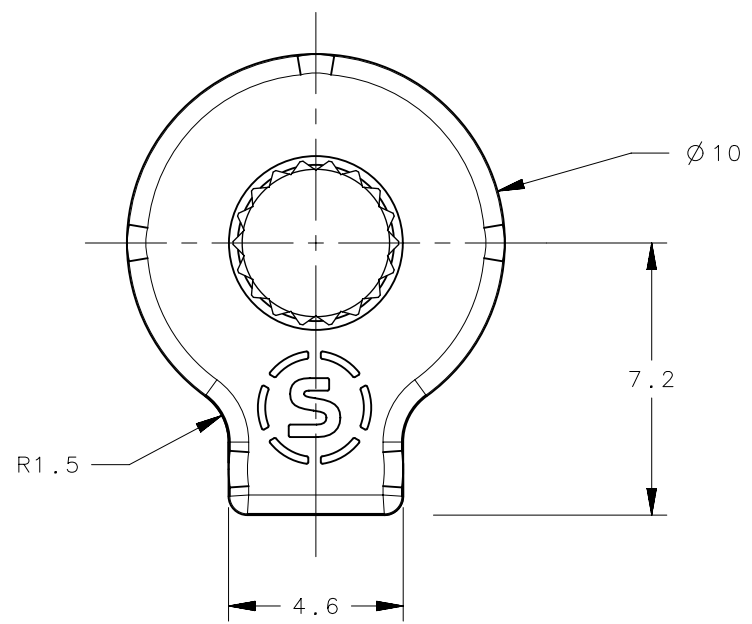
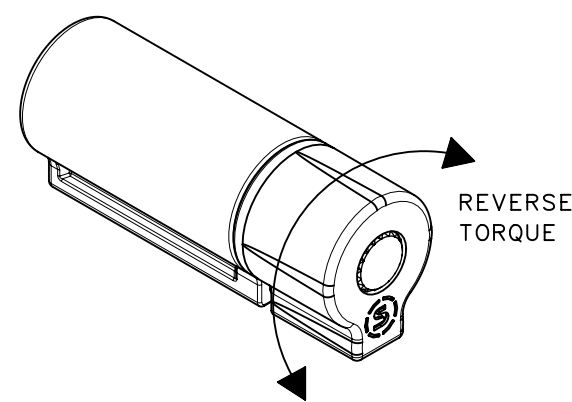


REVISION HISTORY			
REV	DATE	BY	DESCRIPTION
B	25JAN2022	AJD/CDW	PRN: P2022-0261



SCALE 2:1

← DIRECTION OF PRESS
SEE NOTE H



SCALE 2:1

NOTES:

- A. CYCLE LIFE TO BE 20,000 CYCLES WITH LESS THAN 20% TORQUE CHANGE FROM MANUFACTURED VALUE.
- B. MATERIAL:
 - HOUSING: DIE CAST ZINC
 - INTERNAL COMPONENTS: HARDENED STEEL
 - BUSHINGS: PLASTIC
- C. MAX BACKLASH 1° AFTER 20,000 CYCLES
- D. FOR PANEL PREP, SEE PAGE 2
- E. APPLY A 0.25mm x 45° CHAMFER TO INSERTION SIDE OF EDGE OR EACH "RIB"
- F. CARE MUST BE TAKEN TO LIMIT AXIAL MOVEMENT OF HINGE. HINGE ADAPTER MUST NOT BE ROTATED BY HOUSING PANEL PREP, AND HINGE HOUSING MUST NOT BE ROTATED BY ADAPTER PANEL PREP
- G. MAX DEPTH
 - HOUSING: 19.8
 - ADAPTER: 8.8
- H. CUSTOMER TO INSTALL HINGE THROUGH BOTH THE FIXED AND ROTATING MATING COMPONENTS IN A SINGLE OPERATION AT THE SAME TIME.
- I. RoHS COMPLIANT

PART NUMBER	FORWARD TORQUE Nm (in-lbf)	REVERSE TORQUE Nm (in-lbf)
ST-10P-140S-33	1.58 (14)	
ST-10P-100S-33	1.13 (10)	
ST-10P-080S-33	0.90 (8)	
ST-10P-040S-33	0.45 (4)	
ST-10P-200F-33	2.26 (20)	1.58 (14) REF
ST-10P-160F-33	1.81 (16)	1.27 (11.2) REF
ST-10P-120F-33	1.36 (12)	0.95 (8.4) REF
ST-10P-080F-33	0.90 (8)	0.63 (5.6) REF
ST-10P-040F-33	0.45 (4)	0.32 (2.8) REF
ST-10P-200R-33	1.58 (14) REF	2.26 (20)
ST-10P-160R-33	1.27 (11.2) REF	1.81 (16)
ST-10P-120R-33	0.95 (8.4) REF	1.36 (12)
ST-10P-080R-33	0.63 (5.6) REF	0.90 (8)
ST-10P-040R-33	0.32 (2.8) REF	0.45 (4)

THIRD ANGLE PROJECTION				
MILLIMETERS [IN]				
TOLERANCES UNLESS OTHERWISE NOTED	DESCRIPTION			
ALL DIMENSIONS WITHOUT TOLERANCES ARE FOR REFERENCE ONLY.	HINGE & CONTROLLED MOTION DEVICE PRESS-IN HINGE, CONSTANT TORQUE			
PROPRIETARY ITEM <small>EXCEPT FOR USES EXPRESSLY GRANTED IN WRITING, INFORMATION DISCLOSED HEREON IS CONFIDENTIAL AND ALL RIGHTS, PATENT AND OTHERWISE, ARE RESERVED BY SOUTHCO, INC.</small>	SIZE B	SYSTEM NX	DWG NO. J-ST-10P-200	
PER ASME Y14.5M-1994	DRAWN BY JJT	DATE 03FEB2020	SCALE 5:1	SHEET 1 OF 2

6

5

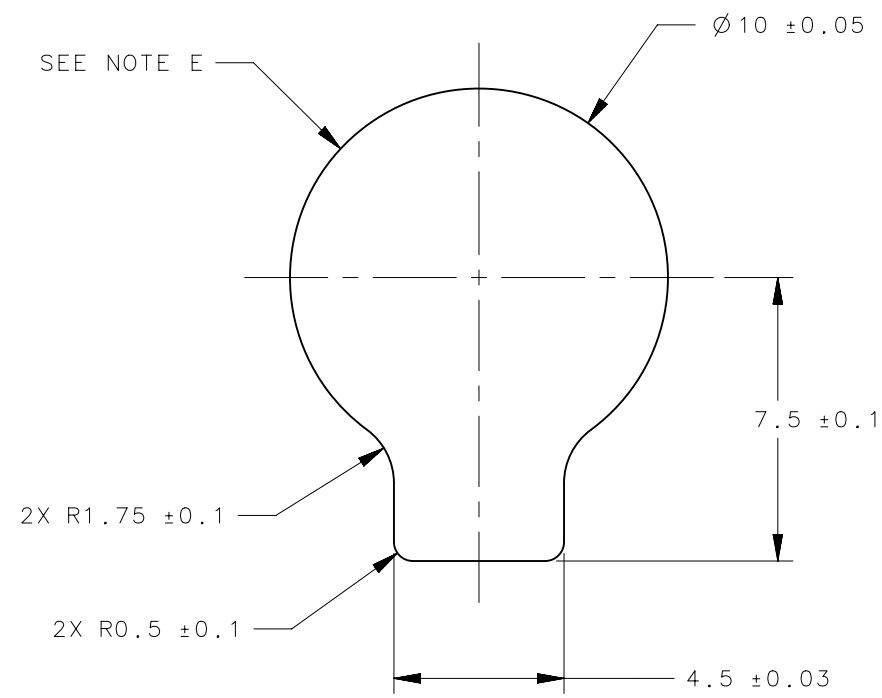
4

3

2

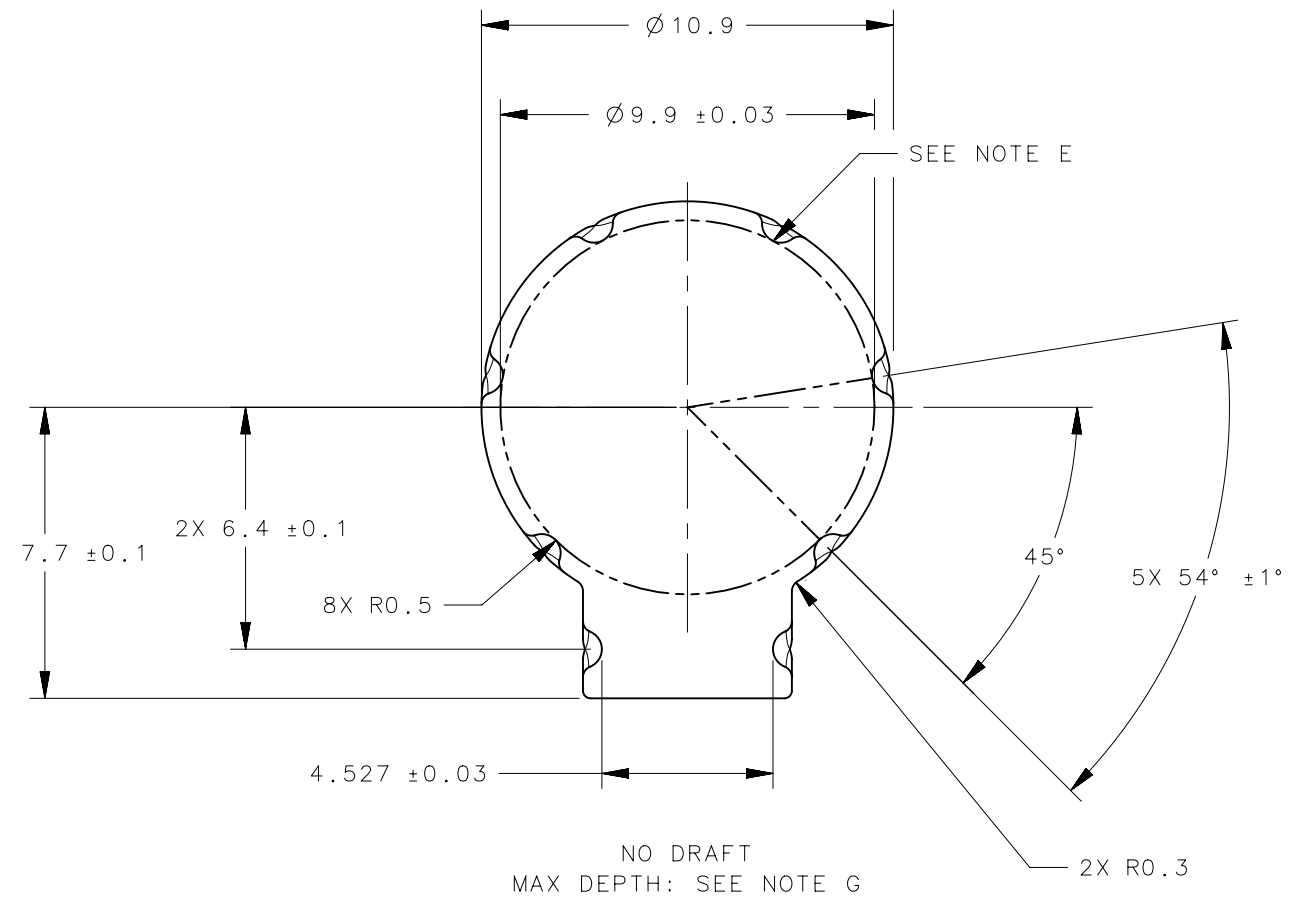
1

REVISION HISTORY			
REV	DATE	BY	DESCRIPTION
B	25JAN2022	AJD/CDW	PRN: P2022-0261



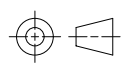

MAX DEPTH: SEE NOTE G

PANEL PREPARATION (POLYMERS)



NO DRAFT
MAX DEPTH: SEE NOTE G

PANEL PREPARATION (METALS)

PROPRIETARY ITEM <small>EXCEPT FOR USES EXPRESSLY GRANTED IN WRITING, INFORMATION DISCLOSED HEREON IS CONFIDENTIAL AND ALL RIGHTS, PATENT AND OTHERWISE, ARE RESERVED BY SOUTHCO, INC.</small>	THIRD ANGLE PROJECTION 	 CONNECT · CREATE · INNOVATE			
	MILLIMETERS [IN]				
	TOLERANCES UNLESS OTHERWISE NOTED	DESCRIPTION	SIZE	SYSTEM	DWG NO.
	ALL DIMENSIONS WITHOUT TOLERANCES ARE FOR REFERENCE ONLY.	HINGE & CONTROLLED MOTION DEVICE PRESS-IN HINGE, CONSTANT TORQUE	B	NX	J-ST-10P-200
PER ASME Y14.5M-1994	DRAWN BY	DATE	SCALE	SHEET	
	JJT	03FEB2020	5:1	2 OF 2	

6

5

4

3

2

1