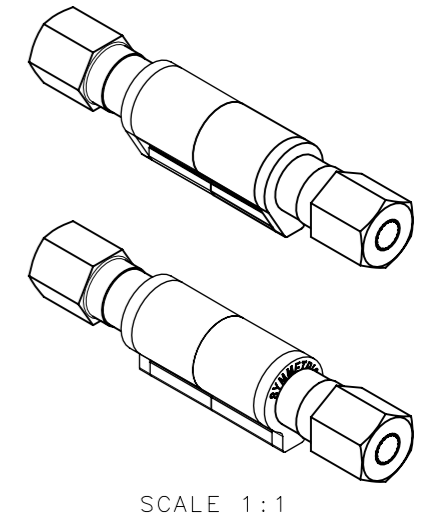
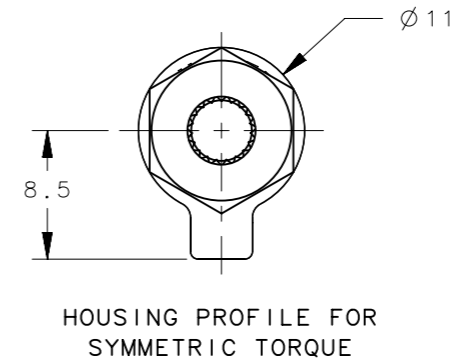
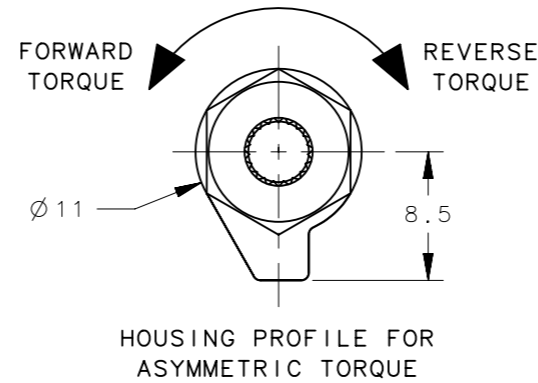
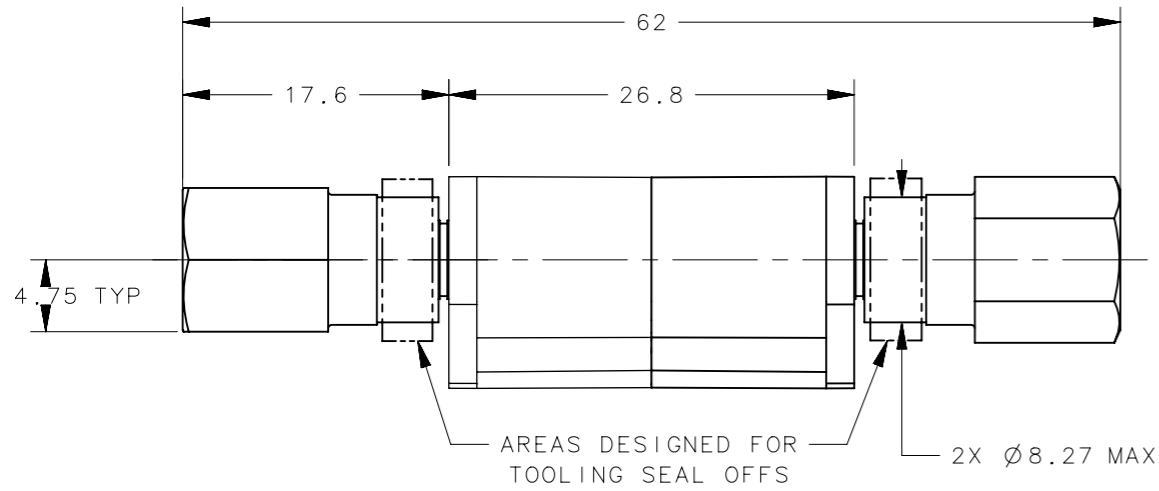


HEX SHAFT STYLE

REVISION HISTORY			
REV	DATE	BY	DESCRIPTION
A	27JUN2024	TMP/AJH	PRN: P2024-1125



NOTES:

- CYCLE LIFE TO BE 20,000 CYCLES WITH LESS THAN 20% TORQUE CHANGE FROM MANUFACTURED VALUE
- PERFORMANCE TORQUE TOLERANCE: ±20%
- MATERIAL:
 - HOUSING: DIE CAST ZINC
 - INTERNAL COMPONENTS: HARDENED STEEL
 - BUSHINGS: ALUMINUM
- HINGES ARE DESIGNED TO BE INSERT MOLDED INTO A POLYMER BASE. PRESS-IN INSTALLATION IS NOT RECOMMENDED.

PART NUMBER	HOUSING PROFILE	FORWARD TORQUE Nm (in-lbf)	REVERSE TORQUE Nm (in-lbf)
ST-11P2-350SA-33	SYMM	3.95 (35)	
ST-11P2-300SA1-33	SYMM	3.39 (30)	
ST-11P2-250SA1-33	SYMM	2.82 (25)	
ST-11P2-200SA1-33	SYMM	2.26 (20)	
ST-11P2-150SA1-33	SYMM	1.69 (15)	
ST-11P2-400FA-33	ASYMM	4.52 (40)	3.16 (28)
ST-11P2-350FA-33	ASYMM	3.95 (35)	2.77 (24.5)
ST-11P2-300FA1-33	ASYMM	3.39 (30)	2.37 (21)
ST-11P2-250FA1-33	ASYMM	2.82 (25)	1.98 (17.5)
ST-11P2-200FA1-33	ASYMM	2.26 (20)	1.58 (14)
ST-11P2-150FA1-33	ASYMM	1.69 (15)	1.19 (10.5)
ST-11P2-400RA-33	ASYMM	3.16 (28)	4.52 (40)
ST-11P2-350RA-33	ASYMM	2.77 (24.5)	3.95 (35)
ST-11P2-300RA1-33	ASYMM	2.37 (21)	3.39 (30)
ST-11P2-250RA1-33	ASYMM	1.98 (17.5)	2.82 (25)
ST-11P2-200RA1-33	ASYMM	1.58 (14)	2.26 (20)
ST-11P2-150RA1-33	ASYMM	1.19 (10.5)	1.69 (15)

THIRD ANGLE PROJECTION	 CONNECT · CREATE · INNOVATE
MILLIMETERS [IN]	
TOLERANCES UNLESS OTHERWISE NOTED	DESCRIPTION HINGE & CONTROLLED MOTION DEVICE HEX SHAFT
ALL DIMENSIONS WITHOUT TOLERANCES ARE FOR REFERENCE ONLY.	SIZE A3 SYSTEM NX DWG NO. J-ST-11P2-1
PER ASME Y14.5M-2009	DRAWN BY TMP/AJH DATE 26JUN2024 SCALE 2:1 SHEET 1 OF 1

PROPRIETARY ITEM
EXCEPT FOR USES EXPRESSLY GRANTED IN WRITING, INFORMATION DISCLOSED HEREON IS CONFIDENTIAL AND ALL RIGHTS, PATENT AND OTHERWISE, ARE RESERVED BY SOUTHCO, INC.