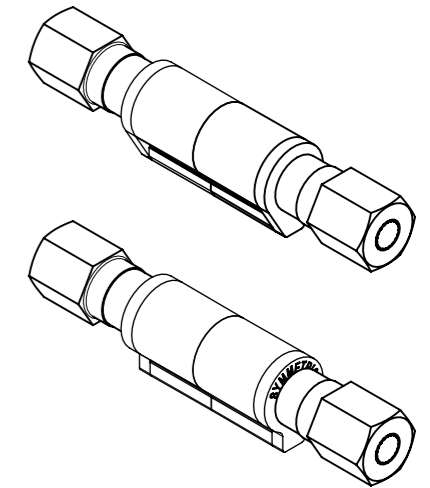
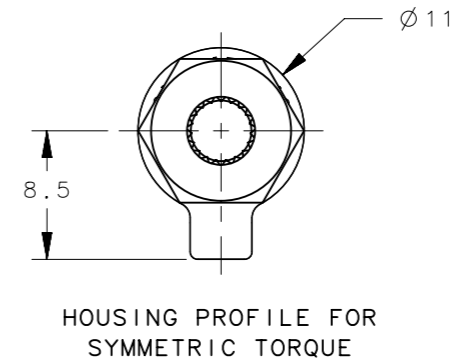
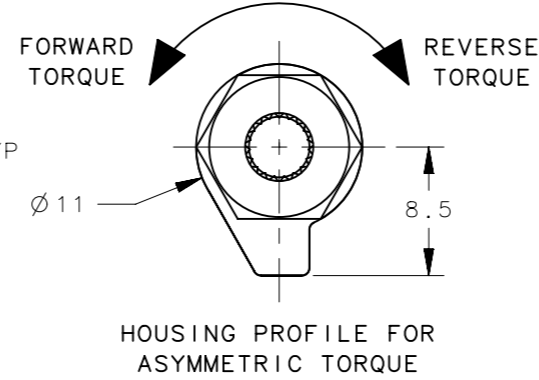
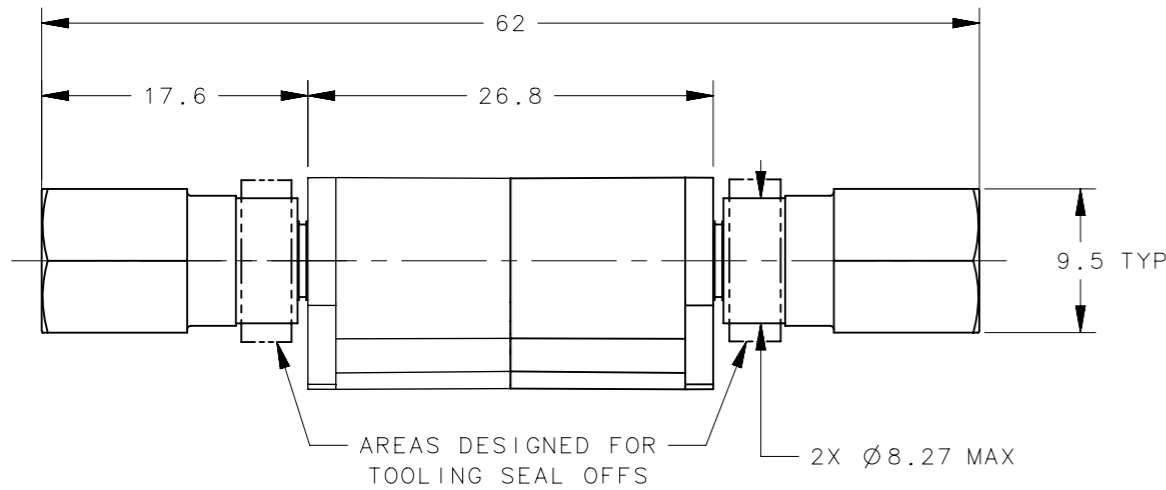
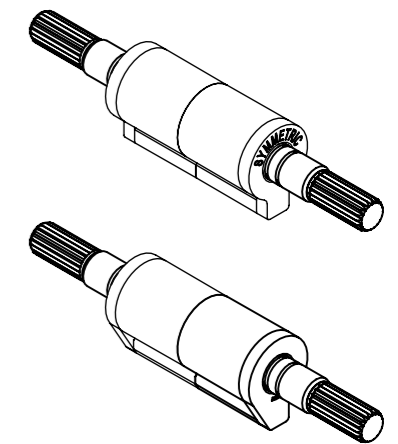
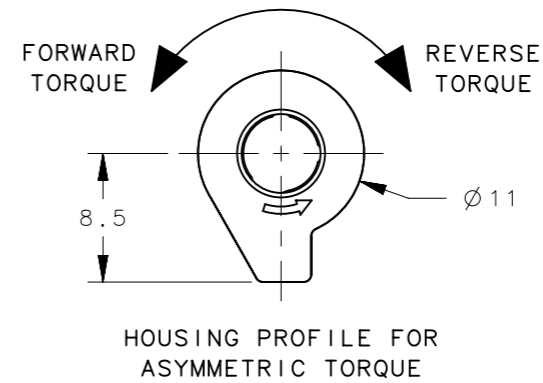
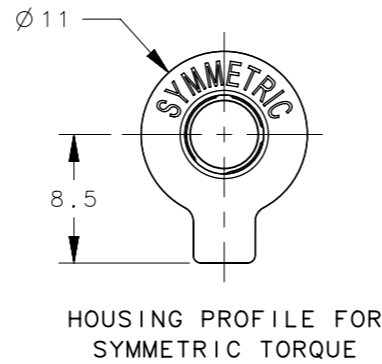
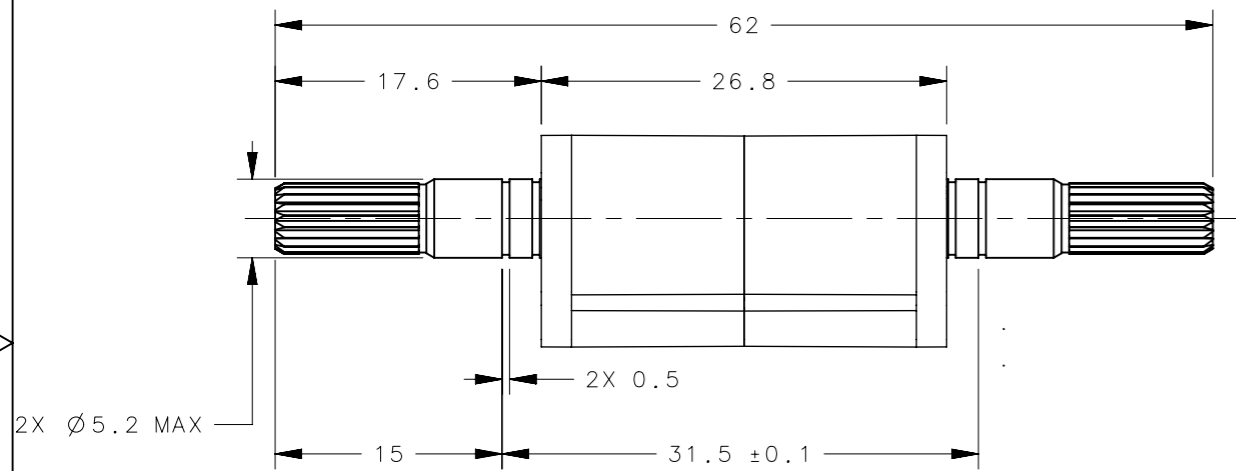


HEX SHAFT STYLE



SCALE 1:1

KNURLED SHAFT STYLE



SCALE 1:1

NOTES:

- CYCLE LIFE TO BE 20,000 CYCLES WITH LESS THAN 20% TORQUE CHANGE FROM MANUFACTURED VALUE
- PERFORMANCE TORQUE TOLERANCE: ±20%
- MATERIAL:
 - HOUSING: DIE CAST ZINC
 - INTERNAL COMPONENTS: HARDENED STEEL
 - BUSHINGS: ALUMINUM
- HINGES ARE DESIGNED TO BE INSERT MOLDED INTO A POLYMER BASE. PRESS-IN INSTALLATION IS NOT RECOMMENDED.

| REVISION HISTORY | | | |
|------------------|-----------|---------|-----------------|
| REV | DATE | BY | DESCRIPTION |
| I | 11JUN2019 | JJT/MJS | PRN: P2019-1493 |

| PART NUMBER | SHAFT STYLE | HOUSING PROFILE | FORWARD TORQUE Nm (in-lbf) | REVERSE TORQUE Nm (in-lbf) |
|------------------|-------------|-----------------|----------------------------|----------------------------|
| ST-11P2-350SA-33 | HEX | SYMM | 3.95 (35) | |
| ST-11P2-300SA-33 | KNURL | SYMM | 3.39 (30) | |
| ST-11P2-250SA-33 | KNURL | SYMM | 2.82 (25) | |
| ST-11P2-200SA-33 | KNURL | SYMM | 2.26 (20) | |
| ST-11P2-150SA-33 | KNURL | SYMM | 1.69 (15) | |
| ST-11P2-400FA-33 | HEX | ASYMM | 4.52 (40) | 3.16 (28) |
| ST-11P2-350FA-33 | HEX | ASYMM | 3.95 (35) | 2.77 (24.5) |
| ST-11P2-300FA-33 | KNURL | ASYMM | 3.39 (30) | 2.37 (21) |
| ST-11P2-250FA-33 | KNURL | ASYMM | 2.82 (25) | 1.98 (17.5) |
| ST-11P2-200FA-33 | KNURL | ASYMM | 2.26 (20) | 1.58 (14) |
| ST-11P2-150FA-33 | KNURL | ASYMM | 1.69 (15) | 1.19 (10.5) |
| ST-11P2-400RA-33 | HEX | ASYMM | 3.16 (28) | 4.52 (40) |
| ST-11P2-350RA-33 | HEX | ASYMM | 2.77 (24.5) | 3.95 (35) |
| ST-11P2-300RA-33 | KNURL | ASYMM | 2.37 (21) | 3.39 (30) |
| ST-11P2-250RA-33 | KNURL | ASYMM | 1.98 (17.5) | 2.82 (25) |
| ST-11P2-200RA-33 | KNURL | ASYMM | 1.58 (14) | 2.26 (20) |
| ST-11P2-150RA-33 | KNURL | ASYMM | 1.19 (10.5) | 1.69 (15) |

| | | | | |
|---|----------------------|-----------------------------------|-------------------|----------------------|
| THIRD ANGLE PROJECTION | MILLIMETERS [IN] | TOLERANCES UNLESS OTHERWISE NOTED | | |
| | | | | |
| PROPRIETARY ITEM <small>EXCEPT FOR USES EXPRESSLY GRANTED IN WRITING, INFORMATION DISCLOSED HEREON IS CONFIDENTIAL AND ALL RIGHTS, PATENT AND OTHERWISE, ARE RESERVED BY SOUTHCO, INC.</small> | PER ASME Y14.5M-1994 | SIZE A3 | SYSTEM NX | DWG NO. J-ST-11P2 |
| | | DRAWN BY CMS/TS | DATE 15DEC2016 | SCALE 2:1 |
| | | | | SHEET 1 OF 1 |