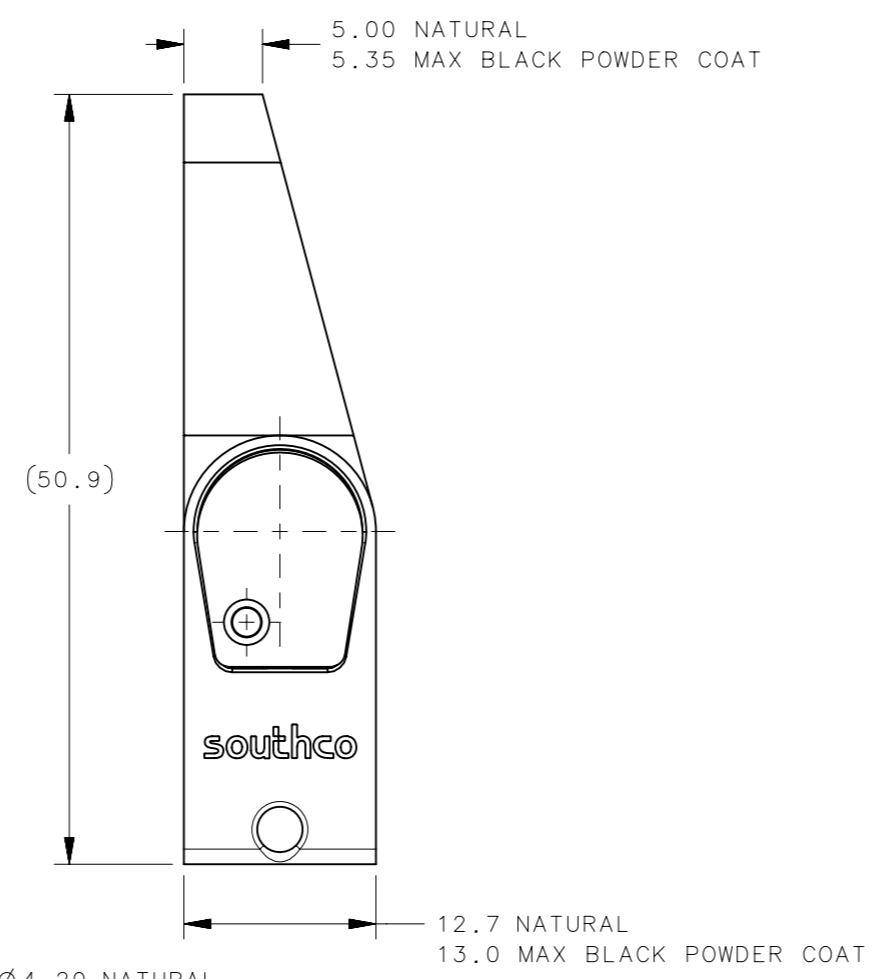
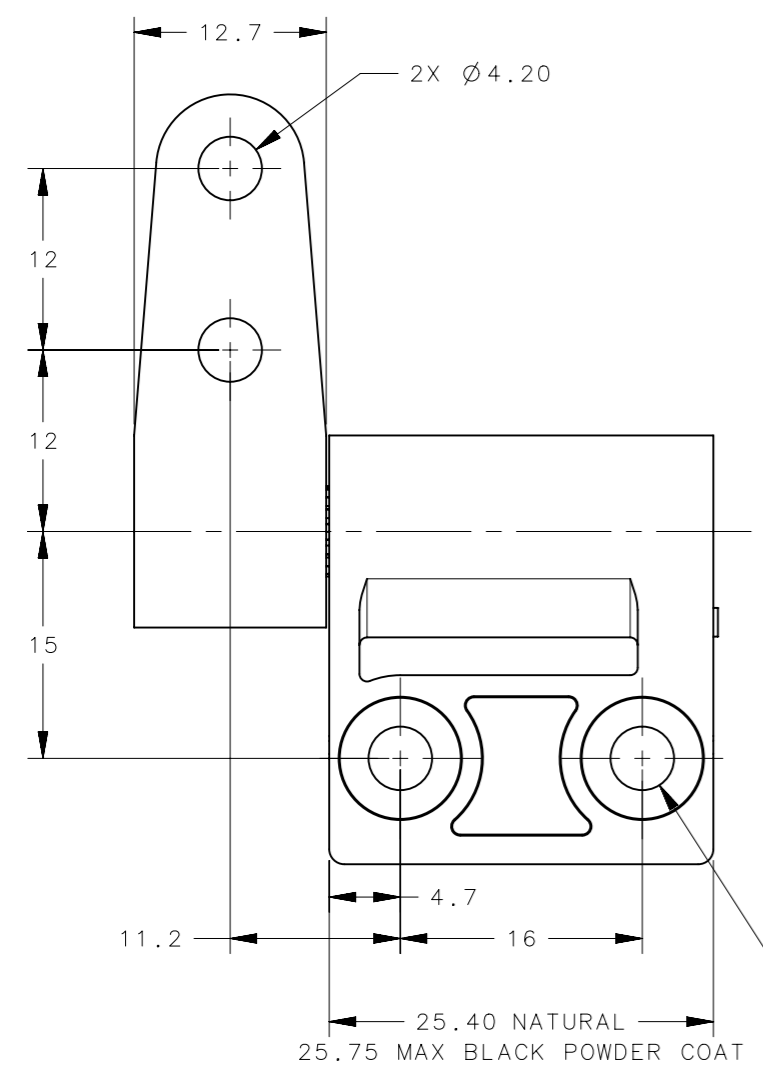
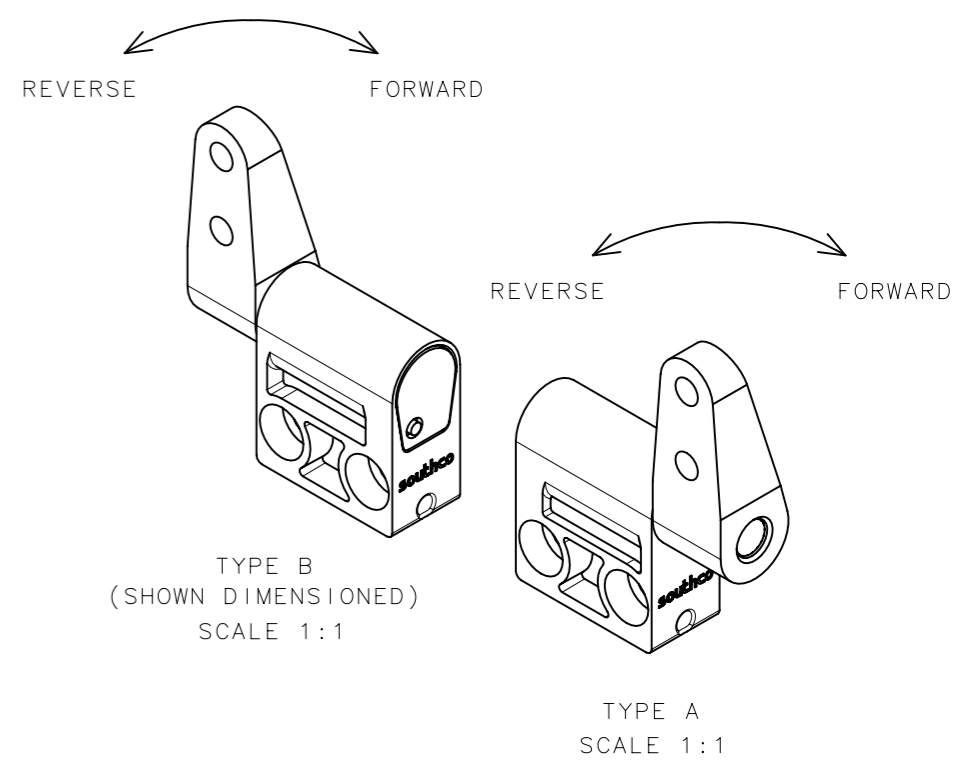
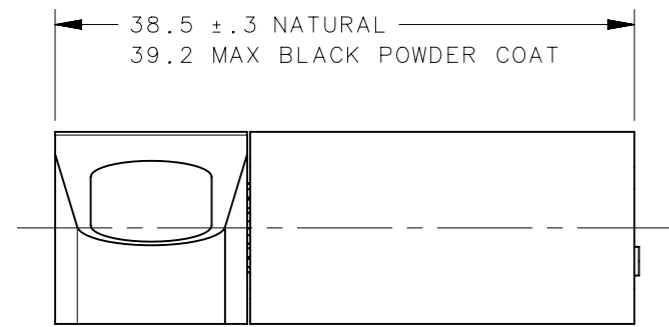


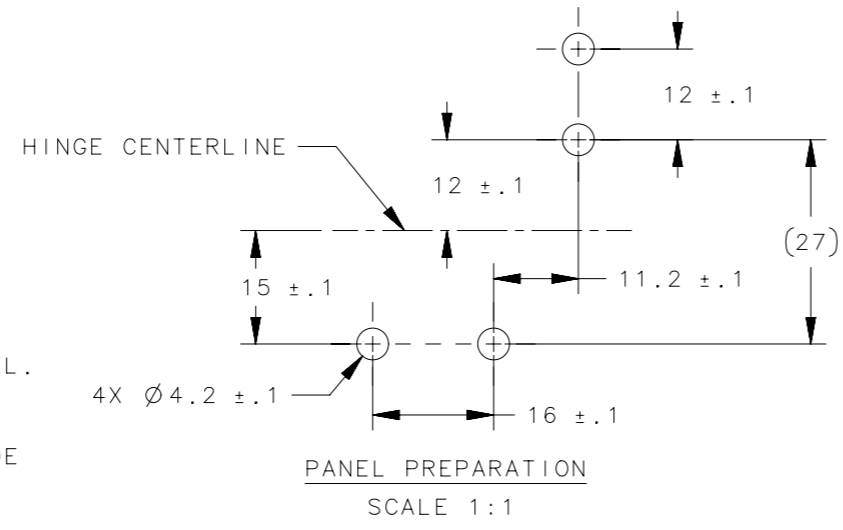
REVISION HISTORY			
REV	DATE	BY	DESCRIPTION
G	27OCT2012	DMS/YGC	PRN: P2012-1473



PART NUMBER		STATIC TORQUE	
TYPE A	TYPE B	FORWARD (in-lbf)	REVERSE (in-lbf)
ST-12A-120SA-XX	ST-12A-120SB-XX	12	12
ST-12A-200SA-XX	ST-12A-200SB-XX	20	20
ST-12A-280SA-XX	ST-12A-280SB-XX	28	28
ST-12A-360SA-XX	ST-12A-360SB-XX	36	36
ST-12A-200FA-XX	ST-12A-200FB-XX	20	13.6
ST-12A-280FA-XX	ST-12A-280FB-XX	28	19.1
ST-12A-360FA-XX	ST-12A-360FB-XX	36	24.6
ST-12A-440FA-XX	ST-12A-440FB-XX	44	30
ST-12A-200RA-XX	ST-12A-200RB-XX	13.6	20
ST-12A-280RA-XX	ST-12A-280RB-XX	19.1	28
ST-12A-360RA-XX	ST-12A-360RB-XX	24.6	36
ST-12A-440RA-XX	ST-12A-440RB-XX	30	44

PART NUMBER	DESCRIPTION	FINISH
ST-12A-XXXXX-33	ASSEMBLY-AS CAST	NATURAL
ST-12A-XXXXX-10	ASSEMBLY-COATED	WHITE POWDER COAT
ST-12A-XXXXX-50	ASSEMBLY-COATED	BLACK POWDER COAT

- NOTES:
- MATERIAL & FINISH:
HOUSING AND ADAPTER - ZINC ALLOY,
FOR FINISH SEE TABLE.
SHAFT AND TORQUE ELEMENTS - HARDENED STEEL.
 - INSTALL HINGE USING A NO.8 OR M4
SOCKET HEAD CAP SCREW.
 - FOR PROPER FUNCTION, ASSEMBLY MUST INCLUDE
(1) TYPE "A" & (1) TYPE "B" HINGE.



SURFACE AREA	THIRD ANGLE PROJECTION	 CONNECT · CREATE · INNOVATE	
	VOLUME		
PROPRIETARY ITEM	TOLERANCES UNLESS OTHERWISE NOTED	DESCRIPTION ST-12A HINGE ASSEMBLY	
EXCEPT FOR USES EXPRESSLY GRANTED IN WRITING, INFORMATION DISCLOSED HEREON IS CONFIDENTIAL AND ALL RIGHTS, PATENT AND OTHERWISE, ARE RESERVED BY SOUTHCO, INC.	ALL DIMENSIONS WITHOUT TOLERANCES ARE FOR REFERENCE ONLY.	SIZE A3	SYSTEM NX
PER ASME Y14.5M-1994	DRAWN BY AS/JM	DATE 10FEB2006	DWG NO. J-ST-12A
		SCALE 2:1	SHEET 1 OF 1