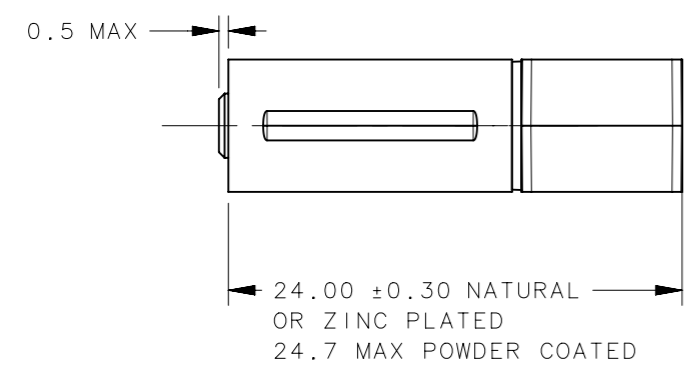
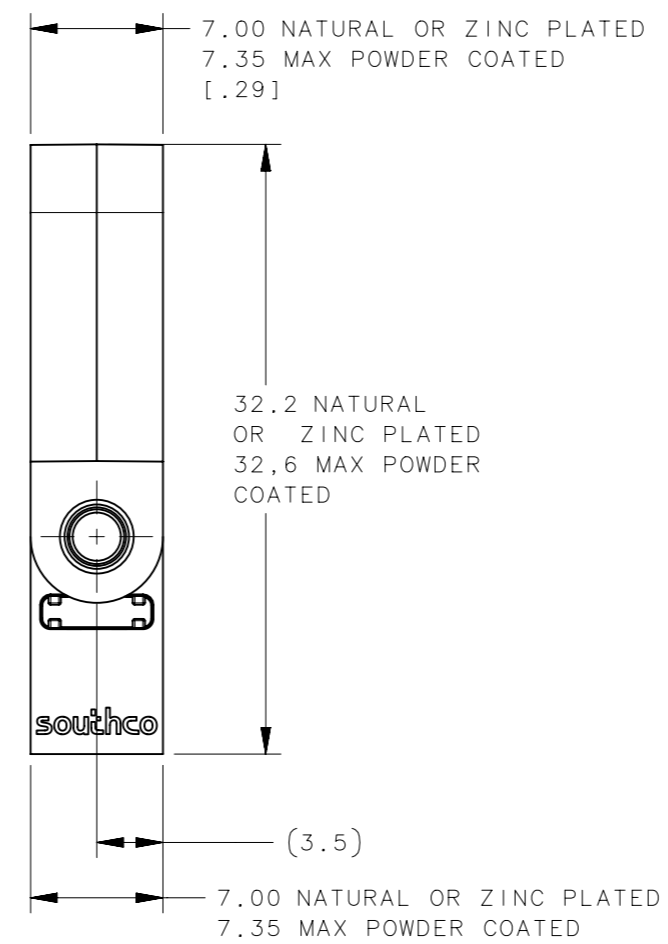
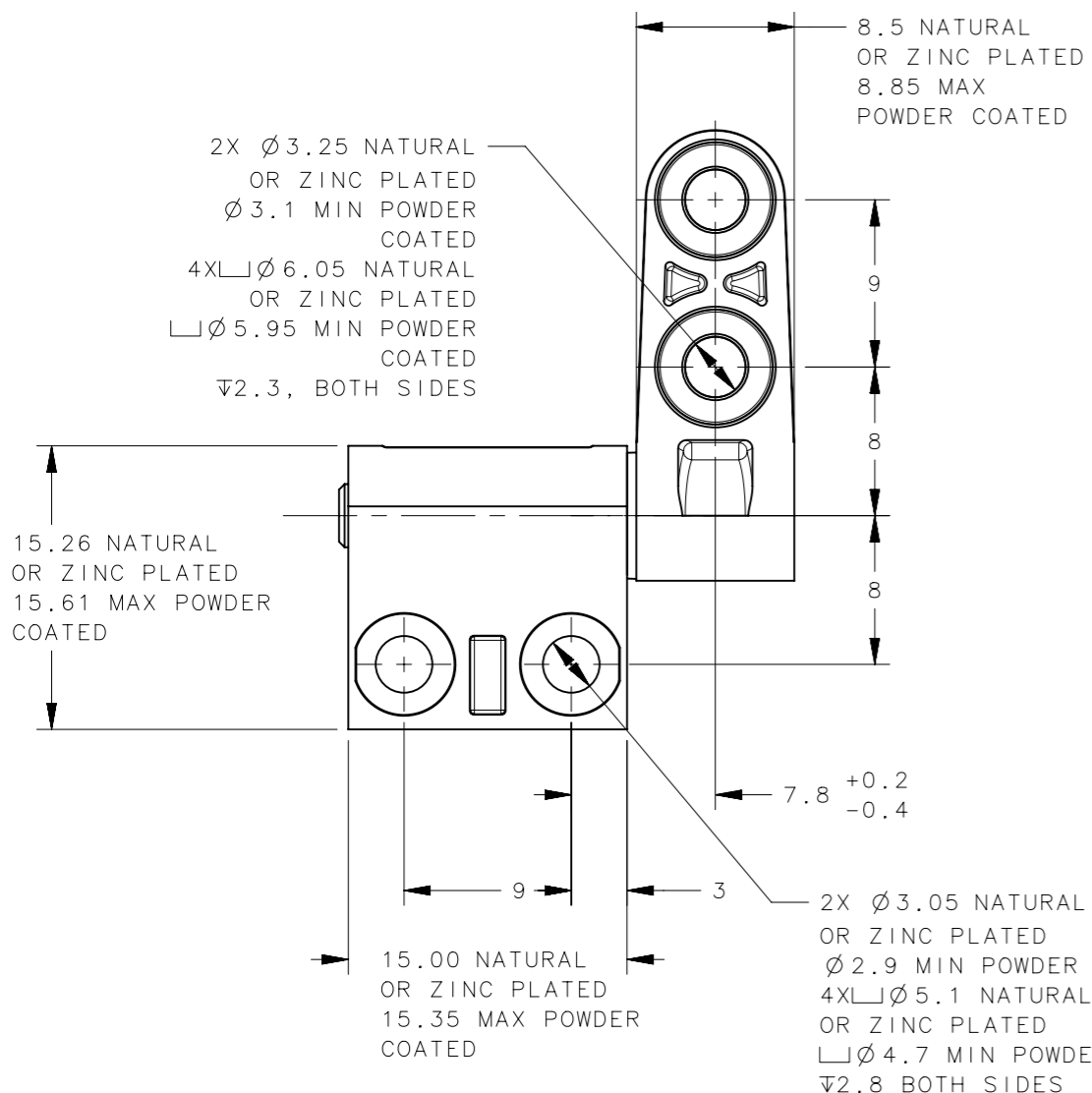
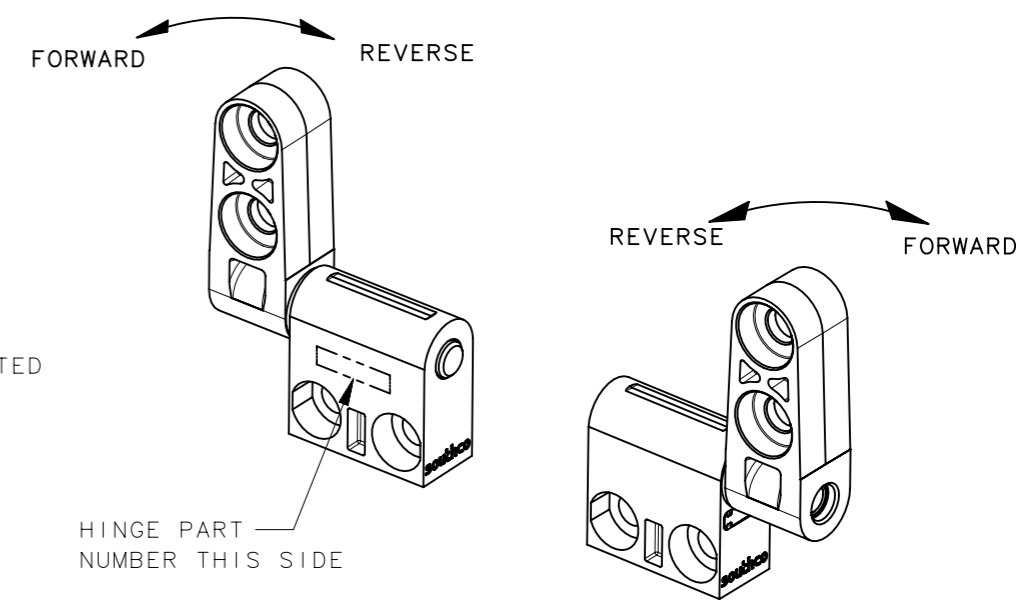


REVISION HISTORY			
REV	DATE	BY	DESCRIPTION
D	23APR2024	GEA/CMS	PRN: P2024-0612



HINGE TORQUE
(ADAPTER ROTATING)

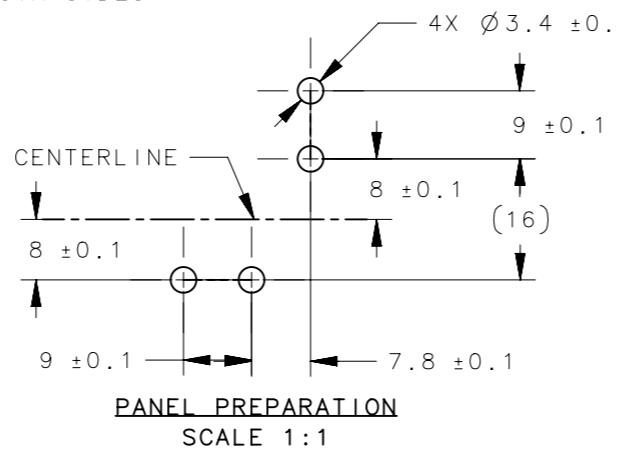
REVERSE ← → FORWARD



PART NUMBER	STATIC TORQUE +/-20%	
	FORWARD lbf*in (N*m)	REARWARD lbf*in (N*m)
ST-7A2-15ST-XX	1.5 (0.17)	1.5 (0.17)
ST-7A2-30ST-XX	3 (0.34)	3 (0.34)
ST-7A2-45ST-XX	4.5 (0.51)	4.5 (0.51)
ST-7A2-60ST-XX	6 (0.68)	6 (0.68)
ST-7A2-75ST-XX	7.5 (0.85)	7.5 (0.85)
ST-7A2-90ST-XX	9 (1.0)	9 (1.0)
ST-7A2-25FT-XX	2.5 (0.28)	2 (0.23)*
ST-7A2-40FT-XX	4 (0.45)	3.2 (0.36)*
ST-7A2-50FT-XX	5 (0.56)	4 (0.45)*
ST-7A2-60FT-XX	6 (0.68)	4.6 (0.52)*
ST-7A2-80FT-XX	8 (0.9)	6 (0.68)*
ST-7A2-90FT-XX	9 (1.02)	6.6 (0.75)*
ST-7A2-25RT-XX	2 (0.23)*	2.5 (0.28)
ST-7A2-40RT-XX	3.2 (0.36)*	4 (0.45)
ST-7A2-50RT-XX	4 (0.45)*	5 (0.56)
ST-7A2-60RT-XX	4.6 (0.52)*	6 (0.68)
ST-7A2-80RT-XX	6 (0.68)*	8 (0.9)
ST-7A2-90RT-XX	6.6 (0.75)*	9 (1.02)

* INDICATES LOW TORQUE DIRECTION ± 30% TOLERANCE

- NOTES:
- MATERIAL AND FINISH:
HOUSING, ADAPTER AND END CAP - ZINC ALLOY, FOR FINISH, SEE TABLE
SHAFT AND TORQUE ELEMENTS - HARDENED STEEL
 - INSTALL HINGE HOUSING USING No. 4 SOCKET HEAD CAP SCREWS. INSTALL HINGE ADAPTER USING M3, No. 4 or No.5 SOCKET HEAD CAP SCREWS, OR EQUIVELANT, USE LOW PROFILE CAP SCREWS IF SCREW HEAD MUST BE SUBFLUSH.
 - FOR PROPER FUNCTION, ASSEMBLY MUST INCLUDE (2) TYPE T HINGES. FOR ASYMMETRIC TORQUE, USE (1) RT HINGE AND (1) FT HINGE.



PART NUMBER	DESCRIPTION	FINISH
ST-7A2-XXXXT-33	ASSEMBLY - AS CAST	NATURAL
ST-7A2-XXXXT-50	ASSEMBLY - POWDER COATED	BLACK
ST-7A2-XXXXT-53	ASSEMBLY - ZINC PLATED	BLACK

CPB NUMBER 2019-0996	THIRD ANGLE PROJECTION	
SURFACE AREA	MILLIMETERS [IN]	
VOLUME	TOLERANCES UNLESS OTHERWISE NOTED	DESCRIPTION HINGE & CONTROLLED MOTION DEVICE ST-7A2 HINGE ASSEMBLY TYPE T
PROPRIETARY ITEM EXCEPT FOR USES EXPRESSLY GRANTED IN WRITING, INFORMATION DISCLOSED HEREON IS CONFIDENTIAL AND ALL RIGHTS, PATENT AND OTHERWISE, ARE RESERVED BY SOUTHCO, INC.	ALL DIMENSIONS WITHOUT TOLERANCES ARE FOR REFERENCE ONLY.	SIZE SYSTEM A3 NX
PER ASME Y14.5M-2009	DRAWN BY GEA	DWG NO. J-ST-7A2-T
	DATE 25JAN2022	SCALE 1:1
		SHEET 1 OF 1