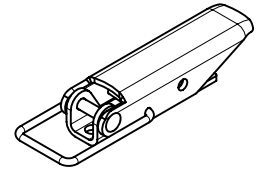
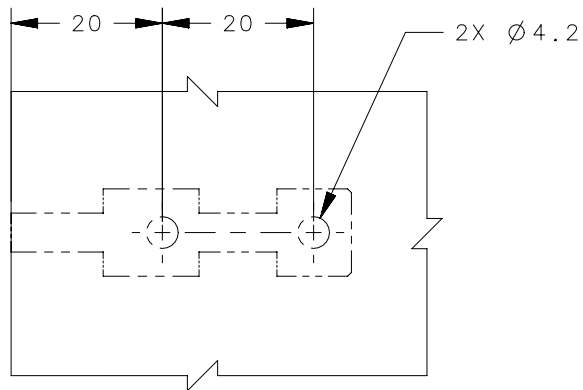
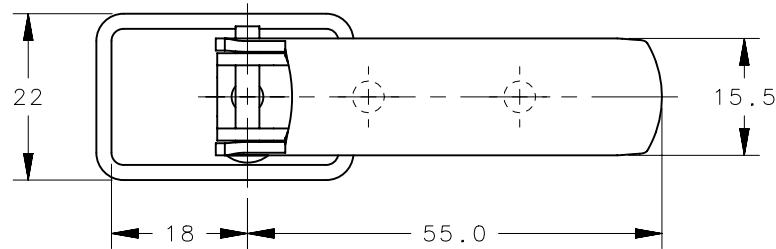


PART NO.	MATERIAL/FINISH
TL-40-201-07	CARBON STEEL / ZINC PLATE & TRIVALENT PASSIVATE
TL-40-201-10	CARBON STEEL / CHROME PLATE
TL-40-201-13	CARBON STEEL / ZINC PLATE & BLACK PASSIVATE
TL-40-201-24	316 STAINLESS STEEL / ELECTRO POLISHED
TL-40-201-52	304 STAINLESS STEEL / PASSIVATED

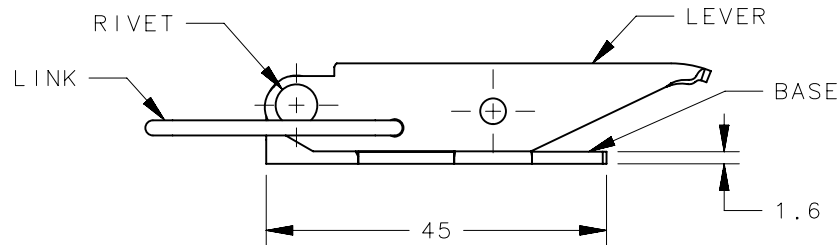
REVISION HISTORY			
REV	DATE	BY	DESCRIPTION
B	27FEB2013	DMS/YGC	PRN: P2013-0456



SCALE 1:2



PANEL PREPARATION



NOTE:  
1. RECOMMENDED:  
MOUNT WITH M4 SCREWS OR Ø4 RIVETS.

TL-40-201-XX	TOGGLE LATCH	SEE TABLE	SEE TABLE
PART NUMBER	TYPE OF COMPONENT	MATERIAL	FINISH
	THIRD ANGLE PROJECTION	 CONNECT • CREATE • INNOVATE	
	MILLIMETERS [IN]		
	TOLERANCES UNLESS OTHERWISE NOTED	DESCRIPTION TOGGLE LATCH ASSEMBLY	
	ALL DIMENSIONS WITHOUT TOLERANCES ARE FOR REFERENCE ONLY.	SIZE A4	SYSTEM NX
	PER ASME Y14.5M-1994	DWG NO. J-TL-40-201	
<small>PROPRIETARY ITEM EXCEPT FOR USES EXPRESSLY GRANTED IN WRITING, INFORMATION DISCLOSED HEREON IS CONFIDENTIAL AND ALL RIGHTS, PATENT AND OTHERWISE, ARE RESERVED BY SOUTHCO, INC.</small>		DRAWN BY MW	DATE 10MAY2006
		SCALE 1:1	SHEET 1 OF 1