

NOTES:

- A. MATERIAL AND FINISH:
  - BLADE, LEVER, AND KEEPER: DIE CAST ZINC, FINISH (SEE P/NO. TABLE);
  - BASE, SPRING, SHORT AND LONG PINS, AND LOCK PLATE: STAINLESS STEEL, PASSIVATED;
  - LOCK PLUG WITH STAINLESS STEEL SHUTTER: DIE CAST ZINC, NICKEL PLATED.
  - KEYS: DIE CAST ZINC, NICKEL PLATED.
- B. SOUTHCO RECOMMENDS THAT MOUNTING LATCH AND KEEPER ONTO PANELS WITH 6 PCS OF M3 FLAT HEAD SCREW; LENGTH OF SCREWS DEPEND ON PANEL THICKNESS.
- C. MOUNTING SCREWS ARE NOT PROVIDED BY SOUTHCO.
- D. TWO KEYS ARE SHIPPED WITH LOCKING VERSION.
- E. FOR LOCKING VERSION, KEY CODE IS THE SAME AS SOUTHCO STANDARD LARGE V7'S (PART NUMBER: V7-20-111-XX).



PROPRIETARY ITEM - EXCEPT FOR USES EXPRESSLY GRANTED IN WRITING, INFORMATION DISCLOSED HEREON IS CONFIDENTIAL AND ALL RIGHTS, PATENT AND OTHERWISE ARE RESERVED BY SOUTHCO, INC.

V7 DRAW LATCH ASSEMBLY, SMALL SIZE

DATE	DRAWN	CHKD	SCALE	DRAWING NUMBER
24DEC2004	RC	LJ	1:1	J-V7-1

REV	DATE	DRAWN/CHKD	DESCRIPTION	PART NUMBER	MATERIAL	FINISH
1	06JUL2005	RC	RELEASED FOR LAUNCH	SEE P/NO. TABLE	SEE NOTE A	SEE NOTE A

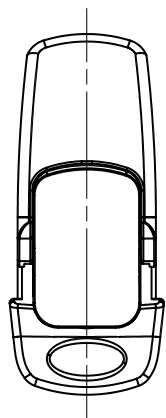
**MILLIMETERS**

ALL DIMENSIONS WITHOUT TOLERANCES ARE FOR REFERENCE ONLY.

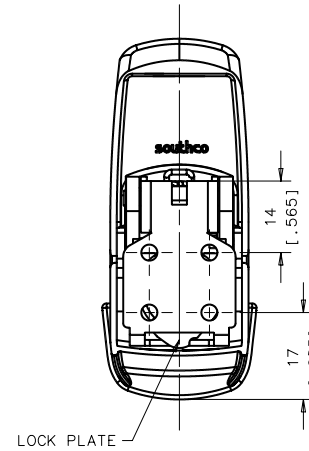
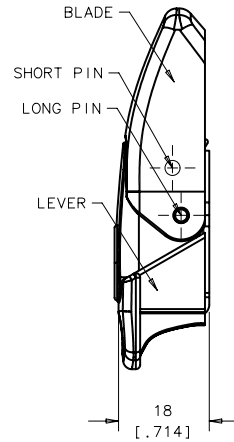
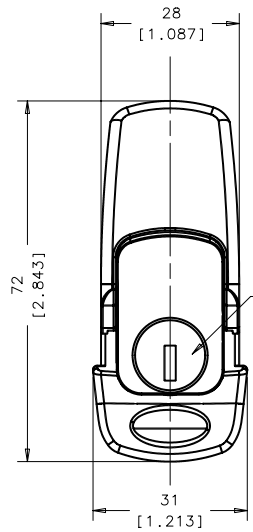
THIRD ANGLE PROJECTION

A3 PAPER SIZE

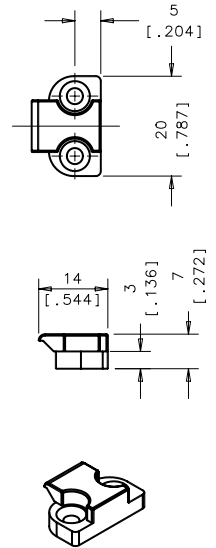
NON-LOCKING VERSION



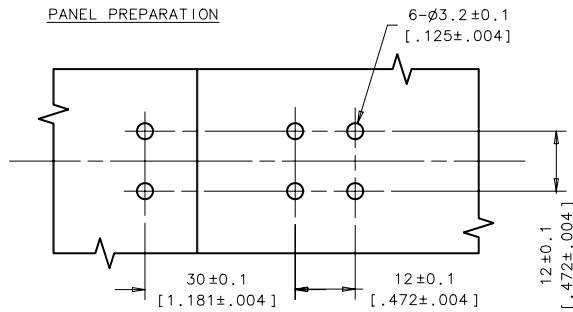
LOCKING VERSION



KEEPER



PANEL PREPARATION



P/NO. TABLE:

FINISH	VERSION	LATCH ASSEMBLY WITH KEEPER		LATCH SUBASSEMBLY		KEEPER
		W/O DRAG FEATURE	WITH DRAG FEATURE	W/O DRAG FEATURE	WITH DRAG FEATURE	
BRIGHT CHROME	NON-LOCKING	V7-10-101-10	V7-10-105-10	V7-11-101-10	V7-11-105-10	V7-17-101-10
	LOCKING	V7-10-111-10	V7-10-115-10	V7-11-111-10	V7-11-115-10	V7-17-101-10
SATIN CHROME	NON-LOCKING	V7-10-101-20	V7-10-105-20	V7-11-101-20	V7-11-105-20	V7-17-101-20
	LOCKING	V7-10-111-20	V7-10-115-20	V7-11-111-20	V7-11-115-20	V7-17-101-20
BLACK POWDER COATED	NON-LOCKING	V7-10-101-50	V7-10-105-50	V7-11-101-50	V7-11-105-50	V7-17-101-50
	LOCKING	V7-10-111-50	V7-10-115-50	V7-11-111-50	V7-11-115-50	V7-17-101-50