

KEYS
SCALE:0.5:1

SCALE:0.5:1

southco PROPRIETARY ITEM - EXCEPT FOR USES EXPRESSLY GRANTED IN WRITING INFORMATION DISCLOSED HEREIN IS CONFIDENTIAL AND ALL RIGHTS, PATENT AND OTHERWISE ARE RESERVED BY SOUTHCO, INC.

V7 DRAW LATCH ASSEMBLY
STAINLESS STEEL

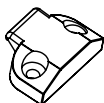
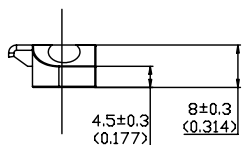
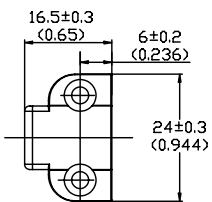
DATE	DRAWN	CHKD	SCALE	DRAWING NUMBER
10MAR2007	H.L.	D.K.	1:1	J-V7-20-111

REV	DATE	DRAWN/CHKD	DESCRIPTION	ITEM	PART NUMBER	MATERIAL	FINISH
A			RELEASED	LOCKING ASSEMBLY	V7-20-111-24	SEE NOTE A	SEE NOTE A
				NON-LOCKING ASSEMBLY	V7-20-101-24	SEE NOTE A	SEE NOTE A

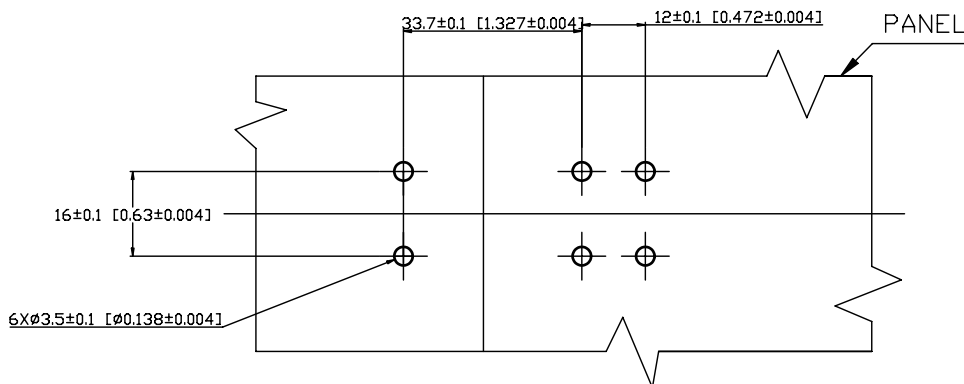
MILLIMETERS
TOLERANCES UNLESS OTHERWISE NOTED
ALL DIMENSIONS WITHOUT
TOLERANCES ARE FOR
REFERENCE ONLY.

THIRD ANGLE PROJECTION A3 PAPER SIZE

KEEPER

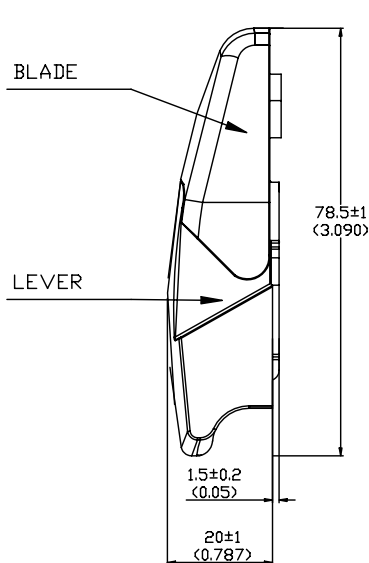
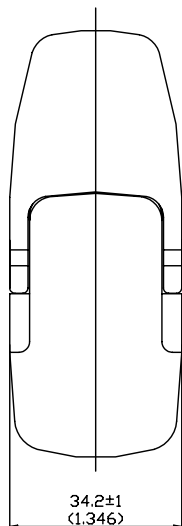


PANEL PREPARATION



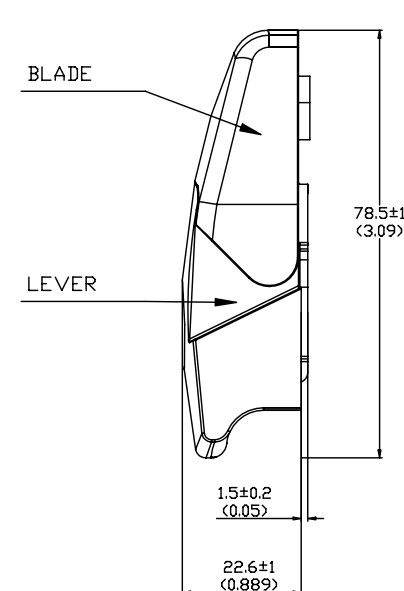
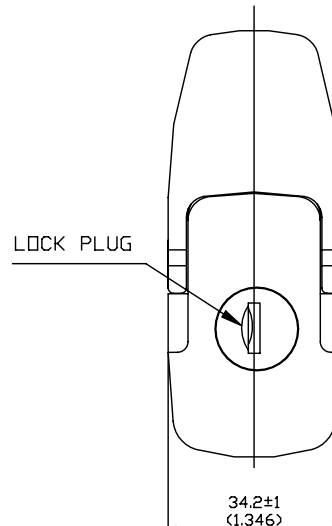
NON-LOCKING LATCH SUB-ASSEMBLY

(V7-20-101-24)



LOCKING LATCH SUB-ASSEMBLY

(V7-20-111-24)



NOTES:

A. MATERIAL AND FINISH:

BLADE LEVER,KEEPER-CAST STAINLESS STEEL,POLISHED
BASE,SPRING,LOCK PLATE AND PINS-STAINLESS STEEL,PASSIVATED
LOCK PLUG,HOUSING -STAINLESS STEEL,PASSIVATED SHUTTER KEY-BRASS,NICKEL
PLATED ,SCREWS

B. SOUTHCO RECOMMENDS MOUNTING LATCH AND KEEPER ONTO THE PANEL WITH
6 M3 FLAT HEND SCREWS,LENGTH OF SCREWS,DEPENDS ON PANEL THICKNESS

C. MOUNTING SCREWS ARE NOT PROVIDED BY SOUTHCO

D. TWO KEYS ARE SHIPPED WITH LOCKING VERSION