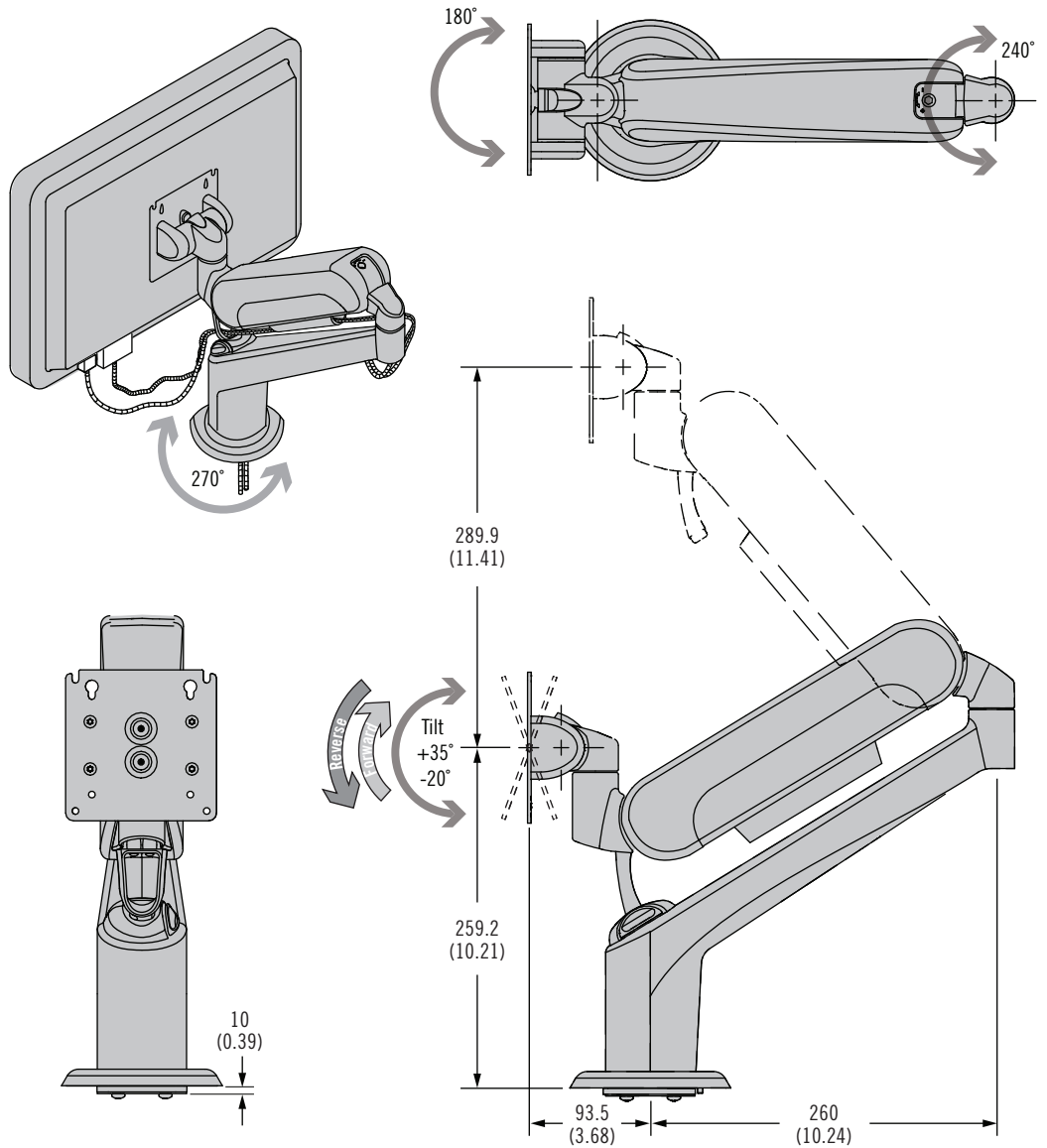




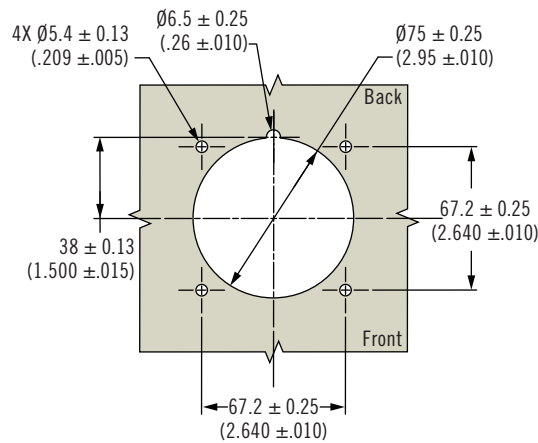
AV Series Dynamic Mounting Arm

Tilt and swivel · Double arm · Height Adjusting

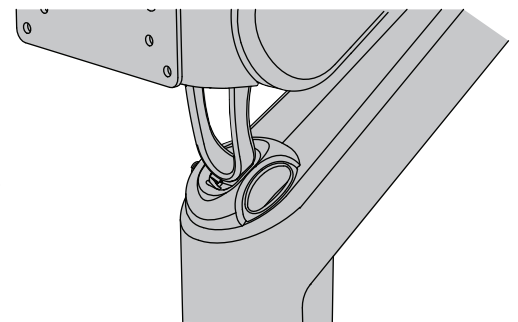
- Intuitive grab and move operation enhances the user experience**
 No knobs or tools required to reposition the monitor
 Precise control of operating effort ensures ideal “feel” and eliminates “drift”
 Holds securely, even in applications with dynamic loading
- Consistent repeatable operation**
- Fully enclosed for optimum cleanability**
- Snap-open channels simplify wire management**
- Factory assembled and ready for use**
- Optional locking mechanism in stowed position**



Panel Preparation



Optional Locking Mechanism



AV Series Dynamic Mounting Arm

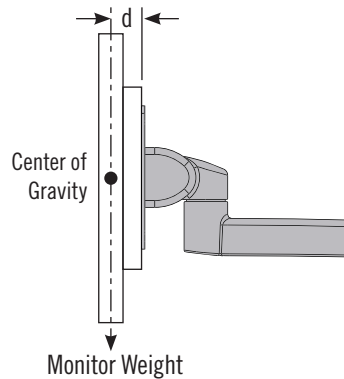
Tilt and swivel · Double arm · Height Adjusting



Specification and Selection

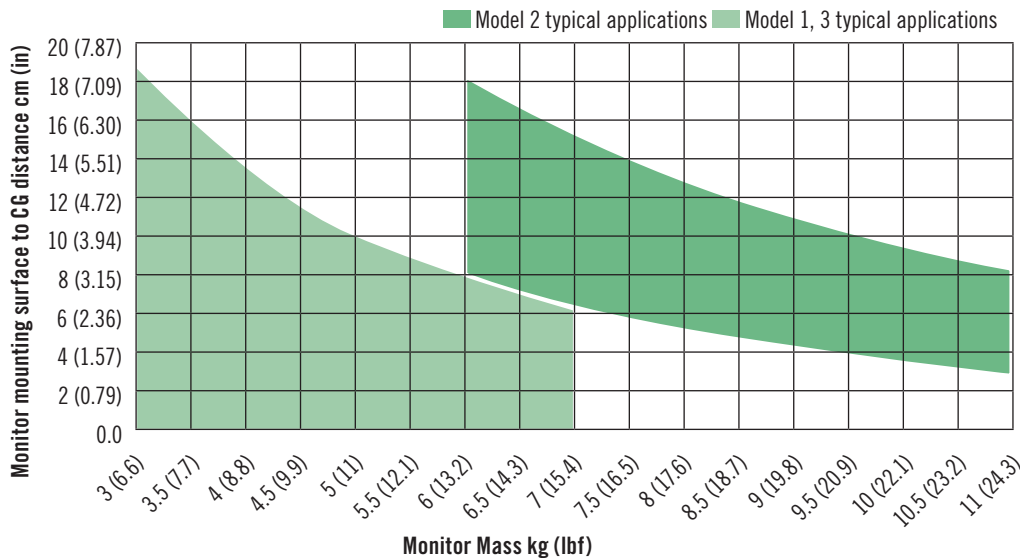
Step 1

Determine monitor weight and distance (d) from mounting surface to center of gravity.



Step 2

Use chart below to select model (1, 2 or 3).



Step 3

Complete part number by selecting model and color options below.

AV - D32-61 W **K** 13 **S** - **F**

Model	Tilt Torque N-m (in lbf)		Maximum Monitor Weight kg(lb)
	Reverse	Forward	
1	7.9 (70)	1.13 (10)	7 (15)
2	15.4 (136)	2.26 (20)	10 (22)
3	8.6 (76)	6.0 (53)	7 (15)

K	Optional Locking Mechanism
C	With Locking Mechanism
Omit	Non-Locking

F	Color
50	Black
76	White

Material and Finish

Aluminum alloy, powder coated

Performance Details

Cycle performance: 20,000 cycles.

Swivel Torque:

At Device Mount: 4.3 N-m (38 in-lbf)

At Center Joint: 6.0 N-m (53 in-lbf)

At Mounting Surface: 6.8 N-m (60 in-lbf)

Average ultimate load:

490N (110 lbf)

See trade drawing for details.

Part Number Example:

AV-D32-61WC131-50 = Model 1, locking, black



AV Series Dynamic Mounting Arm

Tilt and swivel · Double arm · Height Adjusting

- Intuitive grab and move operation enhances the user experience**

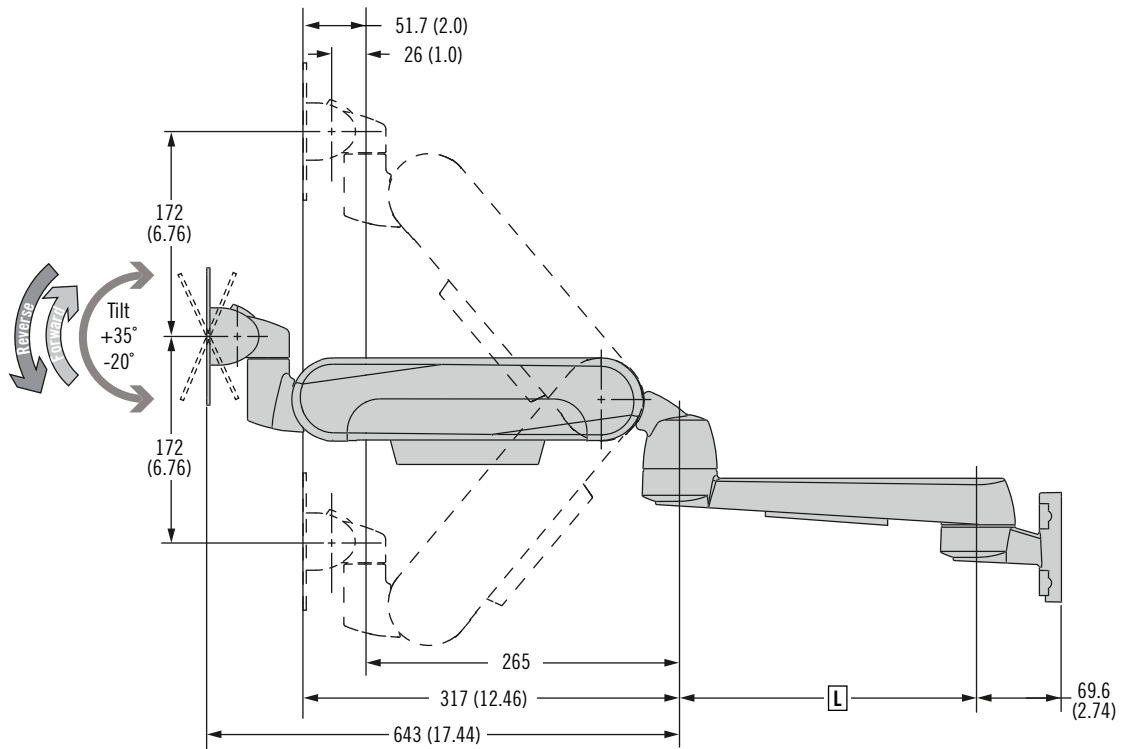
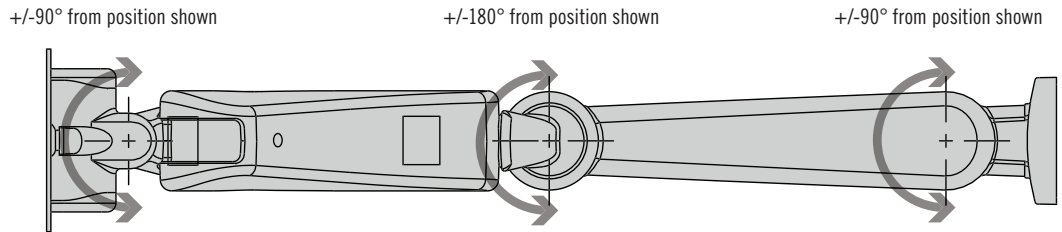
No knobs or tools required to reposition the monitor

Precise control of operating effort ensures ideal “feel” and eliminates “drift”

Holds securely, even in applications with dynamic loading

- **Consistent repeatable operation**
- **Fully enclosed for optimum cleanability**
- **Snap-open channels simplify wire management**
- **Factory assembled and ready for use**

For mounting options and installation detail please refer to pages 84-85



AV Series Dynamic Mounting Arm

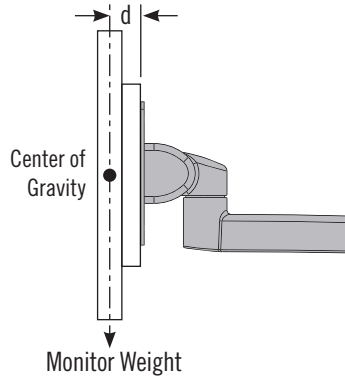
Tilt and swivel · Double arm · Height Adjusting



Specification and Selection

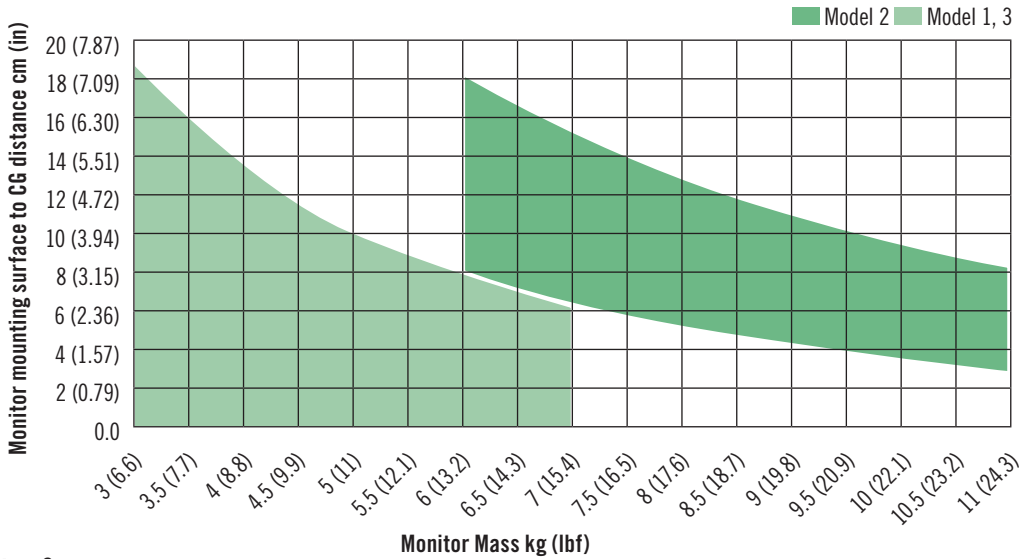
Step 1

Determine monitor weight and distance (d) from mounting surface to center of gravity.



Step 2

Use chart below to select model (1, 2 or 3).



Step 3

Complete part number by selecting model and color options below.

AV - D32 - L 1 K S - F

[L]	Length
72W	Height adjusting + 250mm lateral arm
79W	Height adjusting + 325mm lateral arm

[F]	Color
50	Black
76	White

[S]	Monitor Size
1	Small monitor, easiest positioning
3	Small monitor, extra holding force
2	Medium monitor

[K]	Mounting Style
4	Wall mount, Front
6	Pole mount (35-38mm Pole)
7	Rail mount

Material and Finish

Aluminum alloy, powder coated

Performance Details

Cycle performance: 20,000 cycles.

Swivel Torque:

At Device Mount: 4.3 N-m
(38 in-lbf)

At Center Joint: 6.0 N-m (53 in-lbf)

At Mounting Surface: 6.0Nm
(53in-lbf)

Average ultimate load:

490N (110 lbf)

See trade drawing for details.

Part Number Example:

AV-D32-72W141-50 = 250mm lower arm, Model 1, wall mount, black