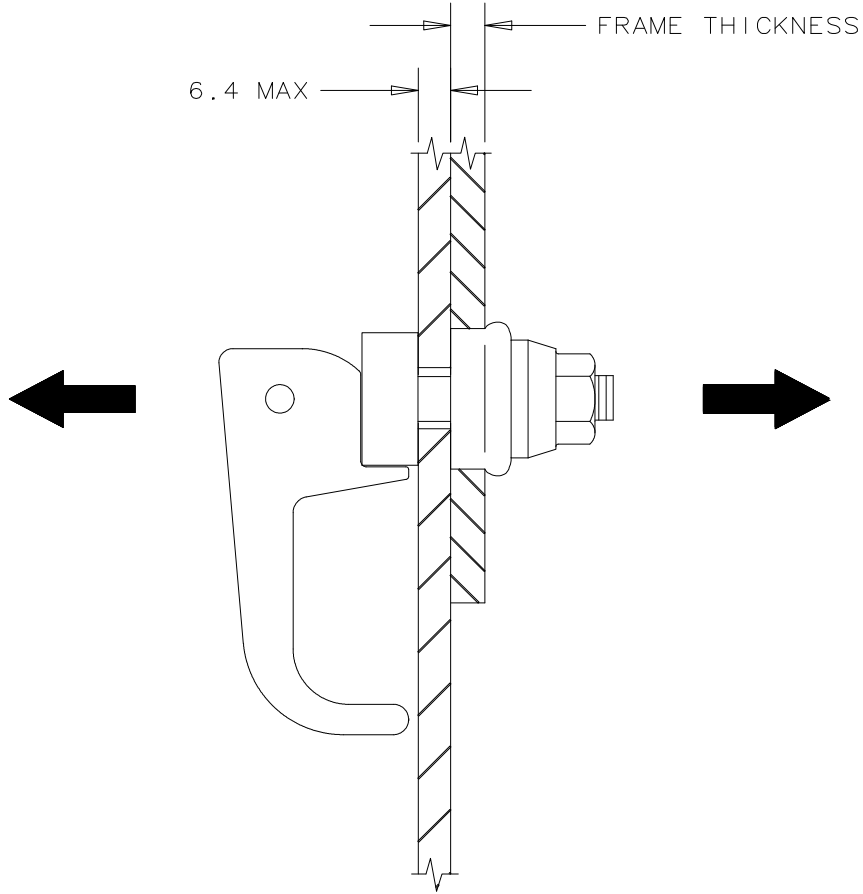


SOUTHCO PERFORMANCE GUIDELINES  
THE PERFORMANCE GUIDELINES SHOWN ON THIS PAGE ARE SUPPLIED AS A GENERAL GUIDE ONLY, AS CONDITIONS VARY WITH EACH APPLICATION AND METHOD OF INSTALLATION. STRENGTH DATA GIVEN IS FOR FAILURE OF THE PRODUCT OR FOR SUFFICIENT DEFORMATION TO MAKE PRODUCT INOPERABLE. NO SAFETY FACTOR HAS BEEN APPLIED. IT IS RECOMMENDED THAT THE USER REQUEST A PRODUCT SAMPLE FOR TESTING TO DETERMINE THE SUITABILITY OF THE PRODUCT FOR THE PURPOSE INTENDED AND USER'S PARTICULAR APPLICATION.



PART NUMBER	FRAME THICKNESS mm (in)	HOLE DIAMETER mm (in)	RATED LOAD* (SHORT TERM)
19-14-10	1.2 (.05) to 3.2 (.13)	19 (.750)	330 N (75 lbs.)
	3.2 (.13) to 4.8 (.19)	19.5 (.766)	660 N (150 lbs.)
	4.8 (.19) to 6.4 (.25)	20 (.781)	550 N (125 lbs.)
	6.4 (.25) and up	20.5 (.797)	220 N (50 lbs.)

\*Latches should not be loaded continuously at values near to the short term rated load.