

southco

PROPRIETARY ITEM - EXCEPT FOR USES EXPRESSLY GRANTED IN WRITING INFORMATION DISCLOSED HEREON IS CONFIDENTIAL AND ALL RIGHTS PATENT AND OTHERWISE ARE RESERVED BY SOUTHCO, INC.

No. 62 FASTENER - 700 SERIES

DATE
29AUG75

DRAWN/CHKD
PEK

SCALE
NTS

DRAWING NUMBER
TD-62-7-J

REV
B

DATE
09APR2002

DRAWN/CHKD
GDM

DESCRIPTION
UPDATE FORMAT

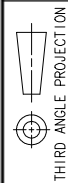
DESCRIPTION
UPDATE FORMAT

DESCRIPTION
UPDATE FORMAT

DESCRIPTION
UPDATE FORMAT

DESCRIPTION
UPDATE FORMAT

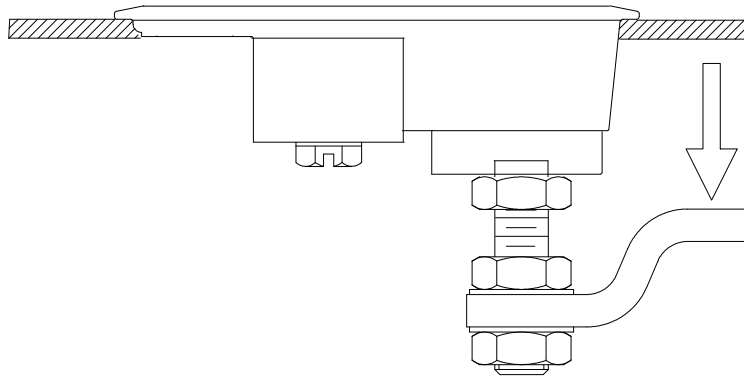
DESCRIPTION
UPDATE FORMAT



THIRD ANGLE PROJECTION

A
PAPER
SIZE

SOUTHCO PERFORMANCE GUIDELINES
THE PERFORMANCE GUIDELINES SHOWN ON THIS PAGE ARE SUPPLIED AS A GENERAL GUIDE ONLY. AS CONDITIONS VARY WITH EACH APPLICATION AND METHOD OF INSTALLATION, STRENGTH DATA GIVEN IS FOR FAILURE OF THE PRODUCT OR FOR SUFFICIENT DEFORMATION TO MAKE PRODUCT INOPERABLE. NO SAFETY FACTOR HAS BEEN APPLIED IT IS RECOMMENDED THAT THE USER REQUEST A PRODUCT SAMPLE FOR TESTING TO DETERMINE THE SUITABILITY OF THE PRODUCT FOR THE PURPOSE INTENDED AND USER'S PARTICULAR APPLICATION.



No. 62 LIFT AND TURN LATCH - 700 SERIES

FASTENER YIELDED WHEN A LOAD OF 222 N (50 LBS) WAS APPLIED IN THE DIRECTION OF THE ARROW.