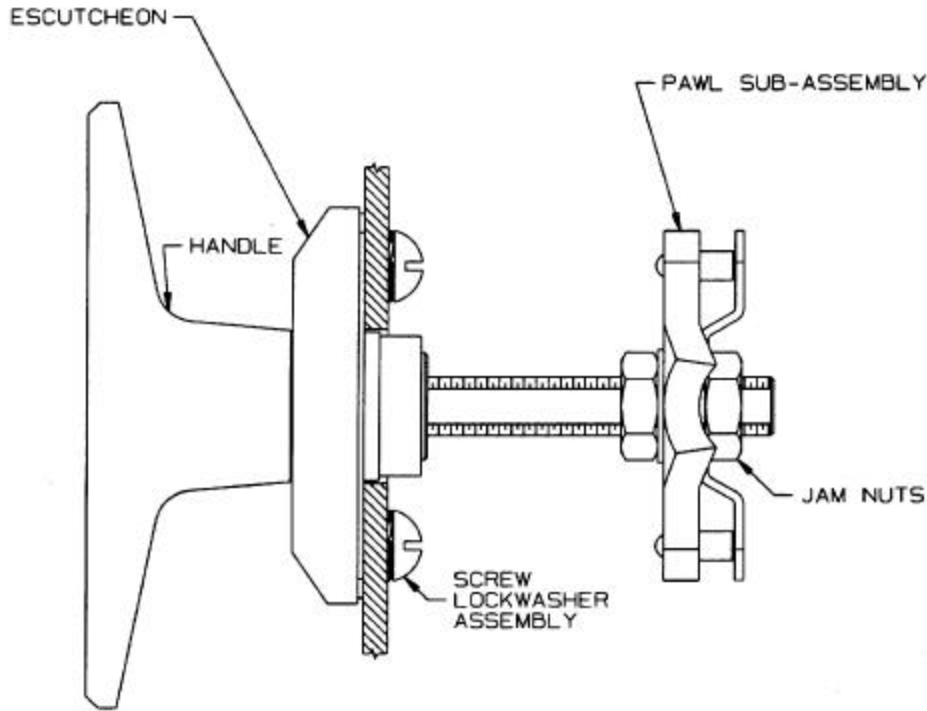


GENERAL PERFORMANCE GUIDELINES

The information shown on this page was determined under one set of test conditions. Since conditions vary with each application, it is supplied as a general guide only. No safety factor has been applied. We recommend testing the product under actual application conditions to determine its suitability for the intended use.



PART NUMBER	MAXIMUM WORKING LOAD [Ⓒ]	AVERAGE ULTIMATE LOAD [Ⓓ]	MAXIMUM TIGHTENING TORQUE OF JAM NUTS
92-XX-XXX-XX (SHORTEST SHAFT, SHORT PAWL)	350 N (80 lbs.)	1420 N (320 lbs.)	17 Nm (150 in. lbs.)
92-XX-XXX-XX (SHORTEST SHAFT, LONG PAWL)	180 N (40 lbs.)	825 N (185 lbs.)	
92-XX-XXX-XX (LONGEST SHAFT, SHORT PAWL)	440 N (100 lbs.)	1050 N (235 lbs.)	
92-XX-XXX-XX (LONGEST SHAFT, LONG PAWL)	110 N (25 lbs.)	525 N (115 lbs.)	

- Ⓐ CYCLE LIFE IS 10,000 CYCLES.
- Ⓑ AVERAGE ULTIMATE LOAD IS THE LOAD THAT CAUSES EXCESSIVE PAWL AND/OR SHAFT DEFORMATION, WHICH RENDERS THE PRODUCT INOPERABLE.
- Ⓒ WORKING LOAD IS THE MAXIMUM RECOMMENDED LOAD AT WHICH THE PRODUCT CONTINUES TO FUNCTION PROPERLY.