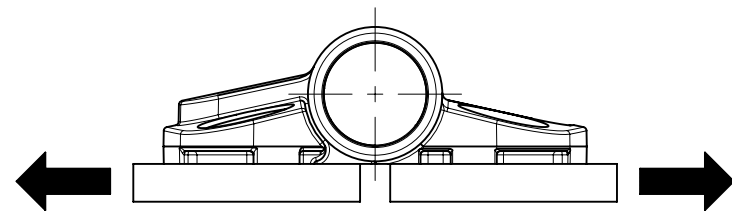
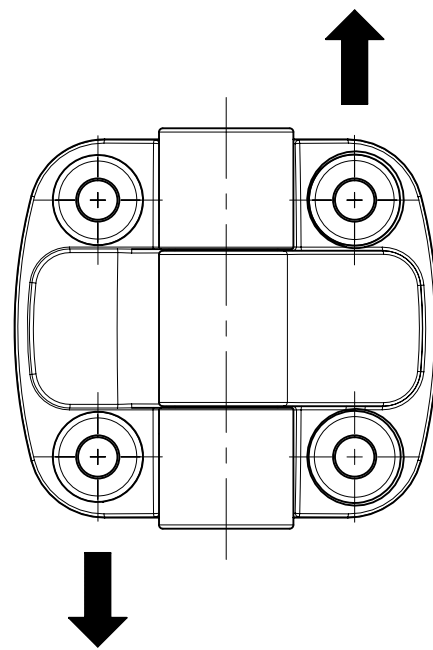


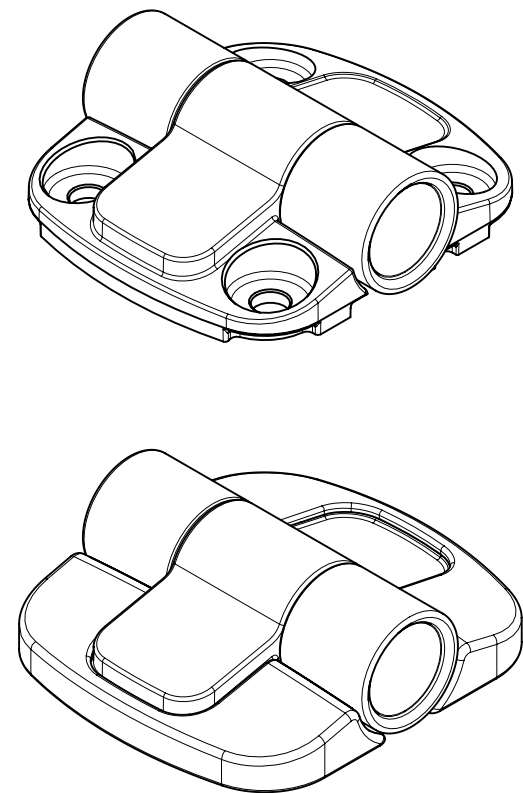
REVISION HISTORY			
REV	DATE	BY	DESCRIPTION
B	01JUL2015	JJT/MJS	PRN: P2015-1284



RADIAL



AXIAL



PART NUMBER		NOMINAL BREAKAWAY TORQUE, N-m / in-lbf	AVERAGE ULTIMATE RADIAL LOAD, N/lbf	AVERAGE ULTIMATE AXIAL LOAD, N/lbf	CYCLE LIFE	WORKING LOAD, N/lbf	
						AXIAL	RADIAL
C6-221	C6-251	0.68 / 6	2440 / 550	1730 / 390	20,000	450 / 100	450 / 100
C6-222	C6-252						
C6-223	C6-253						
C6-224	C6-254						
C6-225	C6-255	1.13 / 10					
C6-226	C6-256						
C6-227	C6-257						
C6-228	C6-258	1.69 / 15					
C6-229	C6-259	0 / 0					
C6-220	C6-250						

SOUTHCO PERFORMANCE GUIDELINES:
 THE PERFORMANCE GUIDELINES SHOWN ON THIS PAGE ARE SUPPLIED AS A GENERAL GUIDELINE ONLY. AS CONDITIONS VARY WITH EACH APPLICATION AND METHOD OF INSTALLATION. STRENGTH DATA GIVEN IS FOR FAILURE OF THE PRODUCT OR FOR SUFFICIENT DEFORMATION TO MAKE THE PRODUCT INOPERABLE. NO SAFETY FACTOR HAS BEEN APPLIED IT IS RECOMMENDED THAT THE USER REQUEST A PRODUCT SAMPLE FOR TESTING TO DETERMINE THE SUITABILITY OF THE PRODUCT FOR THE PURPOSE INTENDED AND USER'S PARTICULAR APPLICATION.

REF: trC6-22319

THIRD ANGLE PROJECTION		southco [®] CONNECT • CREATE • INNOVATE	
INCHES [MM]			
SURFACE AREA in^2		DESCRIPTION C6 DETENT HINGE ASSEMBLY	
VOLUME in^3		TOLERANCES UNLESS OTHERWISE NOTED	
PROPRIETARY ITEM		ALL DIMENSIONS WITHOUT TOLERANCES ARE FOR REFERENCE ONLY.	
EXCEPT FOR USES EXPRESSLY GRANTED IN WRITING, INFORMATION DISCLOSED HEREON IS CONFIDENTIAL AND ALL RIGHTS, PATENT AND OTHERWISE, ARE RESERVED BY SOUTHCO, INC.		SIZE B	SYSTEM NX
PER ASME Y14.5M-1994		DWG NO. TD-C6-2-J	SCALE 1:1
		DRAWN BY JJT	DATE 24JUN2015
		SHEET 1 OF 1	