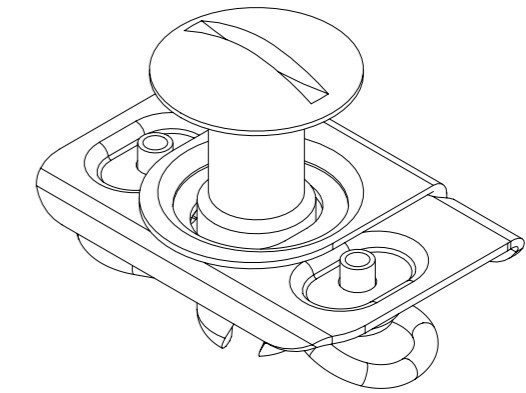
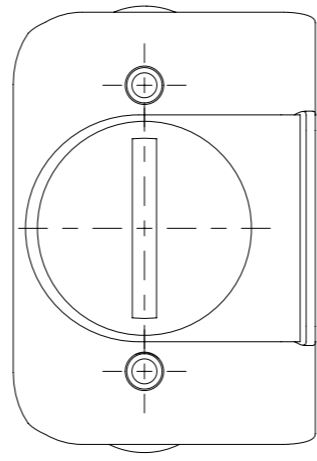


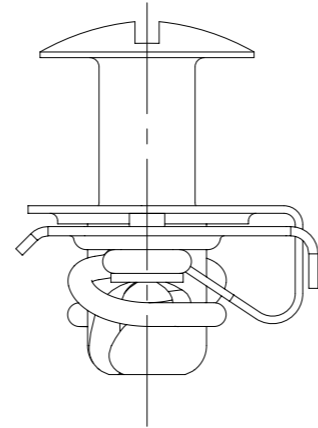
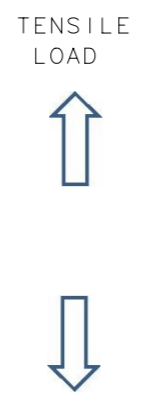
REVISION HISTORY			
REV	DATE	BY	DESCRIPTION
C	13AUG2015	DMS/YGC	PRN: P2015-1650

SOUTCO PERFORMANCE GUIDELINES

THE PERFORMANCE GUIDELINES SHOWN ON THIS PAGE ARE SUPPLIED AS A GENERAL GUIDE ONLY, AS CONDITIONS VARY WITH EACH APPLICATION AND METHOD OF INSTALLATION. STRENGTH DATA GIVEN IS FOR FAILURE OF THE PRODUCT OR FOR SUFFICIENT DEFORMATION TO MAKE PRODUCT INOPERABLE. NO SAFETY FACTOR HAS BEEN APPLIED IT IS RECOMMENDED THAT THE USER REQUEST A PRODUCT SAMPLE FOR TESTING TO DETERMINE THE SUITABILITY OF THE PRODUCT FOR THE PURPOSE INTENDED AND USER'S PARTICULAR APPLICATION.



SCALE 2:1



- NOTE:
- 1) AVERAGE ULTIMATE LOAD CAUSES FAILURE OF THE PRODUCT OR SUFFICIENT DEFORMATION TO MAKE THE PRODUCT INOPERABLE.
 - 2) AVERAGE ULTIMATE TORQUE CAUSES FAILURE OF THE PRODUCT OR SUFFICIENT DEFORMATION TO MAKE THE PRODUCT INOPERABLE.
 - 3) REF: trD4-7331

PARTS NUMBERS TESTED AS ASSEMBLY	AVERAGE ULTIMATE TORQUE	AVERAGE ULTIMATE TENSILE LOAD			
	D4-AJ5-70 (STUD) D4-SL4-280 (RECEPTACLE)	STEEL 5.46 Nm	STEEL 2360 N		
	THIRD ANGLE PROJECTION	southco [®] CONNECT • CREATE • INNOVATE			
	MILLIMETERS [IN]				
SURFACE AREA 3519.05mm ²	TOLERANCES UNLESS OTHERWISE NOTED UP TO 0.5 ±0.05 OVER 0.5 UP TO 6 ±0.1 OVER 6 UP TO 30 ±0.2 OVER 30 ±0.3 ANGLES ±1°	DESCRIPTION D4 STANDARD LINE SIZE #5 STUD WITH SLIP-ON-SPRING ASSEMBLY			
VOLUME 1586.50mm ³					
PROPRIETARY ITEM <small>EXCEPT FOR USES EXPRESSLY GRANTED IN WRITING, INFORMATION DISCLOSED HEREON IS CONFIDENTIAL AND ALL RIGHTS, PATENT AND OTHERWISE, ARE RESERVED BY SOUTHCO, INC.</small>			SIZE SYSTEM A3 NX	DWG NO. TD-D4-1	
			PER ASME Y14.5M-1994	DRAWN BY MWC/YGC	DATE 11OCT2013