

SOUTHCO PERFORMANCE GUIDELINES

THE PERFORMANCE GUIDELINES SHOWN ON THIS PAGE ARE SUPPLIED AS A GENERAL GUIDE ONLY, AS CONDITIONS VARY WITH THE APPLICATION AND METHOD OF INSTALLATION. STRENGTH DATA GIVEN IS FOR FAILURE OF THE PRODUCT OR FOR SUFFICIENT DEFORMATION TO MAKE PRODUCT INOPERABLE, NO SAFETY FACTOR HAS BEEN APPLIED - IT IS RECOMMENDED THAT THE USER REQUEST A PRODUCT SAMPLE FOR TESTING TO DETERMINE THE SUITABILITY OF THE PRODUCT FOR THE PURPOSE INTENDED AND USERS PARTICULAR APPLICATION.

COMPRESSIVE STRENGTH

MAXIMUM STATIC LOAD: 600 N (135 lbf)
 AVERAGE ULTIMATE LOAD: 1400 N (315 lbf)

INSTALLATION TORQUE

MOUNTING NUT (M22): 20Nm (177 lbf-in)

MAXIMUM DYNAMIC WORKING LOAD (CYCLE LIFE)

10,000 CYCLES WITH 450N PAWL LOAD

DEFINITIONS

MAXIMUM STATIC LOAD - THE MAXIMUM RECOMMENDED LOAD AFTER ONE TIME APPLICATION AND REMOVAL OF WHICH THE PRODUCT CONTINUES TO FUNCTION PROPERLY.

AVERAGE ULTIMATE LOAD - THE AVERAGE LOAD THAT CAUSES FAILURE OR EXCESSIVE DEFORMATION WHICH RENDERS THE PRODUCT INOPERABLE.

MAXIMUM DYNAMIC WORKING LOAD - THE MAXIMUM RECOMMENDED LOAD AT WHICH THE PRODUCT CONTINUES TO FUNCTION PROPERLY THROUGH THIS INTENDED CYCLE LIFE.

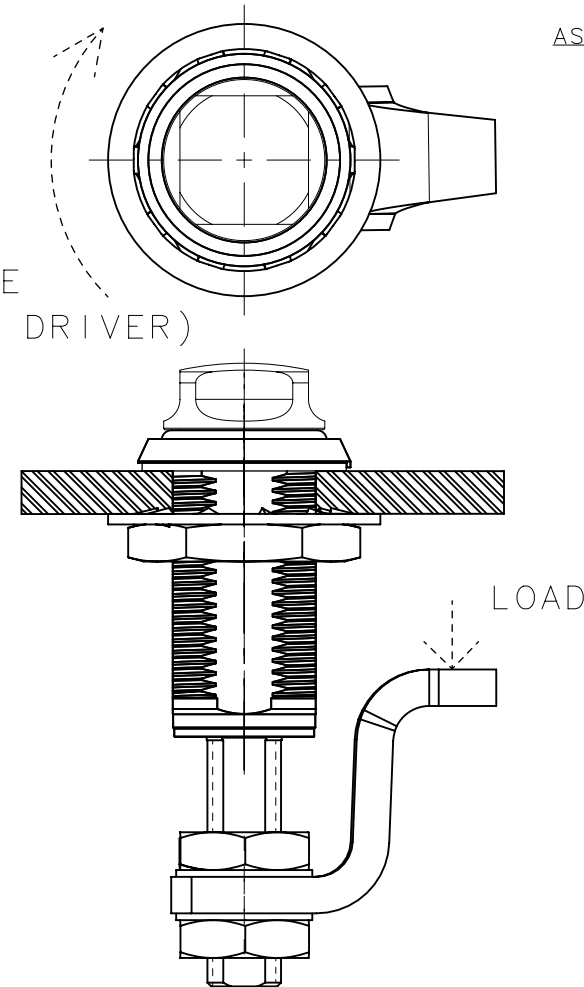
REF: trE3-37745

REVISION HISTORY			
REV	DATE	BY	DESCRIPTION
A	17JUN2019	CNS/SKB	PRN: 2019-1536

ASSEMBLY PART NUMBERS

E3-H138-X0
 E3-H2238-X0

TORQUE
 (APPLIED TO DRIVER)



E3-H138-10 SHOWN

CPB NUMBER 2017-0901	THIRD ANGLE PROJECTION	 CONNECT • CREATE • INNOVATE			
	MILLIMETERS [IN]				
	TOLERANCES UNLESS OTHERWISE NOTED	DESCRIPTION E3 VISE ACTION™ COMPRESSION LATCH ASSEMBLY			
	ALL DIMENSIONS WITHOUT TOLERANCES ARE FOR REFERENCE ONLY.	SINGLE HOLE MOUNT, VARIABLE GRIP, STAINLESS STEEL HYGIENE SERIES			
PROPRIETARY ITEM <small>EXCEPT FOR USES EXPRESSLY GRANTED IN WRITING, INFORMATION DISCLOSED HEREON IS CONFIDENTIAL AND ALL RIGHTS, PATENT AND OTHERWISE, ARE RESERVED BY SOUTHCO, INC.</small>	PER ASME Y14.5M-1994	SIZE A4	SYSTEM NX	DWG NO. TD-E3-12-17-J	
		DRAWN BY CSN	DATE 22FEB2019	SCALE 1:1	SHEET 1 OF 1