

**SOUTHCO PERFORMANCE GUIDELINES:**

THE PERFORMANCE GUIDELINES SHOWN ON THIS PAGE ARE SUPPLIED AS A GENERAL GUIDE ONLY, AS CONDITIONS VARY WITH THE APPLICATION AND METHOD OF INSTALLATION. STRENGTH DATA GIVEN IS FOR FAILURE OF THE PRODUCT OR FOR SUFFICIENT DEFORMATION TO MAKE PRODUCT INOPERABLE. NO SAFETY FACTOR HAS BEEN APPLIED - IT IS RECOMMENDED THAT THE USER REQUEST A PRODUCT SAMPLE FOR TESTING TO DETERMINE THE SUITABILITY OF THE PRODUCT FOR THE INTENDED PURPOSE AND APPLICATION.

SPECIFICATION	ATTRIBUTE	RESULT	TEST
DYNAMIC LOAD CAPABILITY	CYCLE LOAD	450N (100lbf)	A
	CYCLE LIFE	10,000	A
STATIC LOAD CAPABILITY	MAXIMUM WORKING	450N (100lbf)	A,B
	AVERAGE ULTIMATE	756N (170lbf)	B
INSTALLATION TORQUE	RECOMMENDED M22 NUT	20Nm (177 lbf-in)	C
	RECOMMENDED MTG SCREW	10Nm (88.5 lbf-in)	D

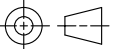
**DEFINITIONS:**

**MAXIMUM WORKING LOAD** - THE MAXIMUM RECOMMENDED LOAD THAT CAN BE APPLIED AND REMOVED ONE TIME AFTER WHICH THE PRODUCT CONTINUES TO FUNCTION PROPERLY.

**AVERAGE ULTIMATE LOAD** - THE AVERAGE LOAD THAT CAUSES FAILURE OR EXCESSIVE DEFORMATION WHICH RENDERS THE PRODUCT INOPERABLE.

**MAXIMUM DYNAMIC WORKING LOAD** - THE MAXIMUM RECOMMENDED LOAD AT WHICH THE PRODUCT CONTINUES TO FUNCTION PROPERLY THROUGH ITS INTENDED CYCLE LIFE.

REF	REPORT	TEST#
A	trE3-52247	2
B	trE3-42244	2b
C	trE3-42244	4
D	trE3-42244	5b

CPB NUMBER 2017-0409
THIRD ANGLE PROJECTION 
MILLIMETERS [IN]
TOLERANCES UNLESS OTHERWISE NOTED
UP TO 0.5 ±0.05
OVER 0.5 UP TO 6 ±0.1
OVER 6 UP TO 30 ±0.2
OVER 30 ±0.3
ANGLES ±1°
PER ASME Y14.5M-1994
PROPRIETARY ITEM EXCEPT FOR USES EXPRESSLY GRANTED IN WRITING, INFORMATION DISCLOSED HEREON IS CONFIDENTIAL AND ALL RIGHTS, PATENT AND OTHERWISE, ARE RESERVED BY SOUTHCO, INC.

DESCRIPTION E3 COMPRESSION LATCH VISUAL INDICATOR, FIXED GRIP, MIM
SIZE A4
SYSTEM NX
DWG NO. TD-E3-A12-19-J
DRAWN BY VBC
DATE 07SEP2022
SCALE 1:1
SHEET 1 OF 1

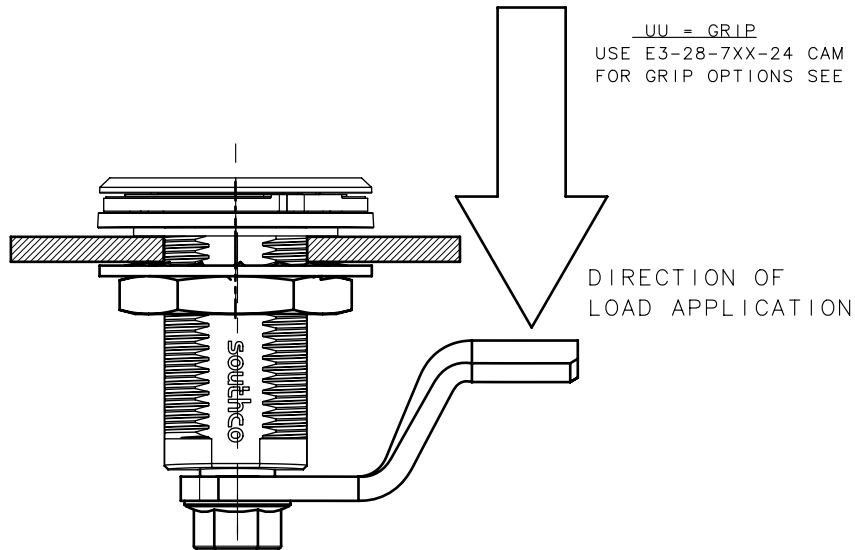
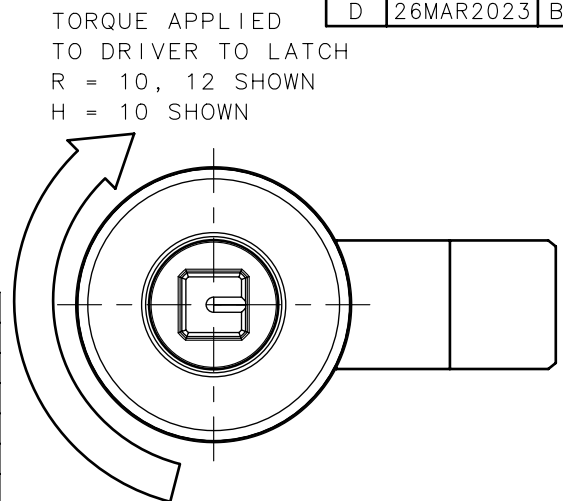
REVISION HISTORY			
REV	DATE	BY	DESCRIPTION
D	26MAR2023	BVH/IR	PRN: P2022-0942

**RELEVANT PART NUMBERS**

E3-ARH-UU2

- R = ACTUATION STYLE**
- 10 = LATCH SHIPPED ASSEMBLED, TYPE A (TURN CAP CLOCKWISE TO LATCH)
  - 12 = LATCH SHIPPED UNASSEMBLED, TYPE A (TURN CAP CLOCKWISE TO LATCH)
  - 27 = LATCH SHIPPED ASSEMBLED, TYPE B (TURN CAP COUNTER-CLOCKWISE TO LATCH)
  - 29 = LATCH SHIPPED UNASSEMBLED, TYPE B (TURN CAP COUNTER-CLOCKWISE TO LATCH)
- H = HEAD STYLES**
- 6 = 8 (.32) HEX RECESS
  - 9 = SLOTTED RECESS
  - 10 = 8 (.32) SQUARE DRIVER
  - 11 = RAILWAY STANDARD

**UU = GRIP**  
USE E3-28-7XX-24 CAM FAMILY,  
FOR GRIP OPTIONS SEE J-E3-A12-19



DIRECTION OF LOAD APPLICATION