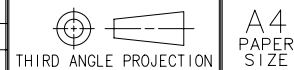
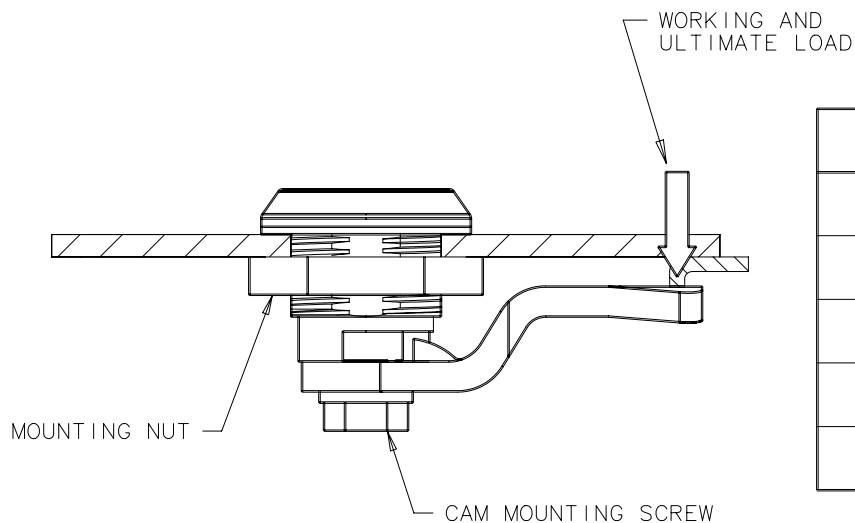


REV	DATE	DRAWN/CHKD	DESCRIPTION						
A	29JAN2009	JSS	PRN:P2009-0106						



SOUTHCO PERFORMANCE GUIDELINES  
 THE PERFORMANCE GUIDELINES SHOWN ON THIS PAGE ARE SUPPLIED AS A GENERAL GUIDE ONLY, AS CONDITIONS VARY WITH EACH APPLICATION AND METHOD OF INSTALLATION. STRENGTH DATA GIVEN IS FOR FAILURE OF THE PRODUCT OR FOR SUFFICIENT DEFORMATION TO MAKE PRODUCT INOPERABLE. NO SAFETY FACTOR HAS BEEN APPLIED IT IS RECOMMENDED THAT THE USER REQUEST A PRODUCT SAMPLE FOR TESTING TO DETERMINE THE SUITABILITY OF THE PRODUCT FOR THE PURPOSE INTENDED AND USER'S PARTICULAR APPLICATION.



		TYPE 304	TYPE 316
	TEST DESCRIPTION	E5-6-WW24-YY1 E5-32-WW24-YY1	E5-6-WW27-YY1 E5-32-WW27-YY1
	MAXIMUM RECOMMENDED WORKING LOAD ①	550 N	670 N
	AVERAGE ULTIMATE LOAD ②	750 N	900 N
	MOUNTING NUT TIGHTENING TORQUE ③	20 N•m	20 N•m
	MAXIMUM RECOMMENDED CAM SCREW TIGHTENING TORQUE ④	10 N•m	10 N•m
	CYCLE LIFE	5,000 AT 500 N	5,000 AT 500 N

- ① WORKING LOAD IS THE MAXIMUM FORCE THAT THE PRODUCT WILL WITHSTAND WITHOUT AFFECTING THE OPERATION OR APPEARANCE OF THE PRODUCT.
- ② AVERAGE ULTIMATE LOAD CAUSES FAILURE OF THE PRODUCT OR SUFFICIENT DEFORMATION TO MAKE THE PRODUCT INOPERABLE.
- ③ FAILURE OCCURED WHEN THE THREADS ON THE HOUSING STRIPPED.
- ④ FAILURE OCCURED WHEN THE SCREW HEAD SNAPPED OFF.