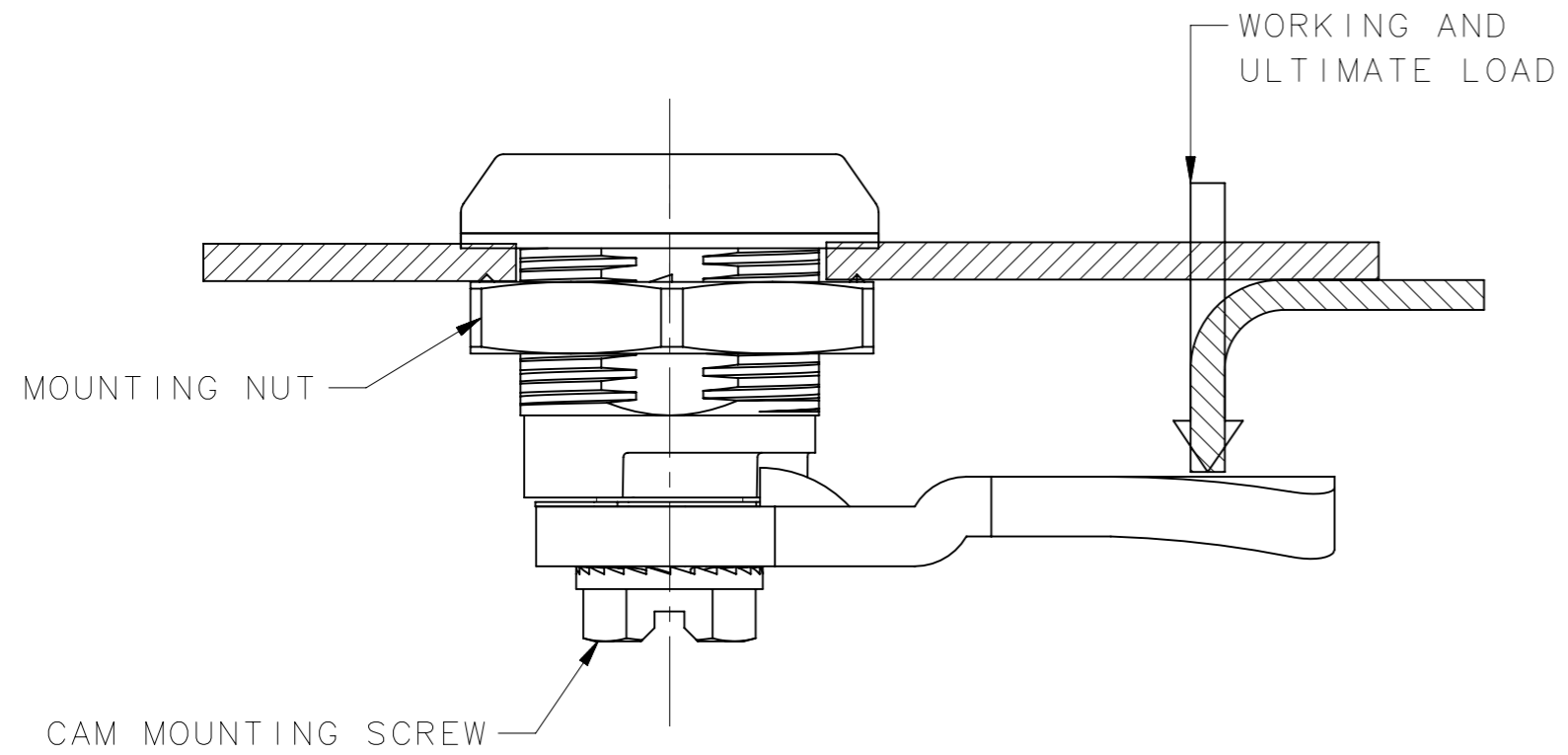


REVISION HISTORY			
REV	DATE	BY	DESCRIPTION
C	24OCT2016	CJ/JQ	PRN: P2016-2430

SOUTHCO PERFORMANCE GUIDELINES

THE PERFORMANCE GUIDELINES SHOWN ON THIS PAGE ARE SUPPLIED AS A GENERAL GUIDE ONLY, AS CONDITIONS VARY WITH EACH APPLICATION AND METHOD OF INSTALLATION. STRENGTH DATA GIVEN IS FOR FAILURE OF THE PRODUCT OR FOR SUFFICIENT DEFORMATION TO MAKE PRODUCT INOPERABLE. NO SAFETY FACTOR HAS BEEN APPLIED IT IS RECOMMENDED THAT THE USER REQUEST A PRODUCT SAMPLE FOR TESTING TO DETERMINE THE SUITABILITY OF THE PRODUCT FOR THE PURPOSE INTENDED AND USER'S PARTICULAR APPLICATION.



TEST DESCRIPTION	E5-8-WWX-UU1
MAXIMUM STATIC LOAD	330N
AVERAGE ULTIMATE LOAD	450N
MOUNTING NUT TIGHTENING TORQUE	10 N.m
MAXIMUM RECOMMENDED CAM SCREW TIGHTENING TORQUE	5 N.m
CYCLE LIFE	10000 AT 67N

MAXIMUM STATIC LOAD IS THE MAXIMUM RECOMMENDED LOAD AFTER ONE TIME APPLICATION AND REMOVAL OF WHICH THE PRODUCT CONTINUES TO FUNCTION PROPERLY.

REF trE5-24008 , trE5-24058

THIRD ANGLE PROJECTION		 CONNECT • CREATE • INNOVATE	
MILLIMETERS [IN]			
TOLERANCES UNLESS OTHERWISE NOTED		DESCRIPTION E5 SLIDE LATCH	
SURFACE AREA mm ²	ALL DIMENSIONS WITHOUT TOLERANCES ARE FOR REFERENCE ONLY.	SIZE A3	SYSTEM NX
VOLUME mm ³		DWG NO. TD-E5-8-J	
PROPRIETARY ITEM <small>EXCEPT FOR USES EXPRESSLY GRANTED IN WRITING, INFORMATION DISCLOSED HEREON IS CONFIDENTIAL AND ALL RIGHTS, PATENT AND OTHERWISE, ARE RESERVED BY SOUTHCO, INC.</small>	PER ASME Y14.5M-1994	DRAWN BY CJ/JQ	DATE 27APR2016
		SCALE 2:1	SHEET 1 OF 1