

REVISION HISTORY			
REV	DATE	BY	DESCRIPTION
A	17JUL2024	IR/MMM	PRN: P2024-1232

SOUTHCO PERFORMANCE GUIDELINES:

THE PERFORMANCE GUIDELINES SHOWN ON THIS PAGE ARE SUPPLIED AS A GENERAL GUIDE ONLY, AS CONDITIONS VARY WITH THE APPLICATION AND METHOD OF INSTALLATION. STRENGTH DATA GIVEN IS FOR FAILURE OF THE PRODUCT OR FOR SUFFICIENT DEFORMATION TO MAKE PRODUCT INOPERABLE. NO SAFETY FACTOR HAS BEEN APPLIED. IT IS RECOMMENDED THAT THE USER REQUEST A PRODUCT SAMPLE FOR TESTING TO DETERMINE THE SUITABILITY OF THE PRODUCT FOR THE PURPOSE INTENDED AND USERS PARTICULAR APPLICATION.

SPECIFICATION	RESULTS	
MAXIMUM WORKING LOAD	250 N (67 lbf)	A
AVERAGE ULTIMATE LOAD	435 N (121 lbf)	A
RECOMMENDED TIGHTENING TORQUE - MOUNTING NUT	20 Nm (177 lbf-in)	B
RECOMMENDED TIGHTENING TORQUE - MOUNTING SCREW	5 Nm (44 lbf-in)	C
CYCLE LIFE AT DYNAMIC WORKING LOAD	10,000 @ 125 N (28 LBF)	D

DEFINITIONS:

MAXIMUM WORKING LOAD - THE MAXIMUM RECOMMENDED LOAD AFTER ONE TIME APPLICATION AND REMOVAL OF WHICH THE PRODUCT CONTINUES TO FUNCTION PROPERLY.

AVERAGE ULTIMATE LOAD - THE AVERAGE LOAD THAT CAUSES FAILURE OR EXCESSIVE DEFORMATION WHICH RENDERS THE PRODUCT INOPERABLE.

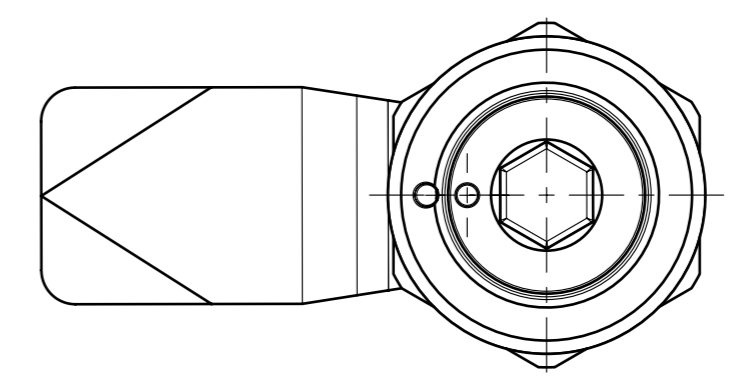
DYNAMIC WORKING LOAD - THE RECOMMENDED LOAD AT WHICH THE PRODUCT CONTINUES TO FUNCTION PROPERLY THROUGH ITS INTENDED LIFE CYCLE.

LOSS OF LOAD OVER CYCLE LIFE DID NOT EXCEED 31 N (7 lbf) BELOW DYNAMIC LOAD.

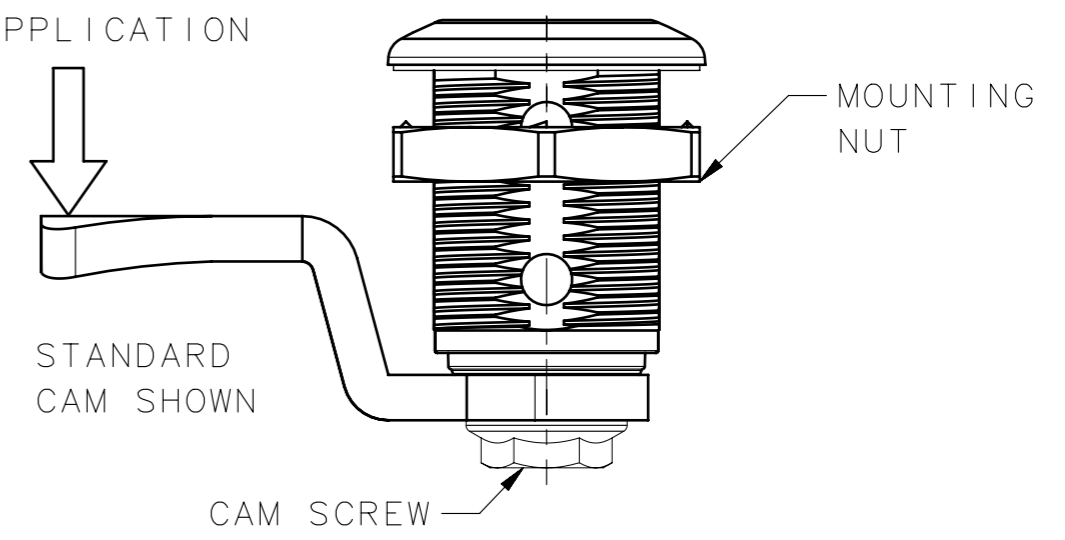
NOTES:

- ALL TESTING PERFORMED AT AMBIENT CONDITIONS.
- DURING CYCLE TESTING OF THE STANDARD CAM, A THIN FILM OF LUBRICATION WAS APPLIED TO THE FRAME/STRIKER AT THE START OF THE TEST TO REDUCE THE COEFFICIENT OF FRICTION.
- THE DATA ABOVE APPLIES TO ASSEMBLIES WITH STANDARD, PROTECTED, AND ROLLER CAMS.

REF	REPORT	TEST #
A	trE9-1141278 trE9-1615568	2A, B, C 2, 3, 4
B	trE9-1141278 trE9-1615568	4 5
C	trE9-1141278 trE9-1615568	5 6
D	trE9-1633125	1A, 1B 1C



LOAD APPLICATION



E9 - A0 HH R - 0 M

- | | |
|--|---|
| R = ROTATION | HH = HEAD STYLE |
| A - 90° CLOCKWISE TO LATCH | 00 - SLOTTED RECESS |
| B - 90° COUNTER CLOCKWISE TO LATCH | 01 - 8MM HEX RECESS |
| | 02 - 7MM TRIANGLE |
| | 03 - 8MM TRIANGLE |
| | 04 - 7MM SQUARE |
| | 05 - 8MM SQUARE |
| | 06 - 3MM DOUBLE BIT |
| | 07 - 5MM DOUBLE BIT |
| | 08 - 8MM SQUARE RECESS |
| | 10 - BELLCORE 216 |
| | 11 - BELLCORE ELECTRONICS |
| | 12 - RAILWAY STANDARD |

- M = FINISH
- BLACK POWDER COAT
 - SILVER POWDER COAT

CPB NUMBER 2019-1284	THIRD ANGLE PROJECTION	southco CONNECT • CREATE • INNOVATE	
MILLIMETERS [IN]		DESCRIPTION E9 COMPRESSION LATCH ASSEMBLY, ZINC, FIXED GRIP, TOOL OPERATED	
TOLERANCES UNLESS OTHERWISE NOTED		SIZE A3	SYSTEM NX
SURFACE AREA XXXXXmm ²		DWG NO. TD-E9-A0HHF-0M-J	
VOLUME XXXXXmm ³		DRAWN BY IR/	DATE 09JUL2024
PROPRIETARY ITEM EXCEPT FOR USES EXPRESSLY GRANTED IN WRITING, INFORMATION DISCLOSED HEREON IS CONFIDENTIAL AND ALL RIGHTS, PATENT AND OTHERWISE, ARE RESERVED BY SOUTHCO, INC.		SCALE NONE	SHEET 1 OF 1
PER ASME Y14.5M-2009			