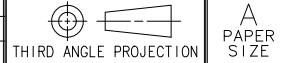
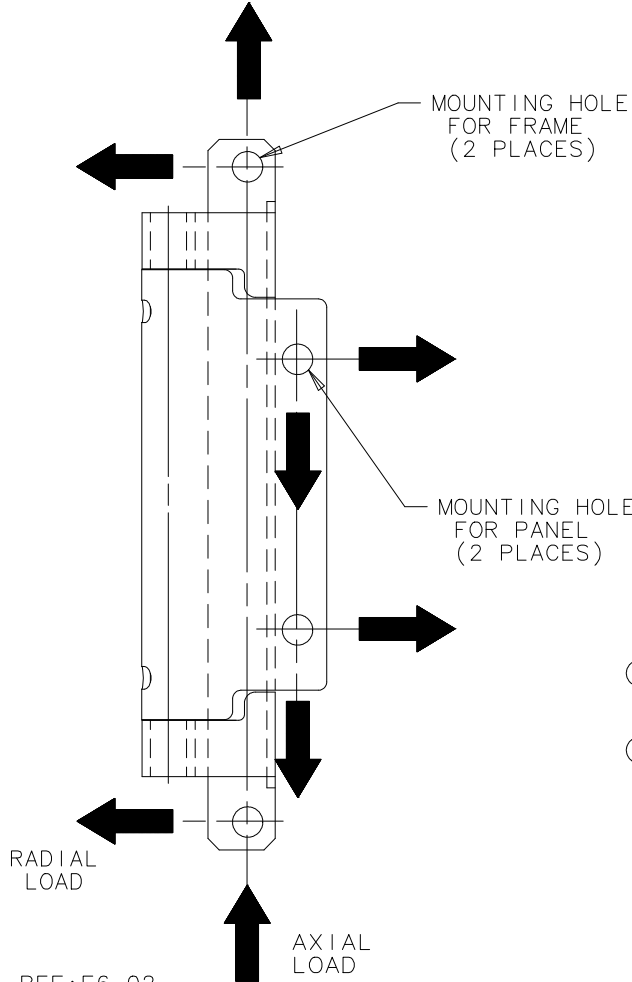


REV	DATE	DRAWN/CHKD	DESCRIPTION
C	30APR99	GDM	SEE RECORD PRINT
D	09APR2002	GDM	UPDATE FORMAT



SOUTHCO PERFORMANCE GUIDELINES  
 THE PERFORMANCE GUIDELINES SHOWN ON THIS PAGE ARE SUPPLIED AS A GENERAL GUIDE ONLY, AS CONDITIONS VARY WITH EACH APPLICATION AND METHOD OF INSTALLATION. STRENGTH DATA GIVEN IS FOR FAILURE OF THE PRODUCT OR FOR SUFFICIENT DEFORMATION TO MAKE PRODUCT INOPERABLE. NO SAFETY FACTOR HAS BEEN APPLIED IT IS RECOMMENDED THAT THE USER REQUEST A PRODUCT SAMPLE FOR TESTING TO DETERMINE THE SUITABILITY OF THE PRODUCT FOR THE PURPOSE INTENDED AND USER'S PARTICULAR APPLICATION.



PART NUMBER	AXIAL LOAD		RADIAL LOAD	
	MAX. WORKING LOAD	ULTIMATE LOAD	MAX. WORKING LOAD	ULTIMATE LOAD
F6-X	500 N (112 lbf)	800 N (180 lbf)	300 N (65 lbf)	340 N (76 lbf)
F6-X-1	800 N (180 lbf)	1340 N (300 lbf)	300 N (65 lbf)	440 N (100 lbf)

- ① MAX. WORKING LOAD is the maximum force that the product will withstand without affecting the operation or appearance of the product.
- ② ULTIMATE LOAD causes failure of the product or sufficient deformation to make the product inoperable.