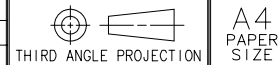
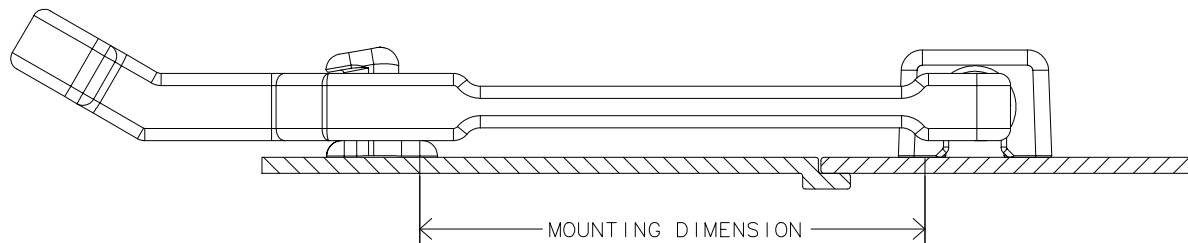


REV	DATE	DRAWN/CHKD	DESCRIPTION											



SOUTHCO PERFORMANCE GUIDELINES
 THE PERFORMANCE GUIDELINES SHOWN ON THIS PAGE ARE SUPPLIED AS A GENERAL GUIDE ONLY, AS CONDITIONS VARY WITH EACH APPLICATION AND METHOD OF INSTALLATION. STRENGTH DATA GIVEN IS FOR FAILURE OF THE PRODUCT OR FOR SUFFICIENT DEFORMATION TO MAKE PRODUCT INOPERABLE. NO SAFETY FACTOR HAS BEEN APPLIED IT IS RECOMMENDED THAT THE USER REQUEST A PRODUCT SAMPLE FOR TESTING TO DETERMINE THE SUITABILITY OF THE PRODUCT FOR THE PURPOSE INTENDED AND USER'S PARTICULAR APPLICATION.



ASSEMBLY PART NUMBER F7-6X

MOUNTING DIMENSIONS mm (inch)	AVERAGE CLAMPING FORCES VS TIME AND TEMPERATURE N (lbf)		AVERAGE ULTIMATE LOAD N (lbf) ③
	23°C (73°F)		
	INITIAL ①	STEADY STATE ②	
68.8 (2.71)	82 (18)	67 (15)	663 (149)
72.0 (2.83)	100 (22)	81 (18)	
75.2 (2.96)	118 (26)	95 (21)	
MAXIMUM TIGHTENING TORQUE N·m (lbf·in)			2.0 (18)

- ① THE INITIAL CLAMPING FORCE IS THE FORCE APPLIED TO THE PANEL WHEN HANDLE AND KEEPER ARE LATCHED.
- ② THE STEADY STATE CLAMPING FORCE IS THE DESIGN FORCE OF THE LATCH MEASURED AFTER THE INITIAL FORCE HAS RELAXED. THIS OCCURS OVER A TEST PERIOD OF APPROXIMATELY 24 HOURS AT ROOM TEMPERATURE.
- ③ THE AVERAGE ULTIMATE LOAD IS THE LOAD THAT RENDERS THE PRODUCT INOPERABLE.