

SOUTHCO PERFORMANCE GUIDELINES:
 THE PERFORMANCE GUIDELINES SHOWN ON THIS PAGE ARE SUPPLIED AS A GENERAL GUIDE ONLY, AS CONDITIONS VARY WITH EACH APPLICATION AND METHOD OF INSTALLATION. STRENGTH DATA GIVEN IS FOR FAILURE OF THE PRODUCT OR FOR SUFFICIENT DEFORMATION TO MAKE PRODUCT INOPERABLE. NO SAFETY FACTOR HAS BEEN APPLIED IT IS RECOMMENDED THAT THE USER REQUEST A PRODUCT SAMPLE FOR TESTING TO DETERMINE THE SUITABILITY OF THE PRODUCT FOR THE PURPOSE INTENDED AND USER'S PARTICULAR APPLICATION.

southco

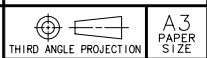
PROPRIETARY ITEM - EXCEPT FOR USES EXPRESSLY GRANTED IN WRITING INFORMATION DISCLOSED HEREON IS CONFIDENTIAL AND ALL RIGHTS PATENT AND OTHERWISE ARE RESERVED BY SOUTHCO, INC.

P9 FOLDING (INFINITE POSITION) HANDLES

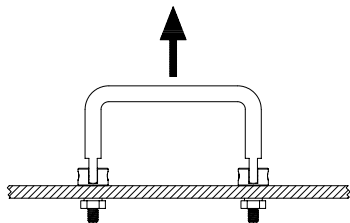
DATE	DRAWN	CHKD	SCALE
17SEP2005	DLH	SP	.5:1

DRAWING NUMBER
TD-P9-J

REV	DATE	DRAWN/CHKD	DESCRIPTION
A	22SEP2005	DLH/SP	RELEASED FOR PRODUCTION

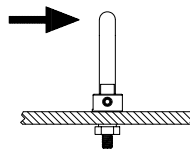


EXTERNAL THREADS



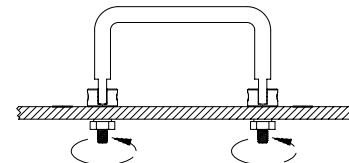
STRAIGHT PULL

- MAXIMUM STATIC LOAD: 400 N (90 lbf)
 ① AVERAGE ULTIMATE LOAD: 1390 N (310 lbf)



SIDE LOAD

- MAXIMUM STATIC LOAD: 130 N (30 lbf)
 ② AVERAGE ULTIMATE LOAD: 400 N (90 lbf)

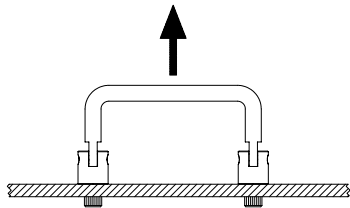


HEX NUT TORQUE

- RECOMMENDED MAXIMUM TIGHTEN TORQUE: 110 N·cm (10 lbf·in)
 ③ AVERAGE ULTIMATE TIGHTEN TORQUE: 200 N·cm (18 lbf·in)

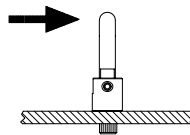
NOTE: HANDLES MOUNTED USING M4 OR 8-32 STEEL HEX NUTS.

INTERNAL THREADS



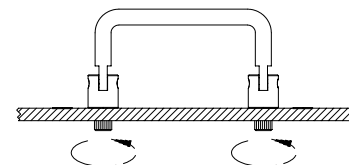
STRAIGHT PULL

- MAXIMUM STATIC LOAD: 600 N (135 lbf)
 ① AVERAGE ULTIMATE LOAD: 2000 N (450 lbf)



SIDE LOAD

- MAXIMUM STATIC LOAD: 170 N (40 lbf)
 ② AVERAGE ULTIMATE LOAD: 500 N (110 lbf)



SCREW TORQUE

- RECOMMENDED MAXIMUM TIGHTEN TORQUE: 170 N·cm (15 lbf·in)
 ③ AVERAGE ULTIMATE TIGHTEN TORQUE: 550 N·cm (50 lbf·in)

NOTE: HANDLES MOUNTED USING M4 OR 8-32 STAINLESS STEEL SCREWS.

- FAILURE METHODS:
 ① - HANDLE DEFORMS AND THEN BREAKS.
 ② - HANDLE DEFORMS AND THEN BREAKS.
 ③ - EXTERNAL: THREADED STUDS BREAK.
 INTERNAL: SCREWS BREAK.

CYCLE TEST: HANDLES WERE CYCLED 1000 TIMES WITH NO LOSS OF FUNCTION.