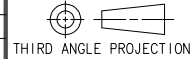


REV	DATE	DRAWN/CHKD	DESCRIPTION
A	09APR2002	GDM	UPDATE FORMAT

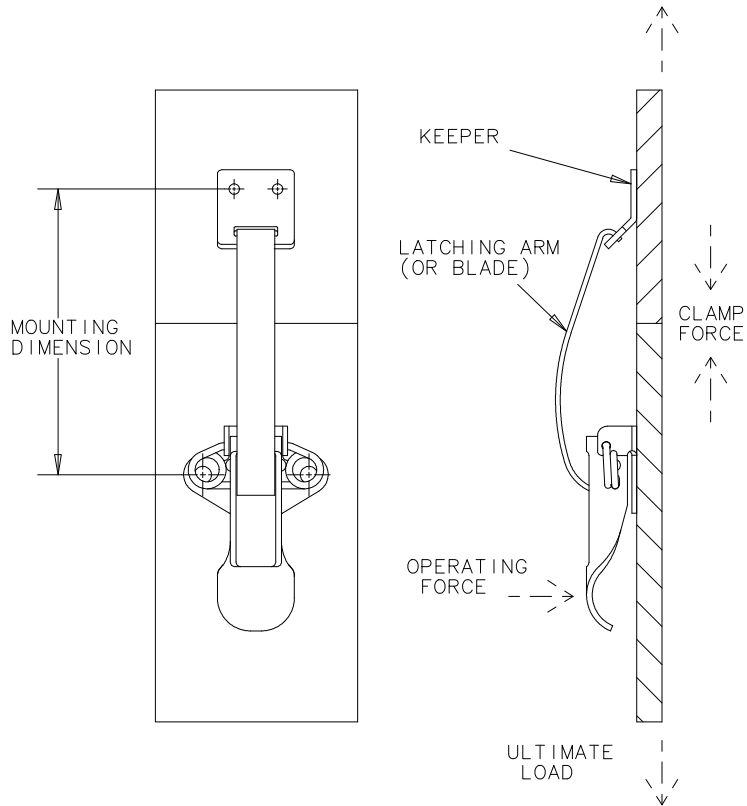


THIRD ANGLE PROJECTION

A4 PAPER SIZE

SOUTHCO PERFORMANCE GUIDELINES

THE PERFORMANCE GUIDELINES SHOWN ON THIS PAGE ARE SUPPLIED AS A GENERAL GUIDE ONLY, AS CONDITIONS VARY WITH EACH APPLICATION AND METHOD OF INSTALLATION. STRENGTH DATA GIVEN IS FOR FAILURE OF THE PRODUCT OR FOR SUFFICIENT DEFORMATION TO MAKE PRODUCT INOPERABLE. NO SAFETY FACTOR HAS BEEN APPLIED. IT IS RECOMMENDED THAT THE USER REQUEST A PRODUCT SAMPLE FOR TESTING TO DETERMINE THE SUITABILITY OF THE PRODUCT FOR THE PURPOSE INTENDED AND USER'S PARTICULAR APPLICATION.



PART NUMBERS	MOUNTING DIMENSION	AVERAGE CLAMP FORCE(A)	AVERAGE OPERATING FORCE(B)	AVERAGE ULTIMATE LOAD(C)	AVERAGE WORKING LOAD (D)
	mm (inch)	N (lbf)	N (lbf)	N (lbf)	N (lbf)
V3-0072-07	96.7 (3.80)	122 (27)	8.8 (2)	1015 (228)	630 N (142)
(WITH V2-0018-07 KEEPER)	99.0 (3.90)	235 (53)	24 (5.4)		[SIGMA =] 72 (16)

- A) CLAMP FORCE IS THE FORCE EXERTED ON THE MOUNTING PANELS BY THE LATCH AND KEEPER.
- B) OPERATING FORCE IS THE FORCE, PERPENDICULAR TO THE MOUNTING SURFACE, REQUIRED TO FULLY CLOSE THE LATCH.
- C) ULTIMATE LOAD IS THE FORCE WHICH CAUSES DEFORMATION OF THE LATCHING ARM, RESULTING IN FAILURE OF THE ASSEMBLY.
- D) WORKING LOAD IS THE MAXIMUM LOAD AT WHICH THE PRODUCT CONTINUES TO FUNCTION PROPERLY.