



# 82 DZUS® Performance Quarter-Turn Fasteners Studs

82

## Material and Finish

Studs: Steel, zinc plated and chromate or stainless steel  
Bail cover: ABS, black

85

## Accessories

Tool head recess key:  
Part number: 29-90-214-10

D8

D9

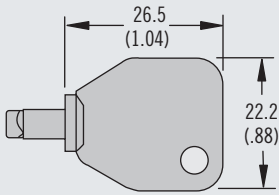
D1

D4

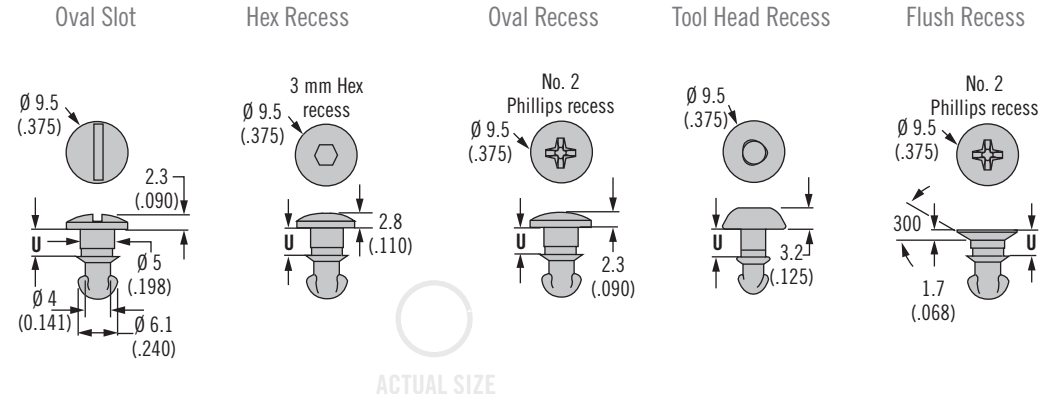
D5

D7

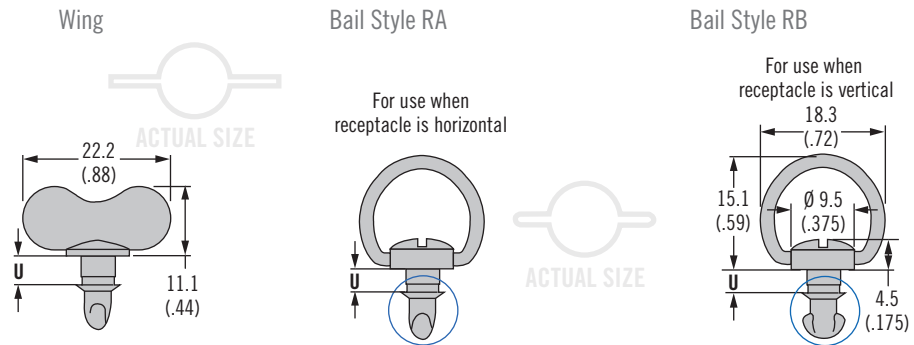
NY



## H Head Styles - Tool Actuated



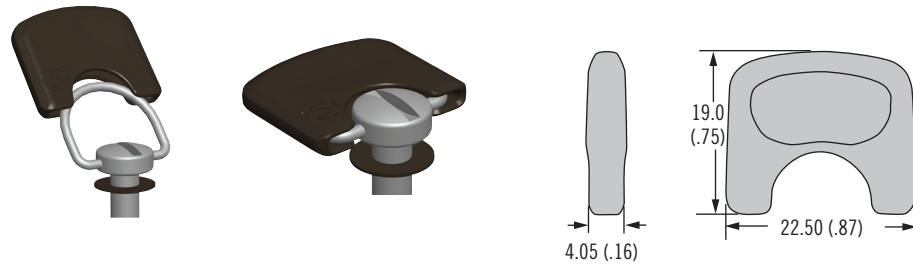
## H Head Styles - Hand Actuated



## Installation Notes

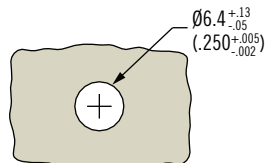
Bail cover:  
A retainer must be fitted under the stud head to fit flush with surface  
Retainer part number 82-32-301-12 (see page 443)

## Optional Bail Cover



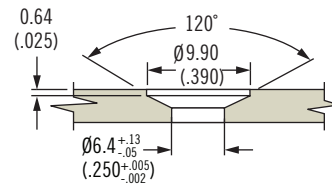
Bail Cover Part Number
82-2-B-000

## Stud Panel Preparation



## Flush Head Styles

(when outer panel is 1.3 (.050) or greater)

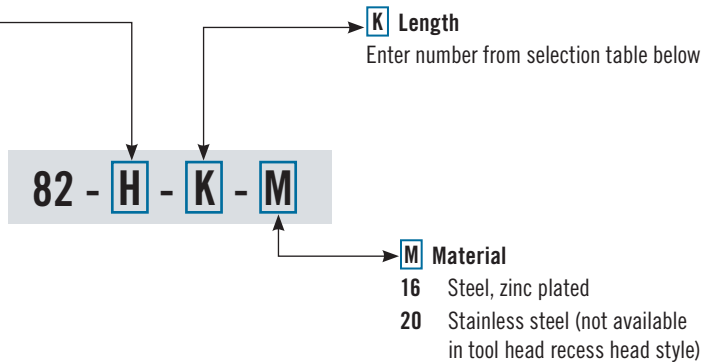


# 82 DZUS® Lion Quarter-Turn Fasteners

## Stud selection



- H** Head style
- 11 Oval slot
  - 12 Wing head
  - 15 Bail RA
  - 16 Bail RB
  - 19 Oval Phillips recess
  - 28 Flush Phillips recess
  - 78 Hex recess
  - T Tool head recess  
(not available in stainless steel)



### Part Number Selection

- 82
- 85
- D8
- D9
- D1
- D4
- D5
- D7
- NY

#### To select correct fastener:

##### 1. Select receptacle

Choose a receptacle from pages 438-442

##### 2. Select retainer and accessories

from page 443 and note any adjustment values

##### 3. Specify stud length

Calculate the total material thickness (TMT) using the formula given for the receptacle selected. Find the range of TMT using the stud length selection table (left) using the column (A, B, C, or D) given for the receptacle selected, find **K**

##### 4. Complete the stud part number

by specifying the head style **H**, stud length **K**, and material **M**

Example:

For rivet-on with base receptacle 82-35-302-15 use column D

For TMT value calculated as 5.2 (.206), K = 200

For slotted head style in steel material, completed part number: 82-11-200-16

A complete example can be found on page 435

#### Notes

Stainless steel material may require a higher minimum order quantity. Contact Southco for details.

Stud Length Table									
A		B		C		D		K	U
TMT Range For: 82-35-306-10		TMT Range For: 82-35-308-55 82-35-310-55		TMT Range For: 82-35-315-55		TMT Range For: All Other Receptacles			
Min.	Max.	Min.	Max.	Min.	Max.	Min.	Max.		
0.7 (.026)	1.2 (.045)	~	~	~	~	2.3 (.090)	2.8 (.110)	100	3.2 (.127)
1.2 (.045)	1.7 (.065)	~	~	~	~	2.8 (.110)	3.3 (.130)	120	3.7 (.147)
1.7 (.065)	2.2 (.085)	~	~	~	~	3.3 (.130)	3.8 (.150)	140	4.2 (.167)
2.2 (.085)	2.7 (.105)	0 (0)	0.5 (.019)	1.3 (.050)	1.8 (.070)	3.8 (.150)	4.3 (.170)	160	4.7 (.187)
2.7 (.105)	3.2 (.125)	0.5 (.019)	1 (.039)	1.8 (.070)	2.3 (.090)	4.3 (.170)	4.8 (.190)	180	5.3 (.207)
3.2 (.125)	3.7 (.145)	1 (.039)	1.5 (.059)	2.3 (.090)	2.8 (.110)	4.8 (.190)	5.3 (.210)	200	5.8 (.227)
3.7 (.145)	4.2 (.165)	1.5 (.059)	2 (.079)	2.8 (.110)	3.3 (.130)	5.3 (.210)	5.8 (.230)	220	6.3 (.247)
4.2 (.165)	4.7 (.185)	2 (.079)	2.5 (.099)	3.3 (.130)	3.8 (.150)	5.8 (.230)	6.3 (.250)	240	6.8 (.267)
4.7 (.185)	5.2 (.205)	2.5 (.099)	3 (.119)	3.8 (.150)	4.3 (.170)	6.4 (.250)	6.9 (.270)	260	7.3 (.287)
5.2 (.205)	5.7 (.225)	3 (.119)	3.5 (.139)	4.3 (.170)	4.8 (.190)	6.9 (.270)	7.4 (.290)	280	7.8 (.307)
5.7 (.225)	6.2 (.245)	3.5 (.139)	4.1 (.159)	4.8 (.190)	5.3 (.210)	7.4 (.290)	7.9 (.310)	300	8.3 (.327)
~	~	4.1 (.159)	4.6 (.179)	5.3 (.210)	5.8 (.230)	7.9 (.310)	8.4 (.330)	320	8.8 (.347)
~	~	4.6 (.179)	5.1 (.199)	5.8 (.230)	6.3 (.250)	8.4 (.330)	8.9 (.350)	340	9.3 (.367)
~	~	5.1 (.199)	5.6 (.219)	6.3 (.250)	6.8 (.270)	8.9 (.350)	9.4 (.370)	360	9.8 (.387)
~	~	5.6 (.219)	6.1 (.239)	6.8 (.270)	7.3 (.290)	9.4 (.370)	9.9 (.390)	380	10.3 (.407)
~	~	6.1 (.239)	6.6 (.259)	7.3 (.290)	7.8 (.310)	9.9 (.390)	10.4 (.410)	400	10.8 (.427)
~	~	6.6 (.259)	7.1 (.279)	7.8 (.310)	8.3 (.330)	10.4 (.410)	10.9 (.430)	420	11.4 (.447)
~	~	7.1 (.279)	7.6 (.299)	8.3 (.330)	8.8 (.350)	10.9 (.430)	11.4 (.450)	440	11.9 (.467)
~	~	7.6 (.299)	8.1 (.319)	8.8 (.350)	9.3 (.370)	11.4 (.450)	11.9 (.470)	460	12.4 (.487)
~	~	8.1 (.319)	8.6 (.339)	9.3 (.370)	9.8 (.390)	11.9 (.470)	12.4 (.490)	480	12.9 (.507)
~	~	8.6 (.339)	9.1 (.359)	9.8 (.390)	10.3 (.410)	12.5 (.490)	12.9 (.510)	500	13.4 (.527)
~	~	9.1 (.359)	9.6 (.379)	10.3 (.410)	10.8 (.430)	13 (.510)	13.5 (.530)	520	13.9 (.547)
~	~	9.6 (.379)	10.1 (.399)	10.8 (.430)	11.3 (.450)	13.5 (.530)	14 (.550)	540	14.4 (.567)
~	~	10.1 (.399)	10.6 (.419)	11.3 (.450)	11.8 (.470)	14 (.550)	14.5 (.570)	560	14.9 (.587)
~	~	10.6 (.419)	11.1 (.439)	11.8 (.470)	12.3 (.490)	14.5 (.570)	15 (.590)	580	15.4 (.607)



## 82 DZUS<sup>®</sup> Lion Quarter-Turn Fasteners Receptacles

### Material and Finish

Steel, zinc immersion coating

### Installation Notes

Install with  $\varnothing$  2.5 (3/32) rivets, spring plate must float freely after riveting

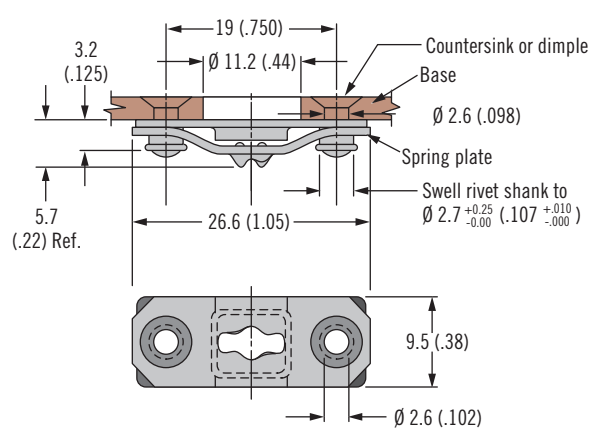
### Part Number

See table

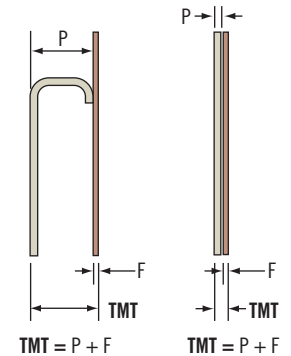
### Notes

Utilize stud selection column indicated when choosing a stud length from the stud length table on page 437

### Rivet-On With Base



ACTUAL SIZE



Part Number	Stud Selection Column
82-35-302-15	D

### Material and Finish

Steel, zinc immersion coating or stainless steel

### Installation Notes

Install with  $\varnothing$  2.5 (3/32) rivets, spring plate must float freely after riveting

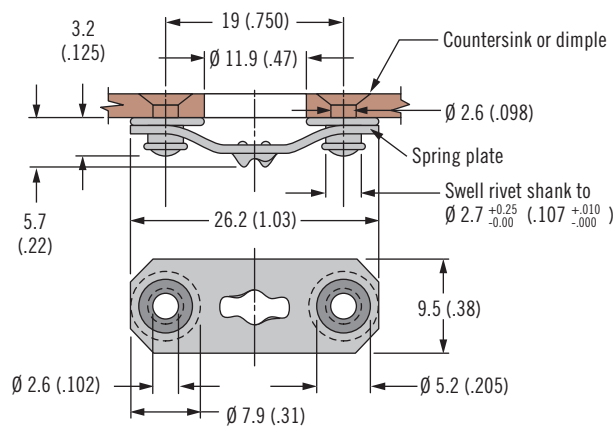
### Part Number

See table

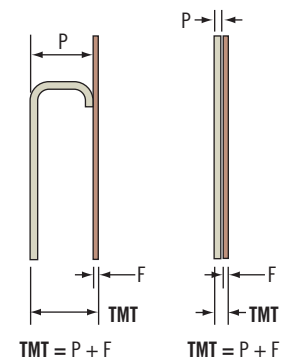
### Notes

Utilize stud selection column indicated when choosing a stud length from the stud length table on page 437

### Rivet-On Without Base



ACTUAL SIZE

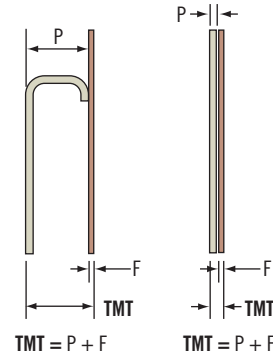
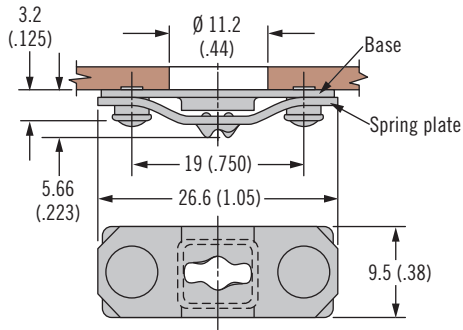


Material	Part Number	Stud Selection Column
Steel	82-35-295-15	D
Stainless steel	82-35-295-20	

# 82 DZUS® Lion Quarter-Turn Fasteners Receptacles



## Weld-On



ACTUAL SIZE

Part Number	Stud Selection Column
82-35-303-15	D

## Material and Finish

Steel, zinc immersion coating

## Installation Notes

Spring plate must float freely after welding

## Part Number

See table

## Notes

Utilize stud selection column indicated when choosing a stud length from the stud length table on page 437

82

85

D8

D9

D1

D4

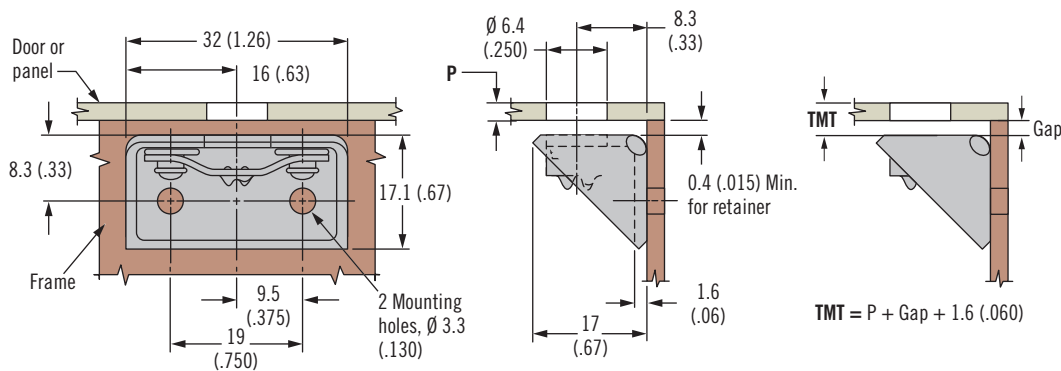
D5

D7

NY



## Side Mount



ACTUAL SIZE

Part Number	Stud Selection Column
82-45-101-15	D

## Material and Finish

Steel, zinc immersion coating

## Installation Notes

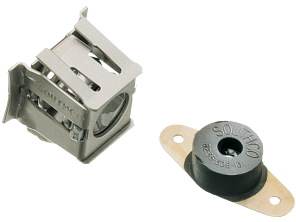
Install with Ø 2.5 (3/32) rivets

## Part Number

See table

## Notes

Utilize stud selection column indicated when choosing a stud length from the stud length table on page 437



## 82 DZUS<sup>®</sup> Lion Quarter-Turn Fasteners Receptacles

### Material and Finish

Steel, zinc plated and neoprene

### Installation Notes

Install with  $\varnothing$  2.5 (3/32) rivets

82

85

D8

D9

D1

D4

D5

D7

NY

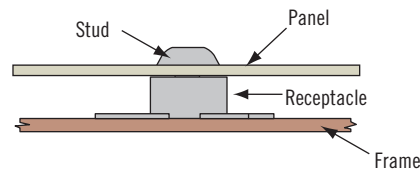
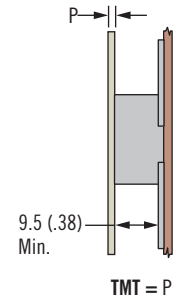
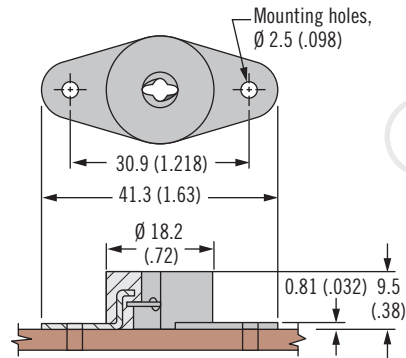
### Part Number

See table

### Notes

Utilize stud selection column indicated when choosing a stud length from the stud length table on page 437

### Vibration Isolating



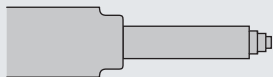
Part Number	Stud Selection Column
82-35-306-10	A

### Material and Finish

Steel, zinc plated and stainless steel

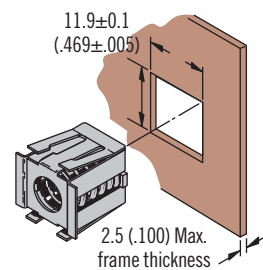
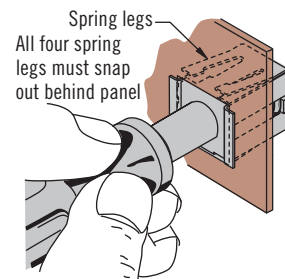
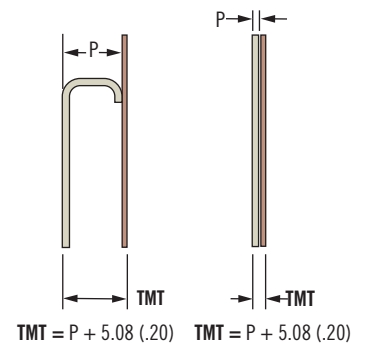
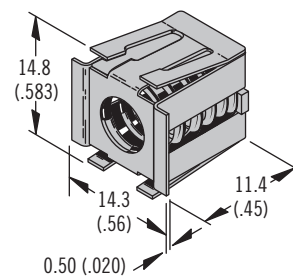
### Installation Notes

Installation Tool



Part Number: 29-8125-309

### Snap-In - Front Mount



### Part Number

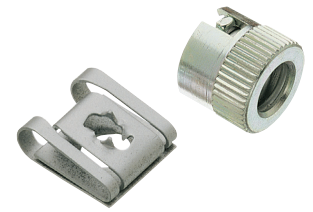
See table

### Notes

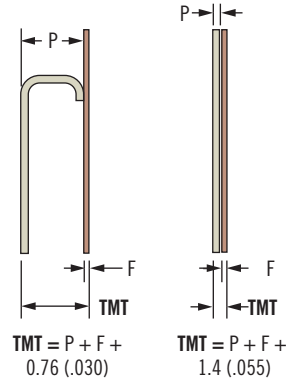
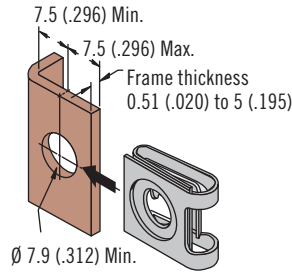
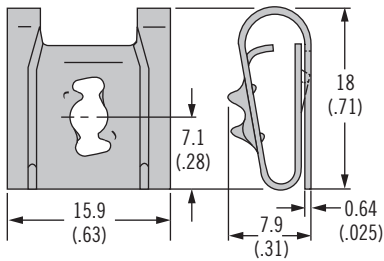
Utilize stud selection column indicated when choosing a stud length from the stud length table on page 437

Part Number	Stud Selection Column
82-35-309-56	D

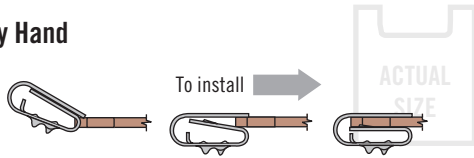
# 82 DZUS® Lion Quarter-Turn Fasteners Receptacles



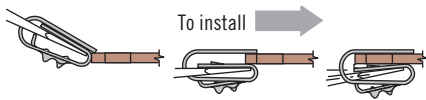
## Clip-On



## By Hand



## With Screwdriver



Material	Part Number	Stud Selection Column
Steel	82-47-113-15	D
Stainless steel	82-47-113-20	

## Material and Finish

Steel, zinc immersion coating or stainless steel

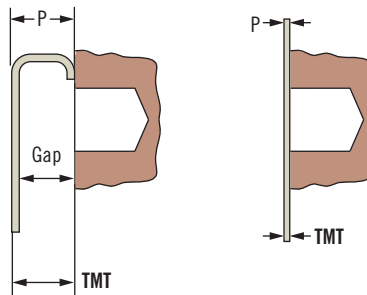
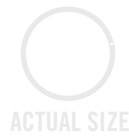
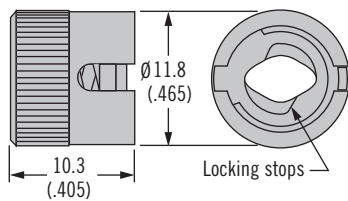
## Part Number

See table

## Notes

Utilize stud selection column indicated when choosing a stud length from the stud length table on page 437

## Press-In

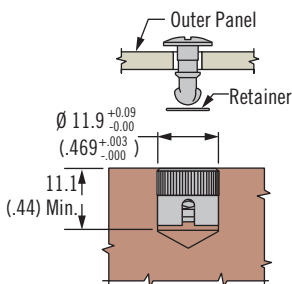


$$TMT = P + \text{Gap} - 0.5 (.020)$$

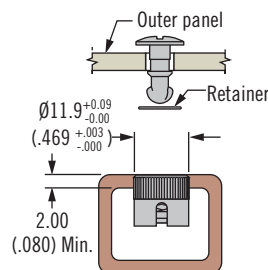
(when gap is > retainer thickness)

$$TMT = P + (\text{Retainer adjustment value}) - 0.5 (.020)$$

## Solid Install



## Blind Install



Part Number	Stud Selection Column
82-35-308-55	B

## Material and Finish

Steel, zinc plated and stainless steel

## Installation Notes

Press receptacle flush to frame

## Notes

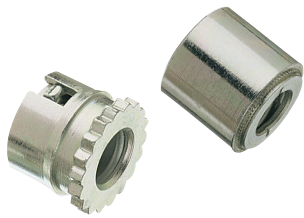
Receptacle shown installed flush to the frame. To eliminate the gap between the frame and outer panel, install to a depth  $\geq$  the thickness of the selected retainer. This depth should be added to the TMT.

## Part Number

See table

## Notes

Utilize stud selection column indicated when choosing a stud length from the stud length table on page 437



# 82 DZUS® Lion Quarter-Turn Fasteners

## Receptacles · Self-clinching

### Material and Finish

Steel, zinc plated and stainless steel

82

### Installation Notes

Press receptacle flush to frame

85

### Notes

Receptacle shown installed flush to the frame. To eliminate the gap between the frame and outer panel, install to a depth  $\geq$  the thickness of the selected retainer. This depth should be added to the TMT.

D8

D9

D1

D4

D5

### Part Number

See table

D7

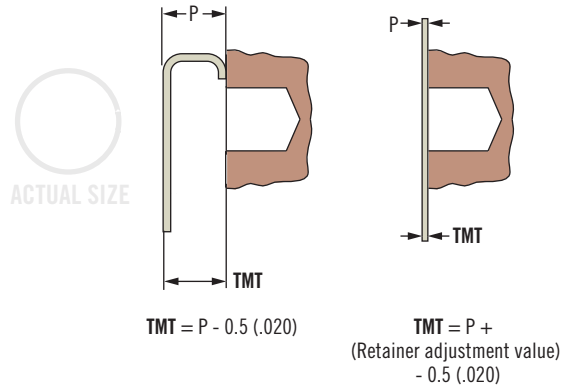
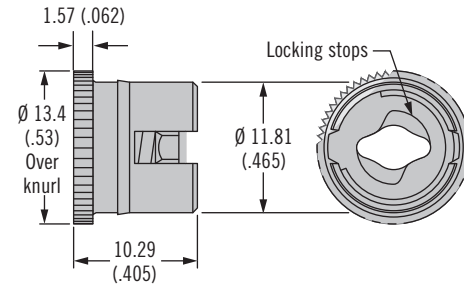
NY

### Notes

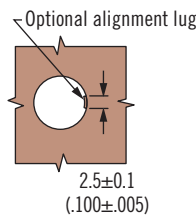
Utilize stud selection column indicated when choosing a stud length from the stud length table on page 437



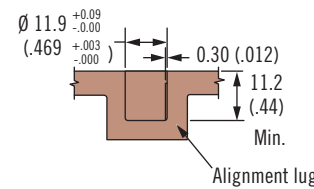
### Ultrasonic For Thermoplastics



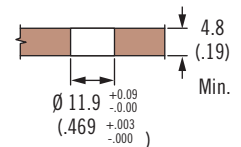
### Installation



### Blind Hole Installation



### Thru Hole Installation



Part Number	Stud Selection Column
82-35-310-55	B

### Material and Finish

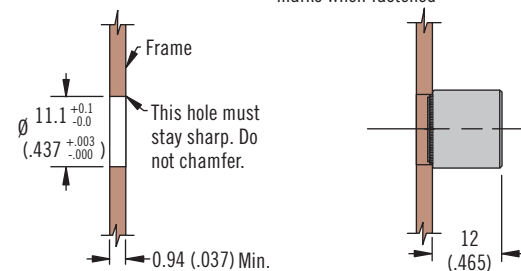
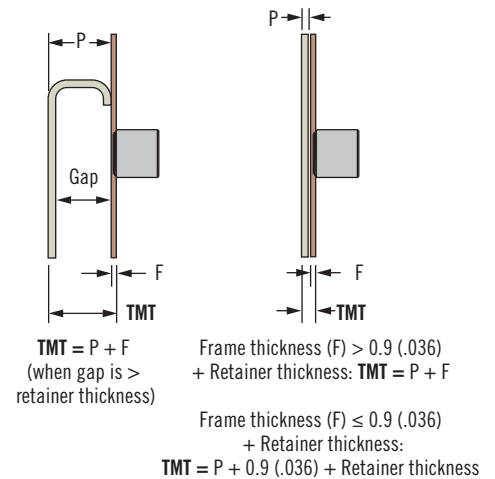
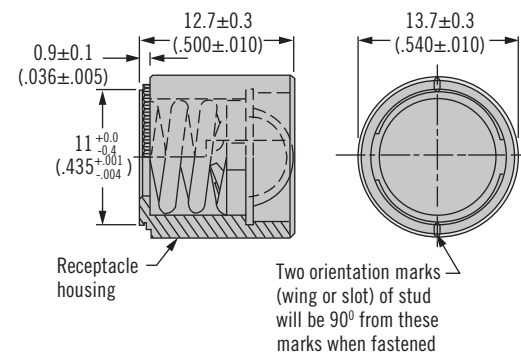
Steel, zinc plated and stainless steel

### Installation Notes

For use in low carbon steels, aluminum and stainless steels in the annealed condition that are RB85 or softer

See page 627 for installation guidelines

### Shielded – Self-Clinching



### Part Number

See table

### Notes

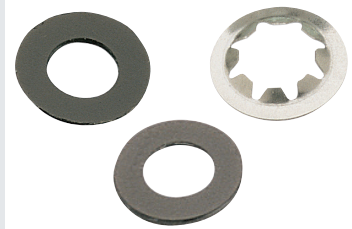
Utilize stud selection column indicated when choosing a stud length from the stud length table on page 437

Part Number	Stud Selection Column
82-35-315-55	C

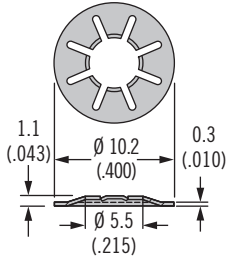


# 82 DZUS® Lion Quarter-Turn Fasteners

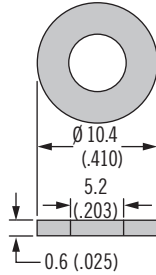
## Retainers · Accessories



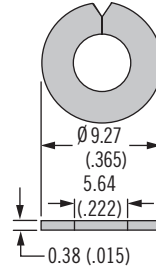
### Retainer Push-On



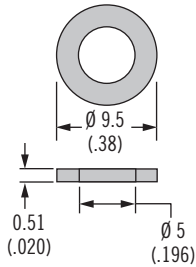
### Retainer Push-On Plastic



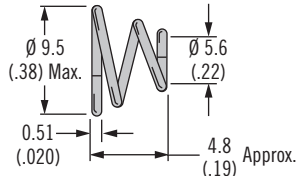
### Retainer Split



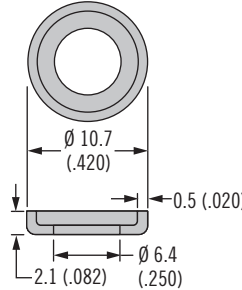
### Sealing Washer



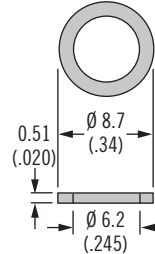
### Ejector Spring



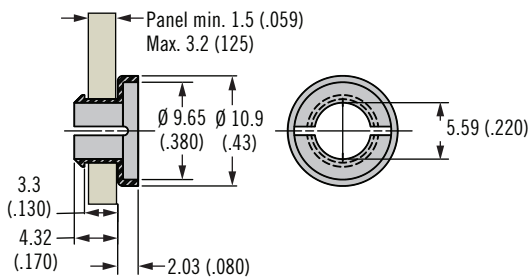
### Cupped Washer



### Flat Wear Washer



### Snap-In Retainer

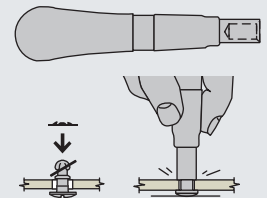


### Material and Finish

See table

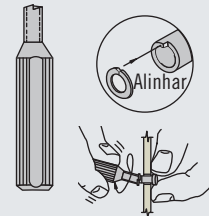
### Installation Notes

For standard retainers:



Part Number: 82-0-22542-11

For split retainers:



Part Number: 82-0-7595-11

### Notes

For snap-in retainer:

Min. stud **K** = 180 when using snap-in retainer (see page 437 for **K** reference).

Install stud into retainer before inserting into panel

Type	Part Number	Material	Adjustment Value
Push-on retainer	82-32-201-20	Stainless steel	Add 0.25 (.010)
Push-on plastic retainer	82-32-301-12	Nylon, black	Add 0.64 (.025)
Split retainer	82-32-101-20	Stainless steel	Add 0.38 (.015)
Sealing washer	82-43-201-38	Neoprene nitrile rubber, black	Add 0.51 (.020)
Ejector spring	43-13-1-24	Stainless steel	Add 0.51 (.020)
Cupped washer	82-46-101-39	Nylon, white	Add 0.51 (.020)
	82-46-101-41	Nylon, black	
Flat wear washer	82-46-103-39	Nylon, white	Add 0.51 (.020)
Snap-in retainer	82-32-401-41	Nylon, black	Add 0.51 (.020)

### Part Number

See table

### Notes

#### Adjustment value:

When using accessories the components increase TMT

Add the adjustment value to your outer panel thickness (P) when calculating TMT (see page 435 for example)





# 85 DZUS® Lion Quarter-Turn Fasteners Studs

## Material and Finish

Studs: Steel, zinc plated or stainless steel

Bail cover: ABS, black

82

85

D8

D9

D1

D4

D5

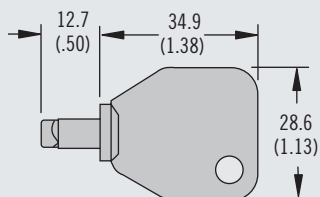
D7

NY

## Accessories

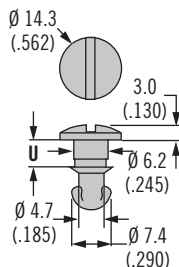
Tool head recess key:

Part number: 29-90-215-10

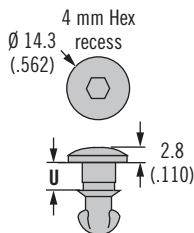


## H Head Styles - Tool Actuated

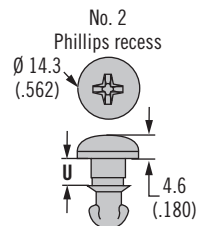
Oval Slot



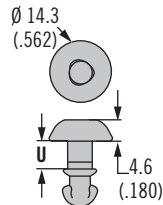
Hex Recess



Phillips Recess

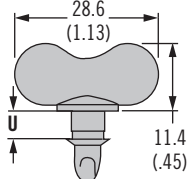


Tool Head Recess



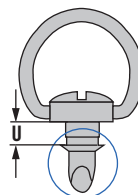
## H Head Styles - Hand Actuated

Wing



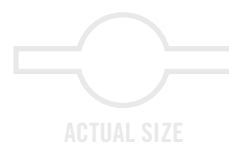
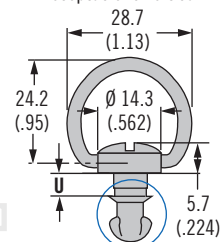
Bail Style RA

For use when receptacle is horizontal



Bail Style RB

For use when receptacle is vertical



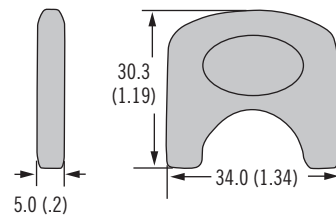
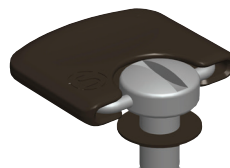
## Installation Notes

Bail cover:

A wear washer must be fitted under the stud head to fit flush with surface

Wear washer part number 85-34-301-12 (see page 449)

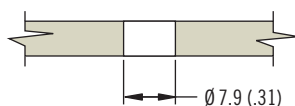
## Optional Bail Cover



Bail Cover Part Number
85-5-B-000

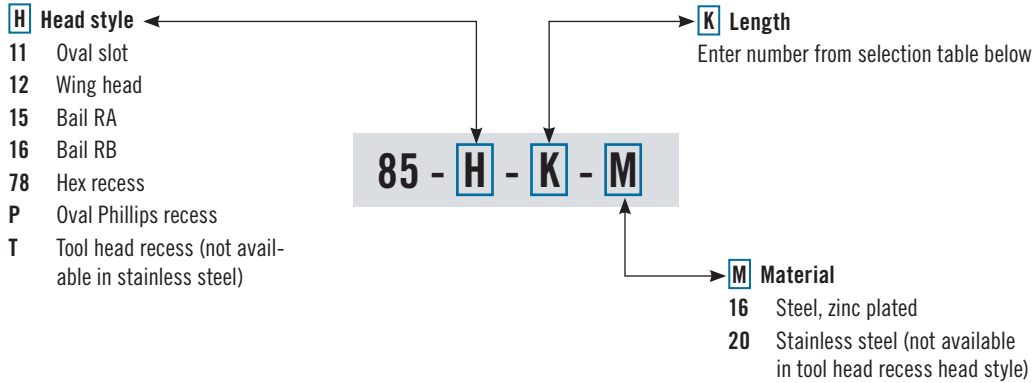
## Stud Panel Preparation

Prepare Hole



# 85 DZUS® Lion Quarter-Turn Fasteners

## Stud selection



Stud Length Table							
A		B		C		K	U
TMT Range For: 85-35-308-55		TMT Range For: 85-35-311-55		TMT Range For: All other receptacles			
Min.	Max.	Min.	Max.	Min.	Max.		
~	~	~	~	2.3 (.090)	2.8 (.110)	100	5.2 (.205)
~	~	~	~	2.8 (.110)	3.3 (.130)	120	5.7 (.225)
~	~	~	~	3.3 (.130)	3.8 (.150)	140	6.2 (.245)
~	~	~	~	3.8 (.150)	4.3 (.170)	160	6.7 (.265)
~	~	~	~	4.3 (.170)	4.8 (.190)	180	7.2 (.285)
~	~	~	~	4.8 (.190)	5.3 (.210)	200	7.7 (.305)
~	~	~	~	5.3 (.210)	5.8 (.230)	220	8.3 (.325)
~	~	1.3 (.050)	1.8 (.070)	5.8 (.230)	6.3 (.250)	240	8.8 (.345)
0.4 (.015)	0.9 (.035)	1.8 (.070)	2.3 (.090)	6.4 (.250)	6.9 (.270)	260	9.3 (.365)
0.9 (.035)	1.4 (.055)	2.3 (.090)	2.8 (.110)	6.9 (.270)	7.4 (.290)	280	9.8 (.385)
1.4 (.055)	1.9 (.075)	2.8 (.110)	3.3 (.130)	7.4 (.290)	7.9 (.310)	300	10.3 (.405)
1.9 (.075)	2.4 (.095)	3.3 (.130)	3.8 (.150)	7.9 (.310)	8.4 (.330)	320	10.8 (.425)
2.4 (.095)	2.9 (.115)	3.8 (.150)	4.3 (.170)	8.4 (.330)	8.9 (.350)	340	11.3 (.445)
2.9 (.115)	3.4 (.135)	4.3 (.170)	4.8 (.190)	8.9 (.350)	9.4 (.370)	360	11.8 (.465)
3.4 (.135)	3.9 (.155)	4.8 (.190)	5.3 (.210)	9.4 (.370)	9.9 (.390)	380	12.3 (.485)
3.9 (.155)	4.4 (.175)	5.3 (.210)	5.8 (.230)	9.9 (.390)	10.4 (.410)	400	12.8 (.505)
4.4 (.175)	4.9 (.195)	5.8 (.230)	6.3 (.250)	10.4 (.410)	10.9 (.430)	420	13.3 (.525)
5 (.195)	5.5 (.215)	6.4 (.250)	6.9 (.270)	10.9 (.430)	11.4 (.450)	440	13.8 (.545)
5.5 (.215)	6 (.235)	6.9 (.270)	7.4 (.290)	11.4 (.450)	11.9 (.470)	460	14.4 (.565)
6 (.235)	6.5 (.255)	7.4 (.290)	7.9 (.310)	11.9 (.470)	12.4 (.490)	480	14.9 (.585)
6.5 (.255)	7 (.275)	7.9 (.310)	8.4 (.330)	12.5 (.490)	12.9 (.510)	500	15.4 (.605)
7 (.275)	7.5 (.295)	8.4 (.330)	8.9 (.350)	13 (.510)	13.5 (.530)	520	15.9 (.625)
7.5 (.295)	8 (.315)	8.9 (.350)	9.4 (.370)	13.5 (.530)	14 (.550)	540	16.4 (.645)
8 (.315)	8.5 (.335)	9.4 (.370)	9.9 (.390)	14 (.550)	14.5 (.570)	560	16.9 (.665)
8.5 (.335)	9 (.355)	9.9 (.390)	10.4 (.410)	14.5 (.570)	15 (.590)	580	17.4 (.685)

### Part Number Selection

#### To select correct fastener:

##### 1. Select receptacle

Choose a receptacle from page 446-448

##### 2. Select retainer and accessories

from page 449 and note any adjustment values

##### 3. Specify stud length

Calculate the total material thickness (TMT) using the formula given for the receptacle selected. Find the range of TMT using the stud length selection table (left) using the column (A, B or C) given for the receptacle selected, find **K**

##### 4. Complete the stud part number

by specifying the head style **H**, stud length **K**, and material **M**

Example:

For rivet-on with base receptacle 85-35-295-15 use column C

For TMT value calculated as 5.2 (.206), K = 200

For slotted head style in steel material, completed part number: 85-11-200-16

A complete example can be found on page 435

#### Notes

Stainless steel material may require a higher minimum order quantity. Contact Southco for details.

- 82
- 85**
- D8
- D9
- D1
- D4
- D5
- D7
- NY



# 85 DZUS<sup>®</sup> Lion Quarter-Turn Fasteners Receptacles

## Material and Finish

Steel, zinc immersion coating or stainless steel

82

85

D8

D9

D1

D4

D5

D7

NY

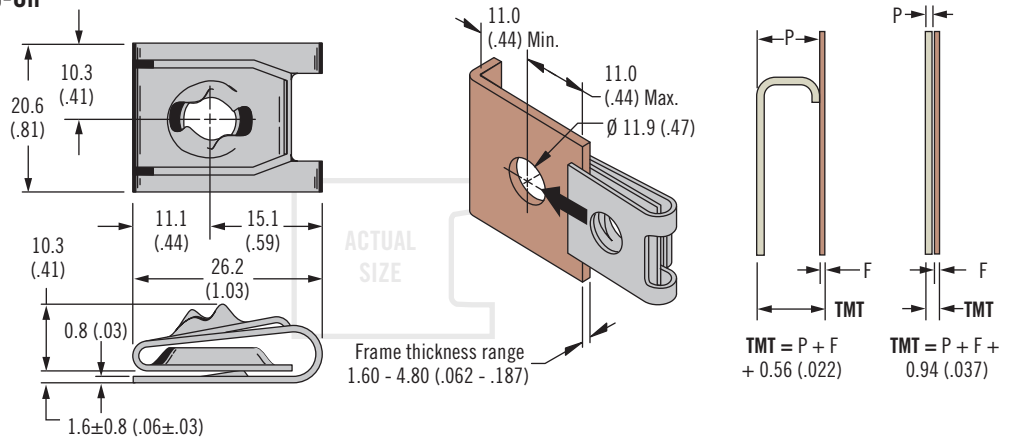
## Part Number

See table

## Notes

Utilize stud selection column indicated when choosing a stud length from the stud length table on page 445

## Clip-On



## By Hand



## With Screwdriver

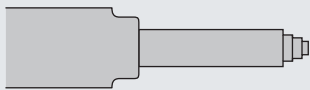


Material	Part Number	Stud Selection Column
Steel	85-47-101-15	C
Stainless steel	85-47-101-20	

## Material and Finish

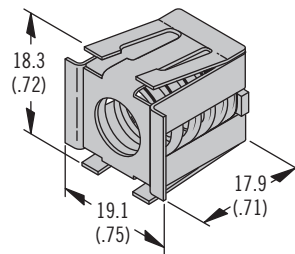
Steel, zinc plated and stainless steel

## Installation Tool

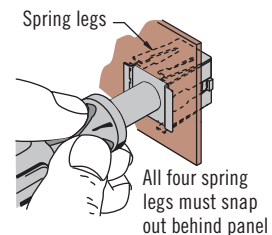
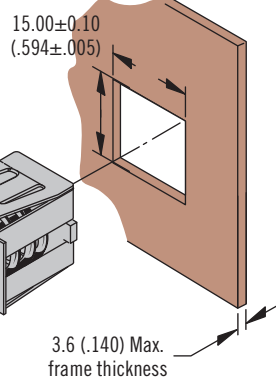
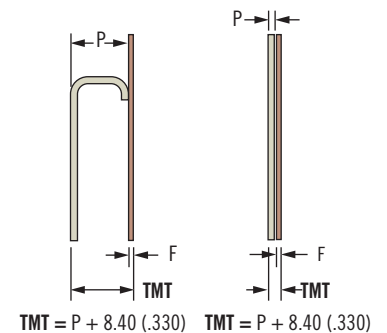


Part Number: 29-8125-309

## Snap-In – Front Mount



ACTUAL SIZE



Part Number	Stud Selection Column
85-35-309-56	C

## Part Number

See table

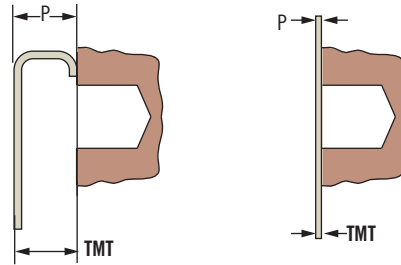
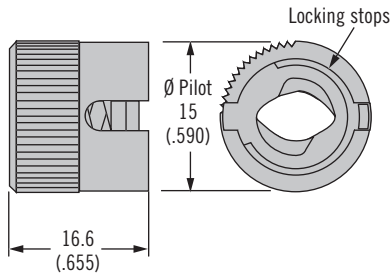
## Notes

Utilize stud selection column indicated when choosing a stud length from the stud length table on page 445

# 85 DZUS® Lion Quarter-Turn Fasteners Receptacles



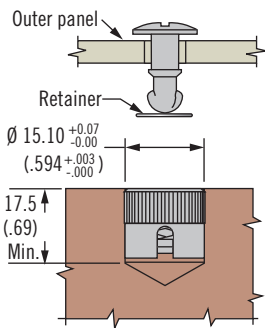
## Press-In



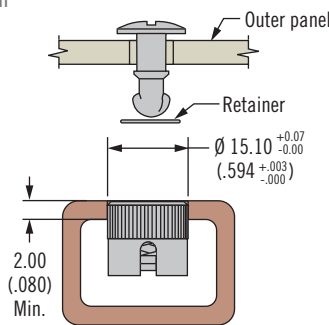
$TMT = P + \text{Gap} - 0.6 (.025)$   
(when gap is > retainer thickness)

$TMT = P +$   
(Retainer adjustment value)  
 $- 0.6 (.025)$

## Solid Install



## Blind Install



## Material and Finish

Steel, zinc plated and stainless steel

## Installation Notes

Press receptacle flush to frame

## Notes

Receptacle shown installed flush to the frame. To eliminate the gap between the frame and outer panel, install to a depth ≥ the thickness of the selected retainer. This depth should be added to the TMT.

## Part Number

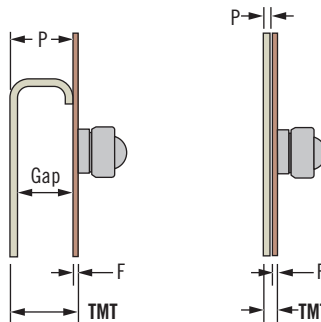
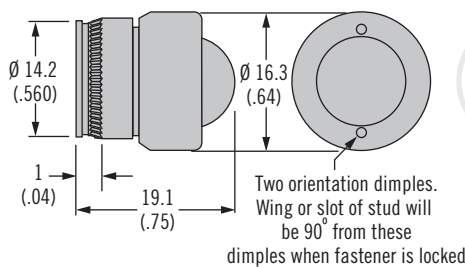
See table

## Notes

Utilize stud selection column indicated when choosing a stud length from the stud length table on page 445

Part Number	Stud Selection Column
85-35-308-55	A

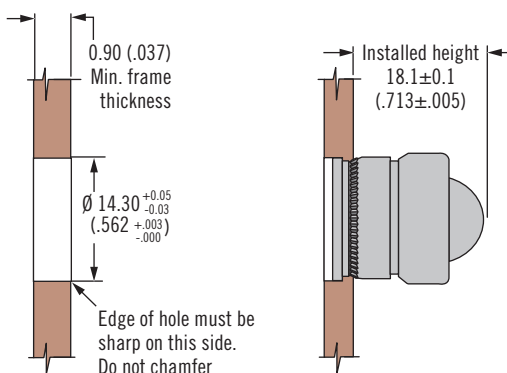
## Shielded – Self-Clinching



$TMT = P + F$   
(when gap is > retainer thickness)

Frame thickness (F) > 0.9 (.036)  
+ Retainer thickness:  $TMT = P + F$

Frame thickness (F) ≥ 0.9 (.036)  
+ Retainer thickness:  
 $TMT = P + 0.9 (.036) + \text{Retainer thickness}$



## Material and Finish

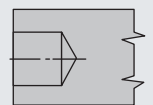
Steel, zinc plated and stainless steel

## Installation Notes

For use in low carbon steels, aluminum and stainless steels in the annealed condition that are R<sub>p</sub>85 or softer.

See page 627 for installation guidelines

## Installation Tool



Part number: 90-2825-11

## Part Number

See table

## Notes

Utilize stud selection column indicated when choosing a stud length from the stud length table on page 445

Part Number	Stud Selection Column
85-35-311-55	B



# 85 DZUS® Lion Quarter-Turn Fasteners Receptacles

## Material and Finish

Steel, zinc immersion coating or stainless steel

82

## Installation Notes

Install with  $\varnothing 3$  (.125) rivets, spring must float freely after riveting

85

D8

D9

## Part Number

See table

D1

## Notes

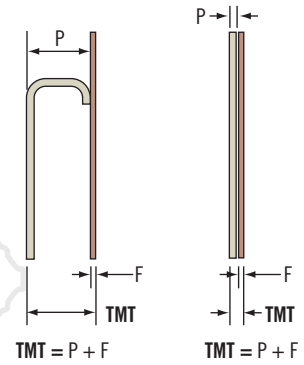
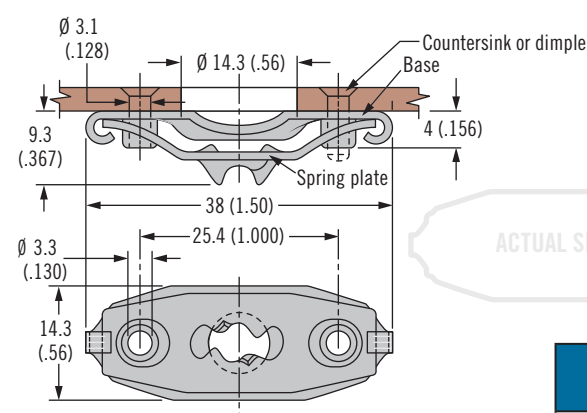
Utilize stud selection column indicated when choosing a stud length from the stud length table on page 445

D4

D5

D7

## Rivet-On With Base



Material	Part Number	Stud Selection Column
Steel	85-35-295-15	C
Stainless steel	85-35-295-20	

## Material and Finish

Steel, zinc immersion coating

NY

## Installation Notes

Spring must float freely after welding

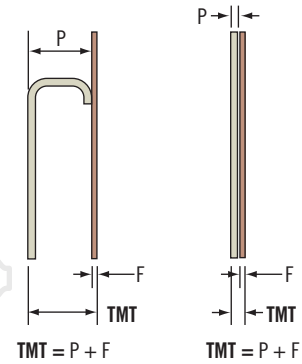
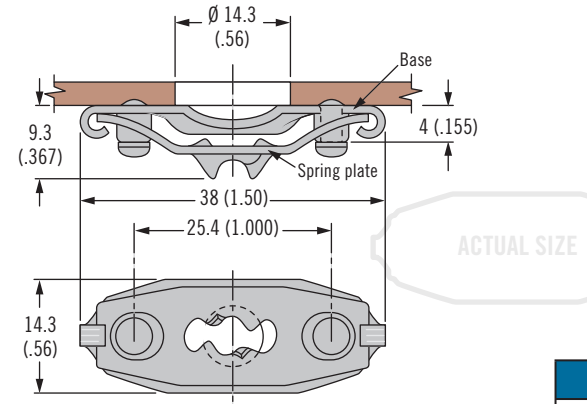
## Part Number

See table

## Notes

Utilize stud selection column indicated when choosing a stud length from the stud length table on page 445

## Weld-On



Part Number	Stud Selection Column
85-35-296-15	C

## Material and Finish

Steel, zinc immersion coating

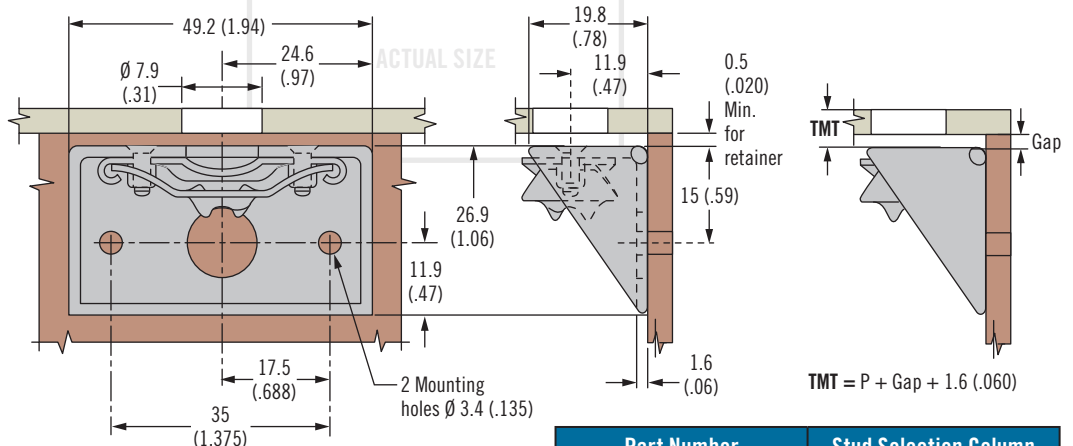
## Part Number

See table

## Notes

Utilize stud selection column indicated when choosing a stud length from the stud length table on page 445

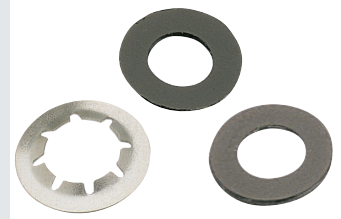
## Side Mount



Part Number	Stud Selection Column
85-45-101-15	C

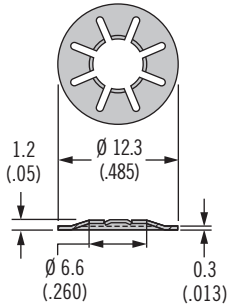
# 85 DZUS® Lion Quarter-Turn Fasteners

## Retainers · Accessories

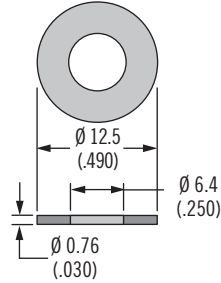


### Retainers

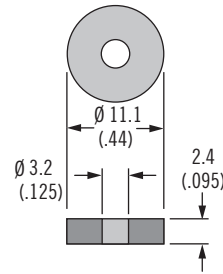
Push-On - Stainless Steel



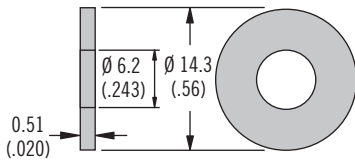
Push-On - Plastic



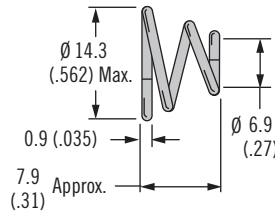
Push-On - Neoprene



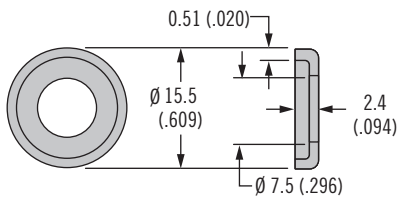
Sealing Washer



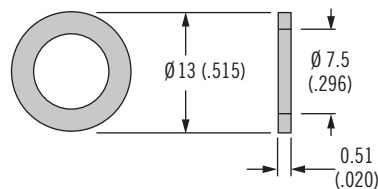
Ejector Spring



Cupped Washer



Flat Wear Washer



### Material and Finish

See table

### Installation Notes

For standard retainers use tool



Part number 85-0-22543-11

82

85

D8

D9

D1

D4

D5

D7

NY



Type	Part Number	Material	Adjustment Value
Push-on - Stainless steel	85-34-201-20	Stainless steel	Add 0.33 (.013)
Push-on - Plastic	85-34-301-12	Nylon, black	Add 0.76 (.030)
Push-on - Neoprene	85-33-101-27	Neoprene, black	Add 1.22 (.048)
Sealing washer	85-43-201-38	Neoprene nitrile rubber, black	Add 0.51 (.020)
Ejector spring	14-18-150-24	Stainless steel	Add 1.00 (.039)
Cupped washer	85-46-101-39	Nylon, white	Add 0.51 (.020)
	85-46-101-41	Nylon, black	
Flat wear washer	85-46-103-39	Nylon, white	Add 0.51 (.020)

### Part Number

See table

### Adjustment value:

When using accessories the components add thickness

Add the adjustment value to your outer panel thickness (P) when calculating TMT (see page 435 for example)